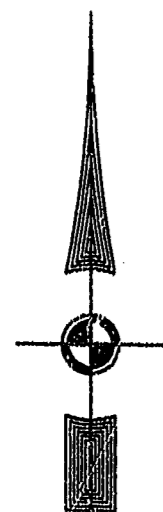


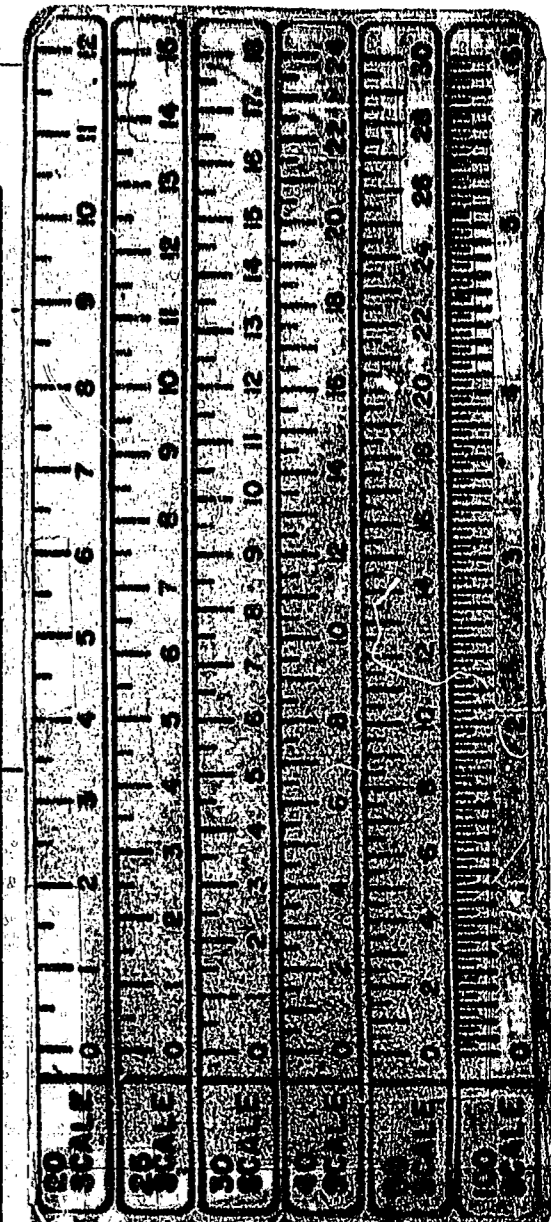
READY 1-14-99

EXIST. 20' JAMES CITY COUNTY SERVICE AUTHORITY SAN. SEWER EASEMENT AS SHOWN IN AS-BUILT LOCATION. D.B. 141 - PG. 388



MATCH LINE - SEE SHEET 5

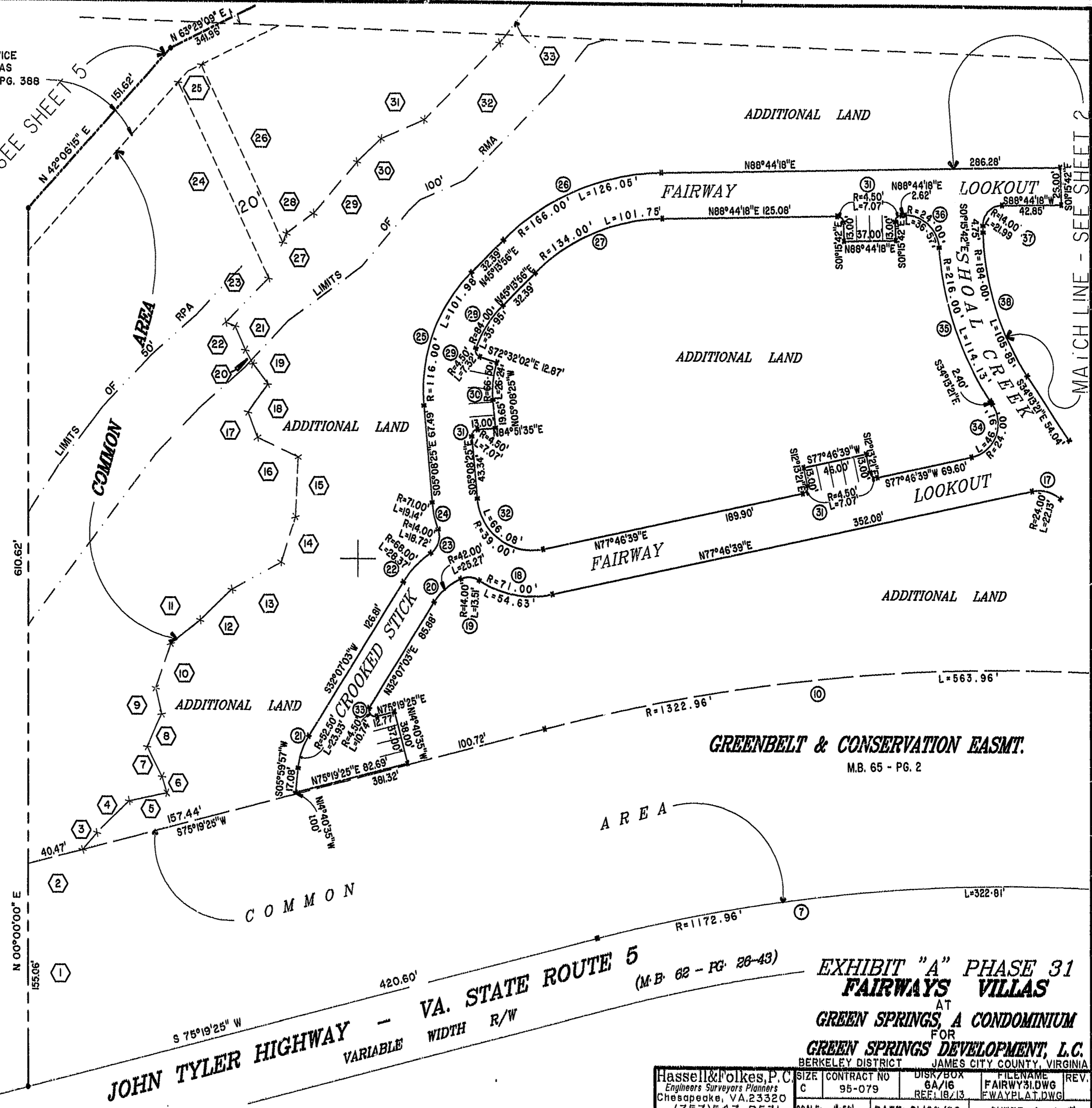
MATCH LINE - SEE SHEET 2



46-1-01-0-0001
"GREENSPRINGS PLANTATION"
(DB 322, PG 254)

Recorded 11 day of February 1999
DOCUMENT # 99000 2931 3:40 PM
Delese S. Ward Clerk

PLAT RECORDED IN
P.B. NO. 72 PAGE 1-1



JOHN TYLER HIGHWAY - VA. STATE ROUTE 5
VARIABLE WIDTH R/W

GREENBELT & CONSERVATION EASMT.
M.B. 65 - PG. 2

EXHIBIT "A" PHASE 31
FAIRWAYS VILLAS
AT
GREEN SPRINGS, A CONDOMINIUM
FOR
GREEN SPRINGS DEVELOPMENT, L.C.
BERKELEY DISTRICT JAMES CITY COUNTY, VIRGINIA

Hassell & Folkes, P.C. Engineers Surveyors Planners Chesapeake, VA. 23320 (757) 547 9531	SIZE C CONTRACT NO 95-079	DISK/BOX 8A/16 REF. 18/13	FILENAME FAIRWAY31.DWG FWAYPLAT.DWG	REV.
SCALE: 1"=50'		DATE: 01/08/99		SHEET 4 of 7