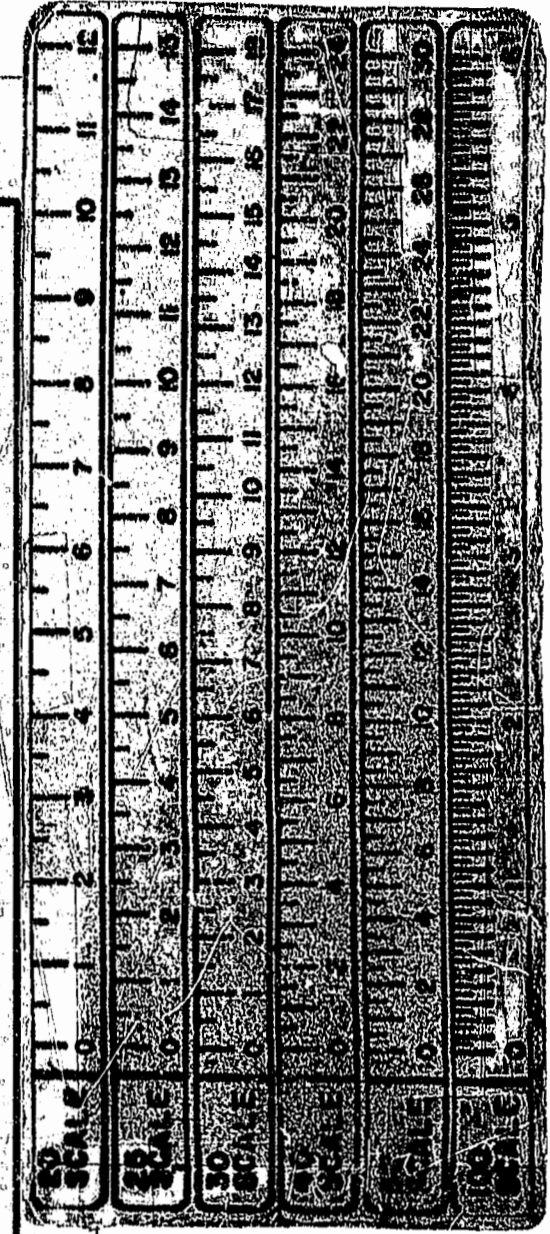
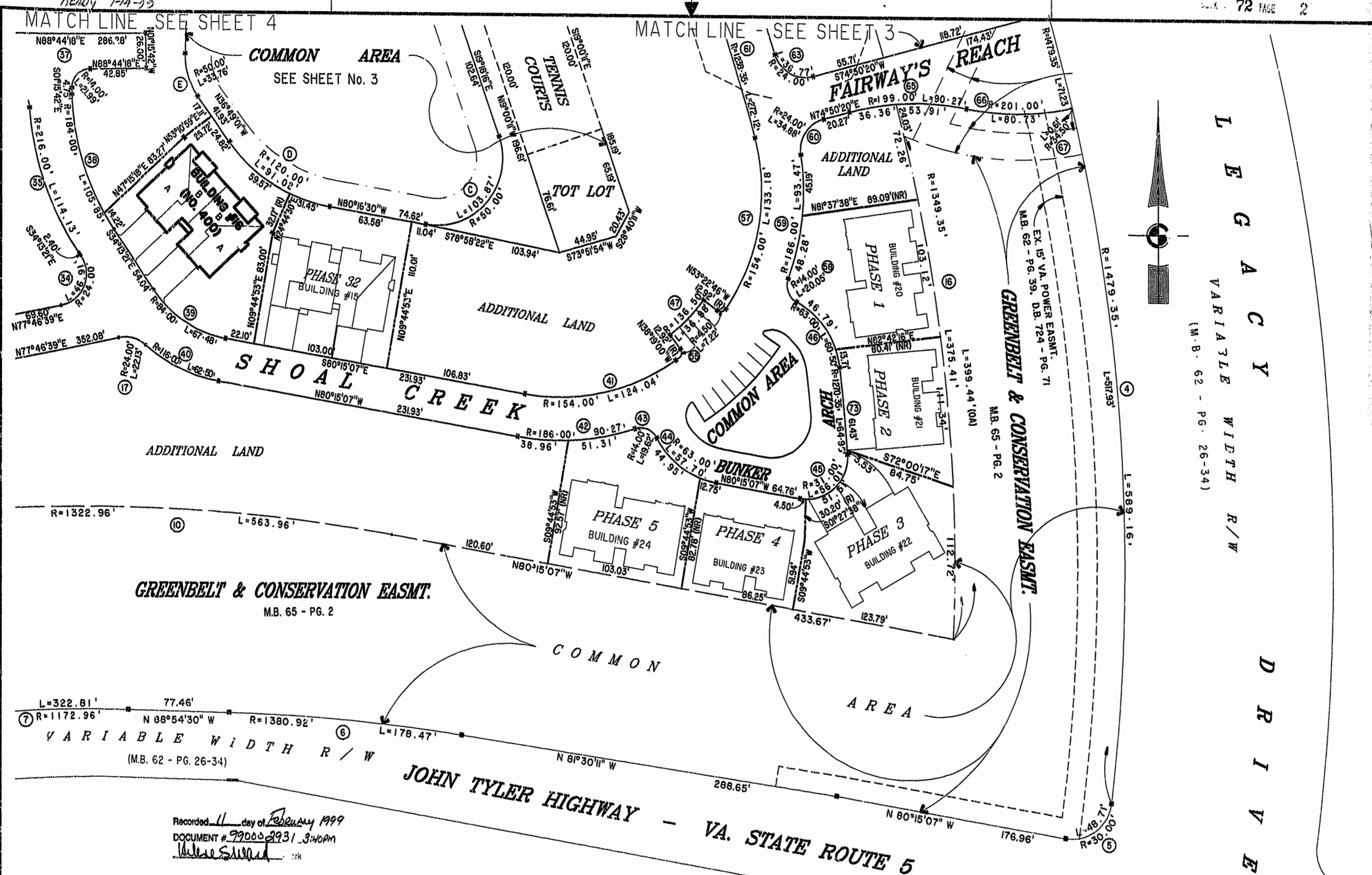


Match Line - SEE SHEET 4

Match Line - SEE SHEET 3



LEGACY
 VARIABLE WIDTH R/W
 (M.B. 62 - PG. 26-34)

GREENBELT & CONSERVATION EASMT.
 M.B. 65 - PG. 2

VARIABLE WIDTH R/W
 (M.B. 62 - PG. 26-34)

JOHN TYLER HIGHWAY - VA. STATE ROUTE 5

Recorded 11 day of February 1999
 DOCUMENT # 990002931 3:40PM
W. S. Smith

PLAT RECORDED IN
 P.B. NO. 70 PAGE 1-1



**EXHIBIT "A" PHASE 31
 FAIRWAYS VILLAS
 AT
 GREEN SPRINGS, A CONDOMINIUM
 FOR
 GREEN SPRINGS DEVELOPMENT, L.C.
 BERKELEY DISTRICT JAMES CITY COUNTY, VIRGINIA**

Hassell & Folkes, P.C. Engineers Surveyors Planners Chesapeake, VA 23320 (757) 547-9531	SIZE CONTRACT NO C 95-079	DISK/BOX 6A/16 REF: B/13	FILENAME FAIRWY31.UWG FWAYPLAT.DWG	REV.
SCALE: 1"=60'	DATE: 01/08/99	SHEET 2 of 7		