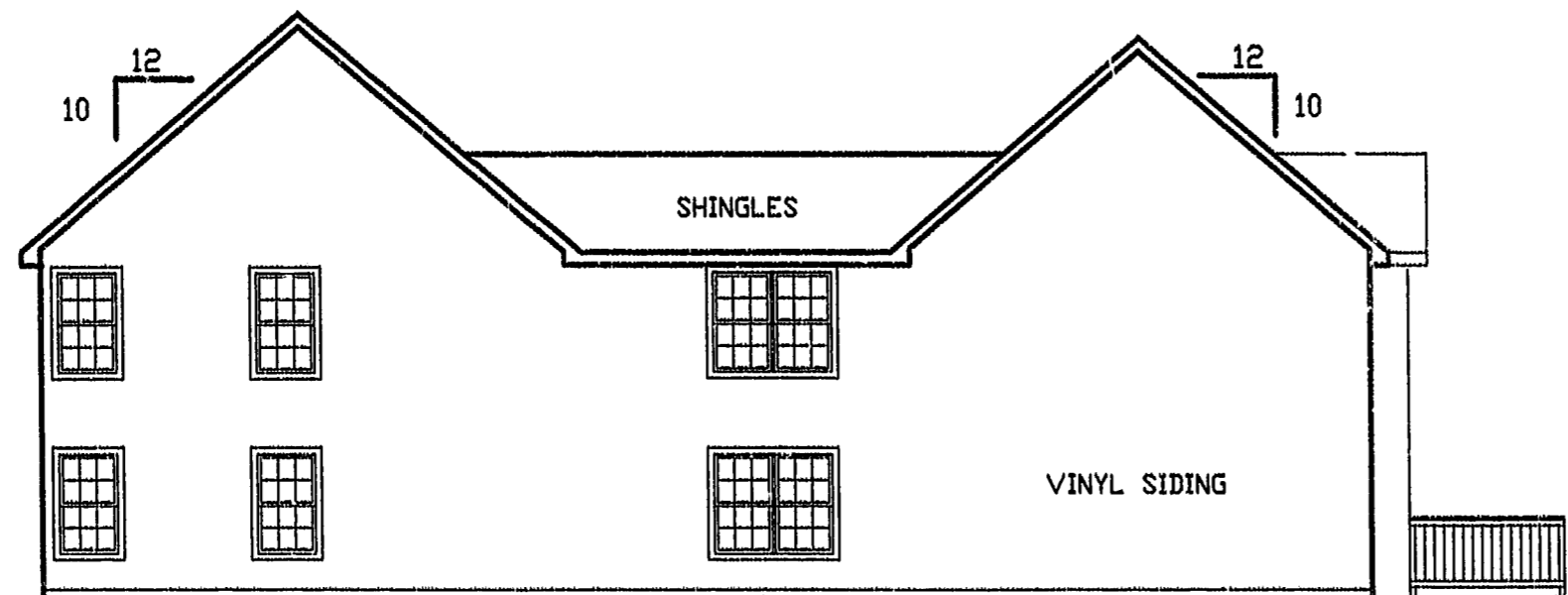




FRONT ELEVATION

1/8" = 1'-0"



REAR ELEVATION

1/8" = 1'-0"

Recorded 8 day of Feb 1999
 DOCUMENT # 99-0002614 2:30pm
Anthony Leckridge Dep. Clerk
 PLAT RECORDED IN
 P.B. NO. 71 PAGE 102-104 103



EXHIBIT "C" PHASE 6
FAIRWAYS VILLAS
 AT
GREEN SPRINGS, A CONDOMINIUM
 FOR
GREEN SPRINGS DEVELOPMENT, L.C.
 BERKELEY DISTRICT JAMES CITY COUNTY, VIRGINIA

Hassell & Folkes, P.C. Engineers Surveyors Planners Chesapeake, VA, 23320 (757) 547-9531	SIZE C	CONTRACT NO. 6EX/ 5	DISK/BOX 6EX/ 5	FILENAME FV11-CD2.DWG	REV
SCALE AS SHOWN	DATE: 01/14/99	SHEET 11 of 12			

