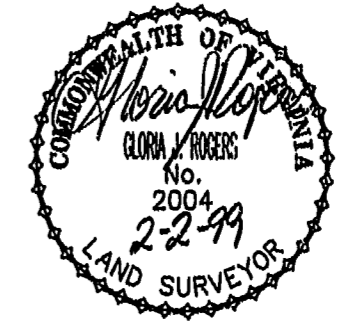
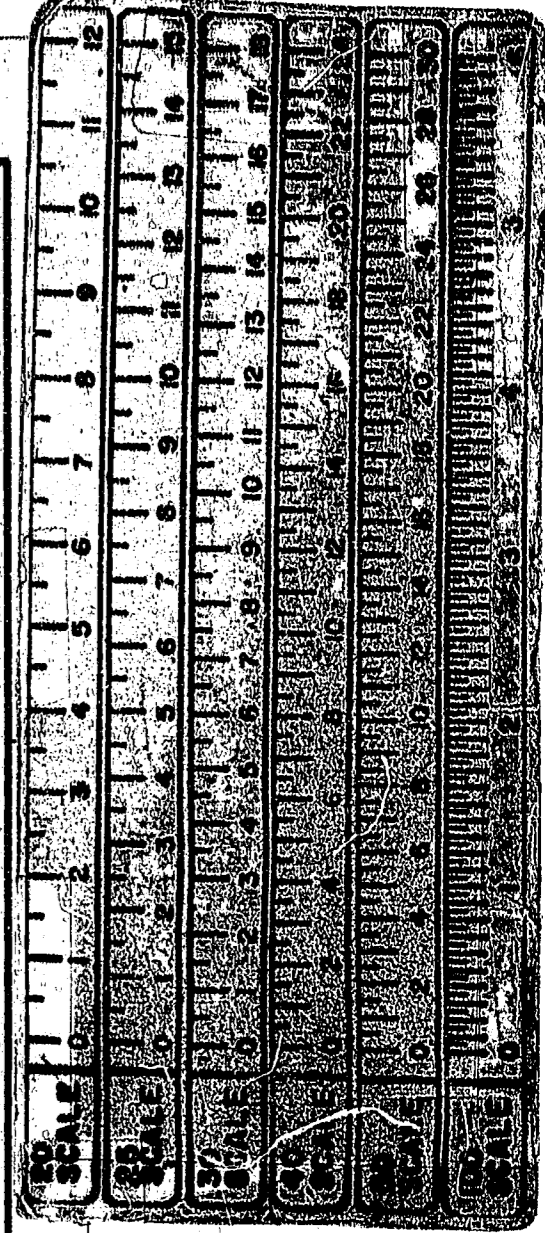
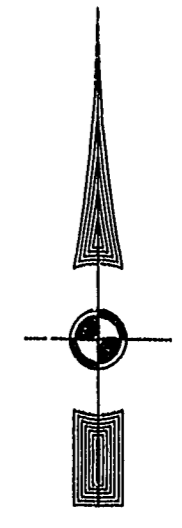
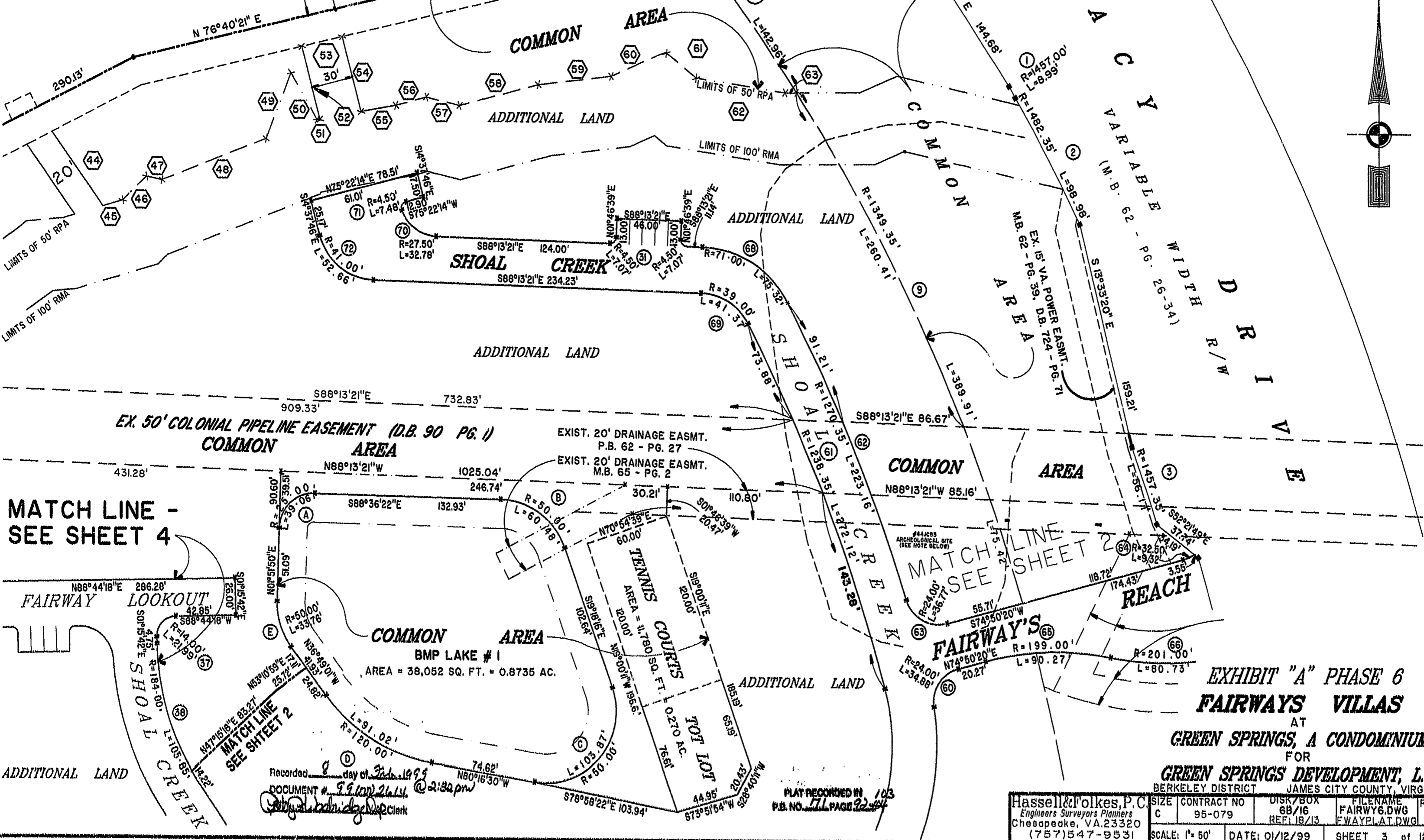


46-1-01-0-0001
"GREENSPRINGS PLANTATION"
(DB 322, PG 254)

EXIST. 20' JAMES CITY COUNTY SERVICE
AUTHORITY SAN. SEWER EASEMENT AS
SHOWN IN AS-BUILT LOCATION. D.B. 141 - PG. 388



MATCH LINE - SEE SHEET 5
N 76°02'42" E
286.07'
144.03'



MATCH LINE -
SEE SHEET 4

MATCH LINE
SEE SHEET 2

EXHIBIT "A" PHASE 6
FAIRWAYS VILLAS
AT
GREEN SPRINGS, A CONDOMINIUM
FOR
GREEN SPRINGS DEVELOPMENT, L.C.
BERKELEY DISTRICT JAMES CITY COUNTY, VIRGINIA

Recorded day of Feb. 1999
DOCUMENT # 99-0002614 @ 2:32 pm
Clerk

PLAY RECORDED IN 103
P.B. NO. 71 PAGE 94

| | | | | | |
|--|-----------------|--------------------|----------------|-----------------------|---------------|
| Hassell & Folkes, P.C. Engineers Surveyors Planners Chesapeake, VA 23320 (757) 547-9531 | SIZE C | CONTRACT NO 95-079 | DISK/BOX 68/16 | FILENAME FAIRWAY6.DWG | REV. |
| | SCALE: 1" = 50' | DATE: 01/12/99 | REF: 18/13 | F.WAY.PLAT.DWG | SHEET 3 of 12 |