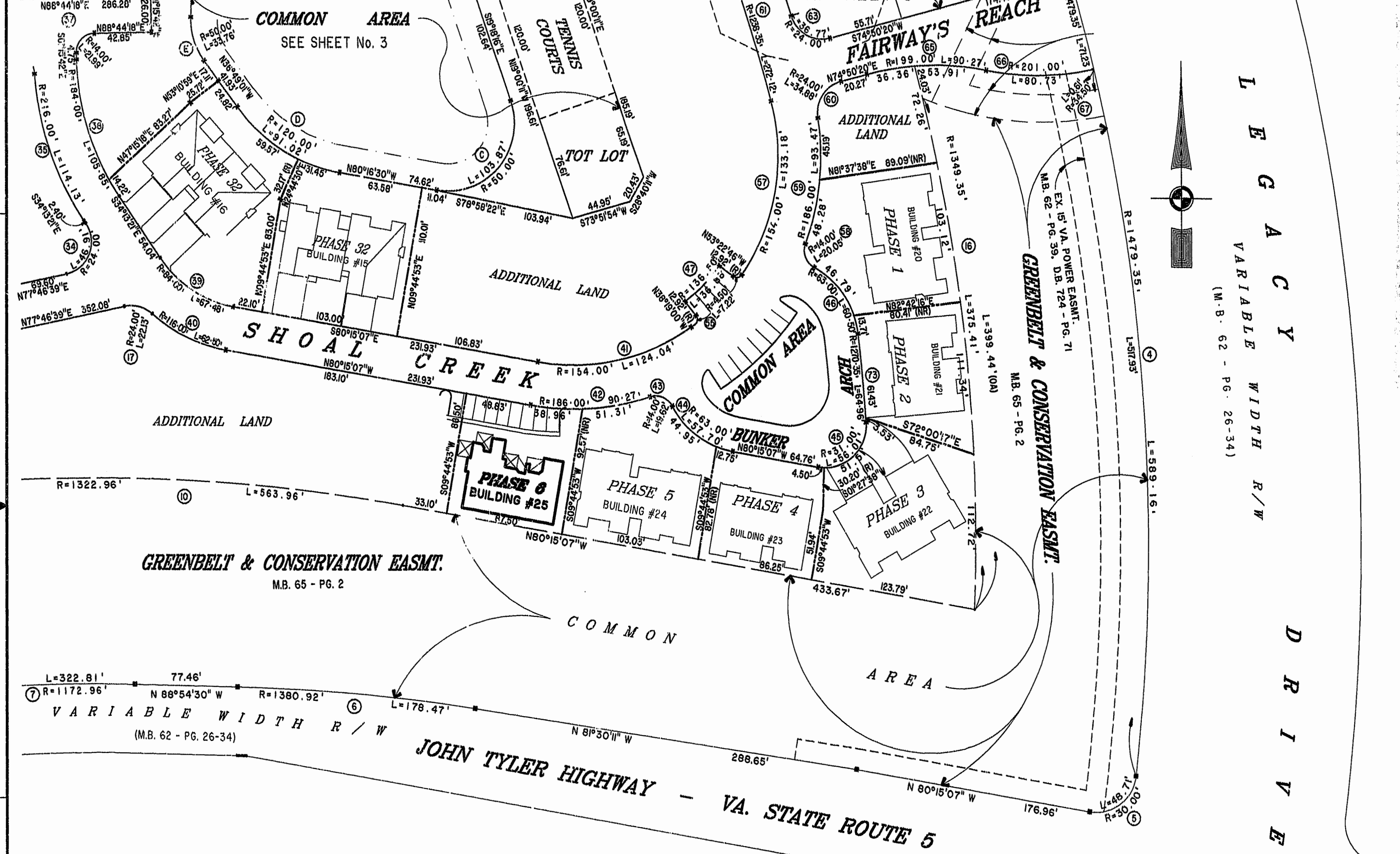


MATCH LINE - SEE SHEET 4

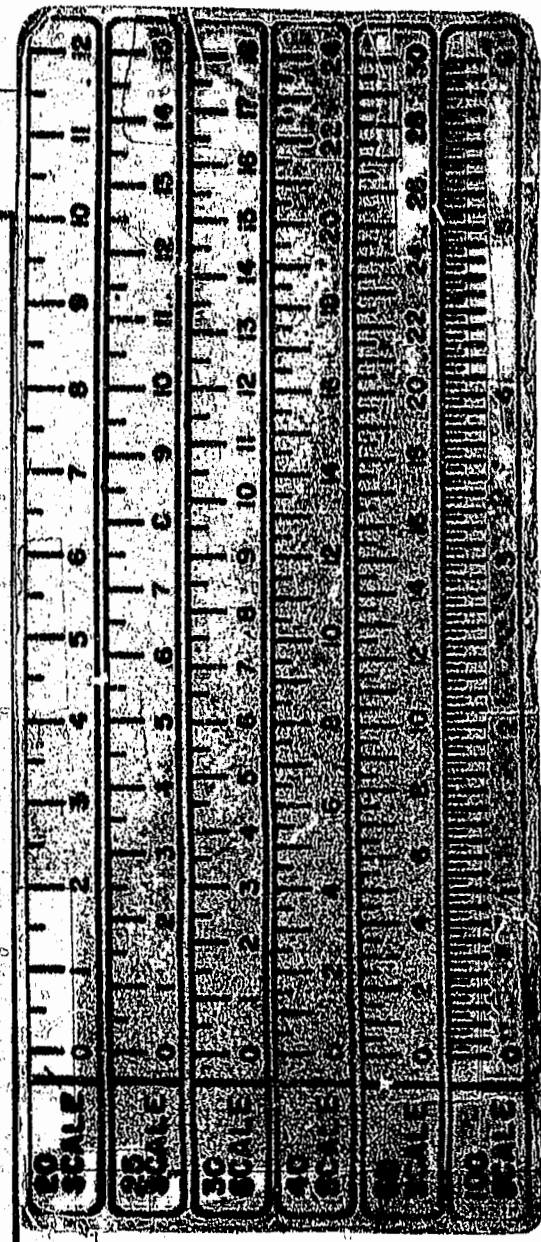
MATCH LINE - SEE SHEET 3



LEGACY
 VARIABLE WIDTH R/W
 (M.B. 62 - PG. 26-34)

 GREENBELT & CONSERVATION EASMT.
 (M.B. 65 - PG. 2)

 DRIV E

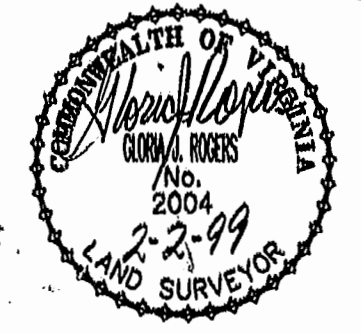


L=322.81' 77.46'
 R=1172.96' N 88°54'30" W R=1380.92'
 VARIABLE WIDTH R/W
 (M.B. 62 - PG. 26-34)

JOHN TYLER HIGHWAY - VA. STATE ROUTE 5
 N 81°30'11" W 288.65'
 N 80°15'07" W 176.96'

Recorded 8 day of Feb 1999 @ 2:32pm
 DOCUMENT # 99002644
 Clerk

PLAT RECORDED IN 103
 P.B. NO. 71 PAGE 2-104



Hassell & Folkes, P.C. Engineers Surveyors Planners Chesapeake, VA. 23320 (757)547-9531	SIZE CONTRACT NO C 95-079	DISK/BOX 68/16 REF: 18/13	FILENAME FAIRWAYS.DWG FWAYPL AT.DWG	REV.
SCALE: 1" = 50'	DATE: 01/12/99	SHEET 2 of 12		

EXHIBIT "A" PHASE 6
 FAIRWAYS VILLAS
 AT
 GREEN SPRINGS, A CONDOMINIUM
 FOR
 GREEN SPRINGS DEVELOPMENT, L.C.
 BERKELEY DISTRICT JAMES CITY COUNTY, VIRGINIA