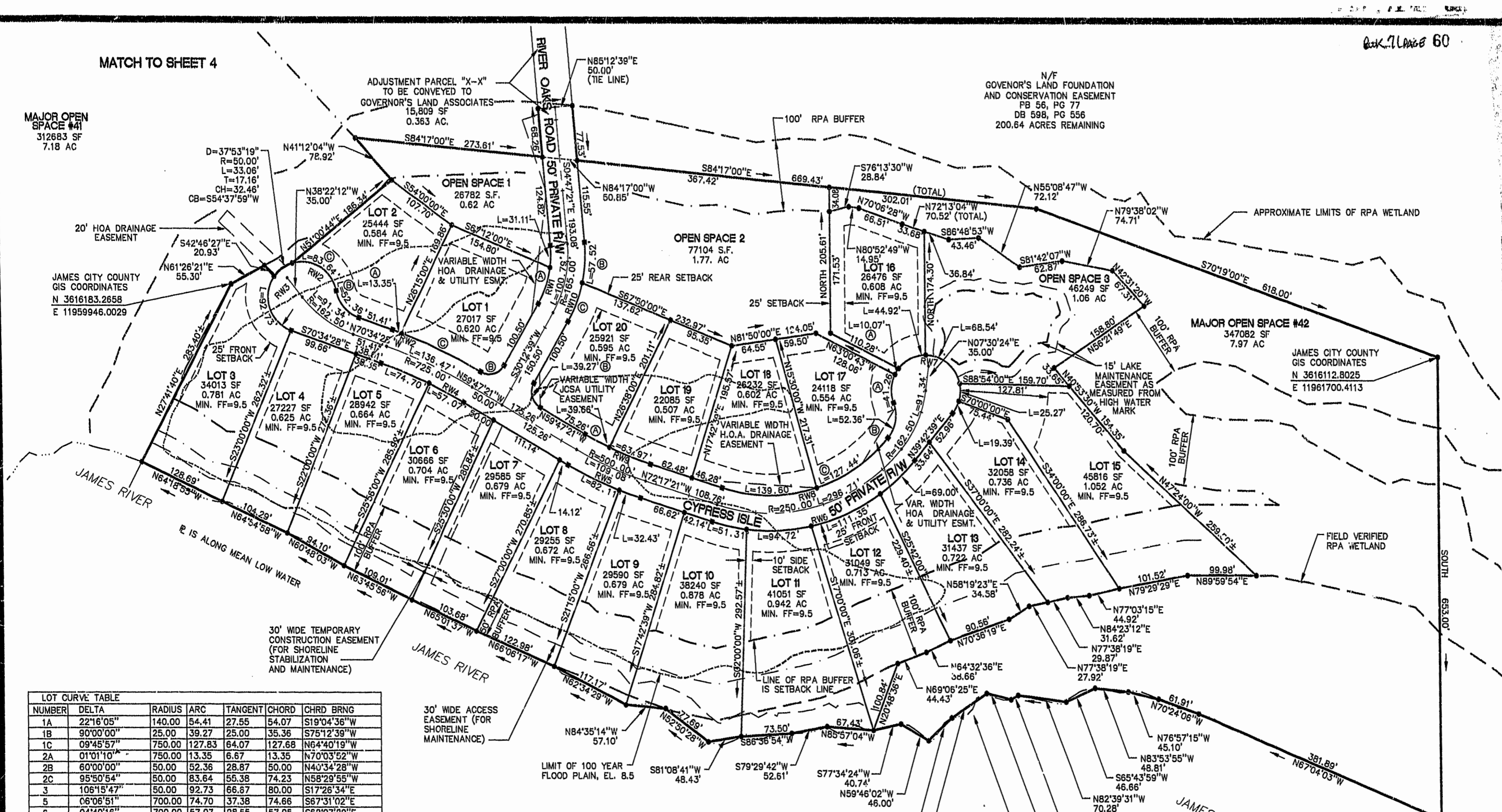


MATCH TO SHEET 4

MAJOR OPEN SPACE #41  
312683 SF  
7.18 AC

N/F  
GOVERNOR'S LAND FOUNDATION  
AND CONSERVATION EASEMENT  
FB 56, PG 77  
DB 598, PG 556  
200.64 ACRES REMAINING

ADJUSTMENT PARCEL "X-X"  
TO BE CONVEYED TO  
GOVERNOR'S LAND ASSOCIATES  
15,809 SF  
0.363 AC.



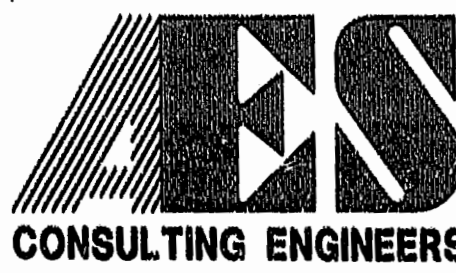
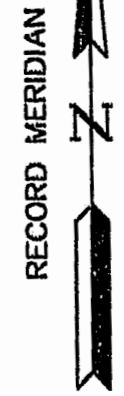
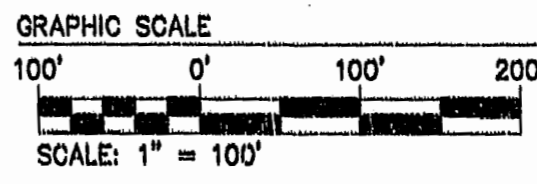
NUMBER	DELTA	RADIUS	ARC	TANGENT	CHORD	CHRD BRNG
1A	22'16"05"	140.00	54.41	27.55	54.07	S19'04'36"W
1B	90'00"00"	25.00	39.27	25.00	35.36	S75'12'39"W
1C	09'45'57"	750.00	127.83	64.07	127.68	N64'40'19"W
2A	01'01'10"	750.00	13.35	6.67	13.35	N70'03'52"W
2B	60'00'00"	50.00	52.36	28.87	50.00	N40'34'28"W
2C	95'50'54"	50.00	83.64	55.38	74.23	N58'29'55"W
3	106'18'47"	50.00	92.73	66.87	80.00	S17'26'34"E
5	06'06'51"	700.00	74.70	37.38	74.66	S67'31'02"E
6	04'40'16"	700.00	57.07	28.55	57.05	S62'07'29"E
8	08'57'39"	525.00	82.11	41.14	82.02	S64'16'11"E
9	03'32'21"	525.00	32.43	16.22	32.42	S70'31'11"E
10	10'41'25"	275.00	51.31	25.73	51.24	S77'38'04"E
11	19'44'05"	275.00	94.72	47.83	94.25	N87'09'11"E
12	23'11'57"	275.00	111.35	56.45	110.59	N63'41'10"E
13	14'22'33"	275.00	69.00	34.66	68.82	N46'3'55"E
14	22'13'02"	50.00	19.39	9.82	19.27	N28'36'08"E
15	28'57'18"	50.00	25.27	12.91	25.00	N03'00'58"E
16	51'28'29"	50.00	44.92	24.10	43.42	S64'15'45"W
17A	47'16'38"	50.00	41.26	21.88	40.10	S03'20'58"W
17B	60'00'00"	50.00	52.36	28.87	50.00	S09'42'39"W
17C	32'27'06"	225.00	127.44	65.48	125.74	S55'56'12"W
18	35'32'54"	225.00	139.60	72.13	137.37	S89'56'12"W
19	07'42'58"	475.00	63.97	32.03	63.92	N68'25'52"W
20A	04'47'02"	475.00	39.66	19.84	39.65	N62'10'52"W
20B	90'00'00"	25.00	39.27	25.00	35.36	N14'47'21"W
20C	17'39'12"	190.00	58.54	29.50	58.31	N21'23'03"E
OPEN1	12'43'55"	140.00	31.11	15.62	31.05	S01'34'37"W
OPEN2A	11'32'14"	50.00	10.07	5.05	10.05	S32'45'24"W
OPEN2B	17'20'48"	190.00	57.52	28.98	57.30	N03'53'03"E
OPEN3	78'32'19"	50.00	68.54	40.88	63.30	N50'43'51"W

NUMBER	DELTA	RADIUS	ARC	TANGENT	CHORD	CHRD BRNG
RW1	35'00'00"	140.00	85.52	44.14	84.20	S12'42'39"W
RW2	10'47'07"	750.00	141.18	70.80	140.97	N65'10'54"W
RW3	24'00'00"	50.00	209.43	104.71	209.43	S49'25'32"W
RW4	10'47'07"	700.00	131.77	66.08	131.57	S68'10'54"E
RW5	12'30'00"	525.00	114.54	57.50	114.31	S66'02'21"E
RW6	68'00'00"	275.00	326.38	185.49	307.56	N73'42'39"E
RW7	24'00'00"	50.00	209.45	104.71	209.45	N80'17'21"W
RW8	68'00'00"	225.00	267.04	151.76	225.00	S73'42'39"W
RW9	12'30'00"	475.00	103.63	52.02	103.42	N66'02'21"W
RW10	35'00'00"	190.00	116.06	59.91	114.27	N12'42'39"E

NOTE:  
 1. WETLANDS AND LANDS WITHIN RESOURCE PROTECTION AREAS SHALL REMAIN IN A NATURAL UNDISTURBED STATE EXCEPT FOR THOSE ACTIVITIES PERMITTED BY SECTION 23-9(C)(1) OF THE JAMES CITY COUNTY CODE.  
 2. MAJOR OPEN SPACE #41 (7.18 ACRES), MAJOR OPEN SPACE #42 (7.97 ACRES), MAJOR OPEN SPACE #47 (1.68 ACRES), OPEN SPACE #1 (0.62 ACRES), OPEN SPACE #2 (1.77 ACRES, AND OPEN SPACE #3 (1.06 ACRES) ARE CONTAINED WITHIN A NATURAL OPEN SPACE EASEMENT. NATURAL OPEN SPACE EASEMENTS SHALL REMAIN IN A NATURAL, UNDISTURBED STATE EXCEPT FOR THOSE ACTIVITIES REFERENCED

PLAT RECORDED IN  
P.B. NO. 71 PAGE 58-62

Recorded 30 day of December 1998  
DOCUMENT 9800 255969 3:57  
Hilbert Clerk



5248 Olde Towne Road, Suite 1  
Williamsburg, Virginia 23188  
(757) 253-0040  
Fax (757) 220-8994

PLAT OF SUBDIVISION AND BOUNDARY LINE ADJUSTMENT  
CYPRESS ISLE  
THE  
GOVERNOR'S LAND  
At Two Rivers  
POWHATAN DISTRICT JAMES CITY COUNTY VIRGINIA



No.	DATE	REVISION / COMMENT / NOTE	BY
1	12/98	REVISE EASEMENT AND SETBACKS ON LOTS 6 AND 7	VMB

Designed	VMB	Drawn	KEG
Scale	1"=100'	Date	11/98
Project No.	7173-4-2		
Drawing No.	3 OF 4		

12.16.98-09.37 G:\42p03A.dwg VMB