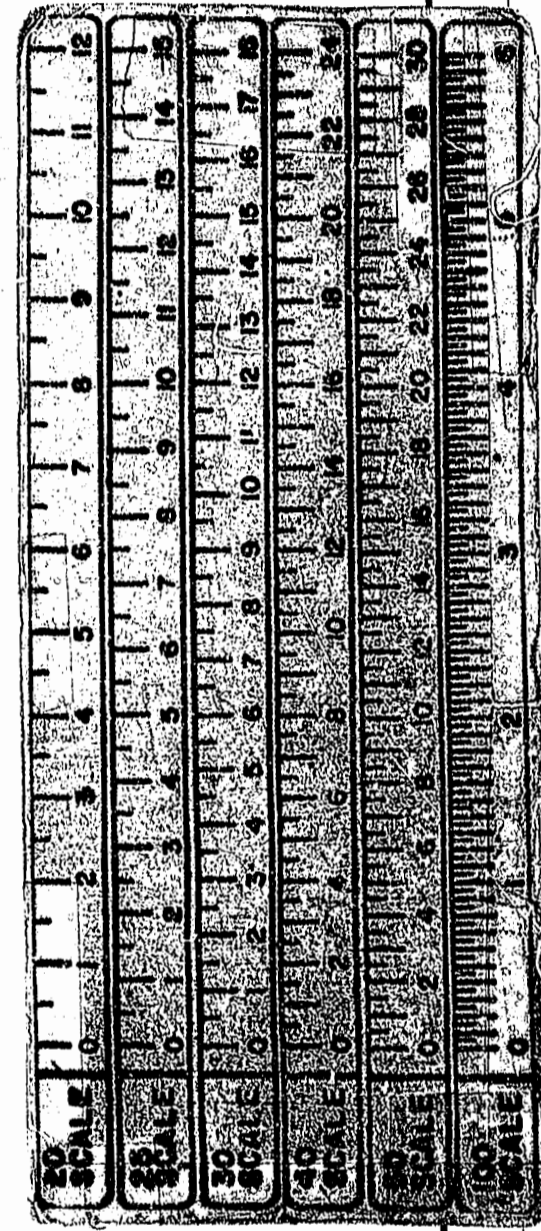
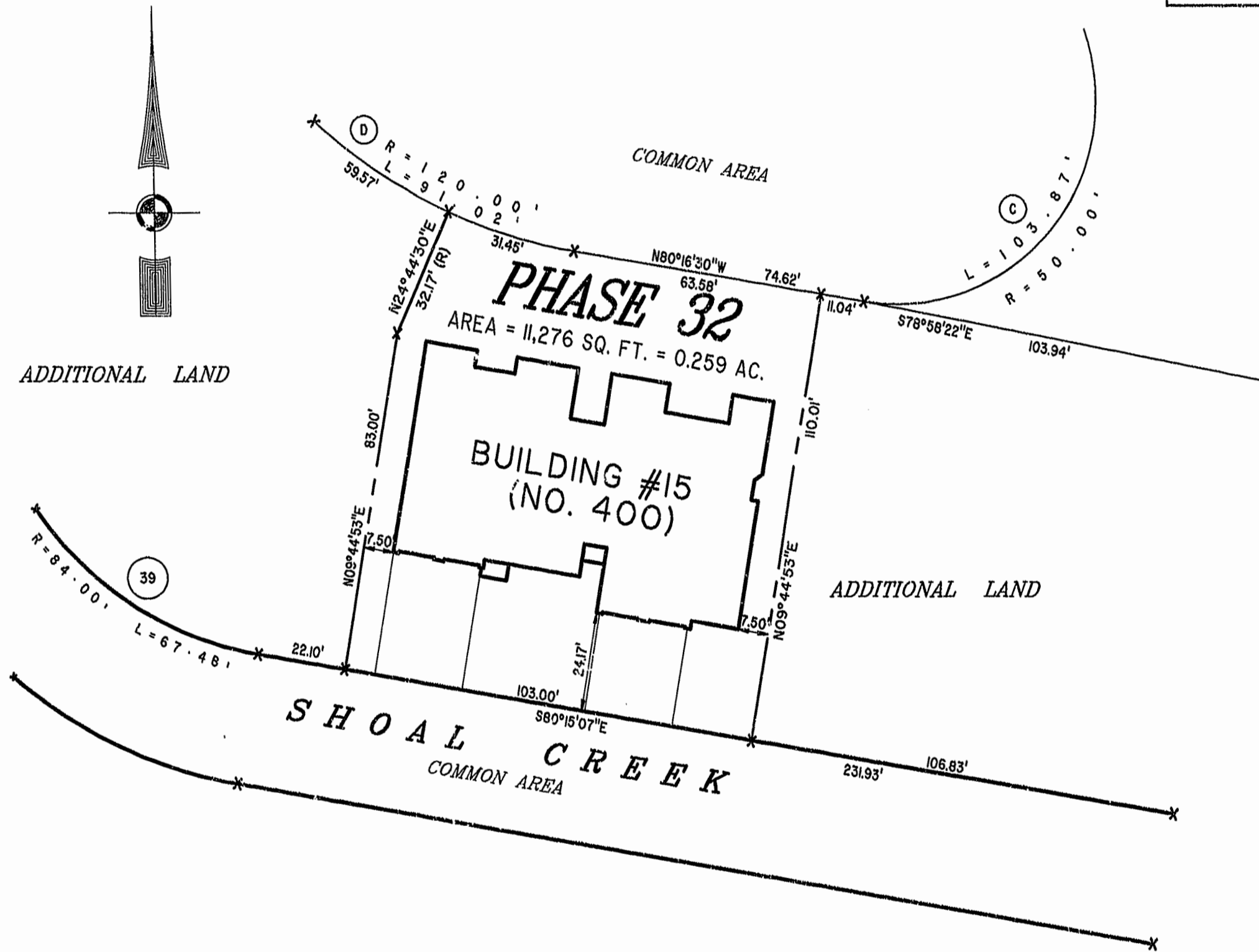
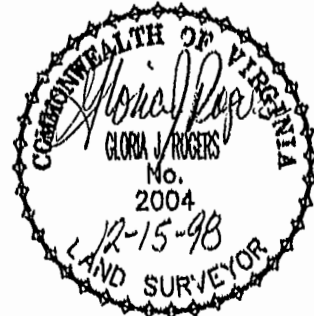


BUILDING NUMBER	UNIT NUMBER	UNIT TYPE	STREET ADDRESS
15	15-305	A	305 SHOAL CREEK
15	15-307	B	307 SHOAL CREEK
15	15-309	C	309 SHOAL CREEK
15	15-311	D-1	311 SHOAL CREEK



12:17 pm
 Recorded 16 day of Dec. 1998
 DOCUMENT: 980724430
 Release Ward, Clerk



PLAT RECORDED IN
 P.B. NO. 21 PAGE 38-44

**EXHIBIT "A" PHASE 32-
 FAIRWAYS VILLAS**
 AT
GREEN SPRINGS, A CONDOMINIUM
 FOR
GREEN SPRINGS DEVELOPMENT, L.C.
 BERKELEY DISTRICT - JAMES CITY COUNTY, VIRGINIA

Hassell & Folkes, P.C. Engineers Surveyors Planners Chesapeake, VA. 23320 (757) 547-9531	SIZE: C CONTRACT NO: 95-079	DISK/BOX: 6/16 REF: 18/13	FILENAME: FAIRWY32.DWG FWAYPLAT.DWG	REV.
SCALE: 1" = 25'	DATE: 12/10/98	SHEET 7 of 7		