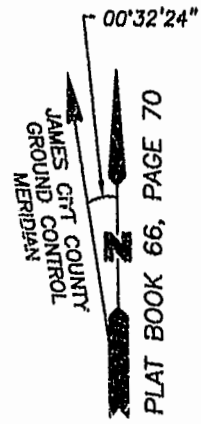


PLAT OF SUBDIVISION
WATERFORD
 AT
POWHATAN SECONDARY
 PHASE FIVE
 BERKELEY DISTRICT
 JAMES CITY COUNTY, VIRGINIA

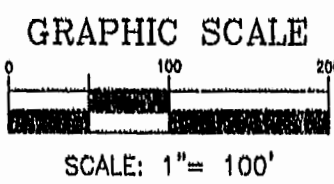
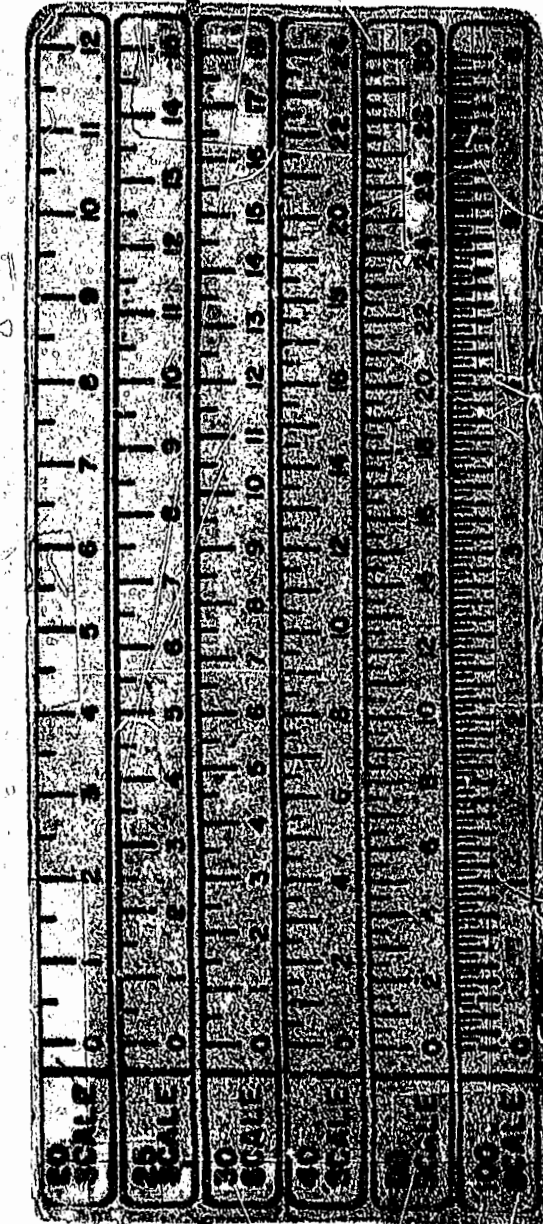
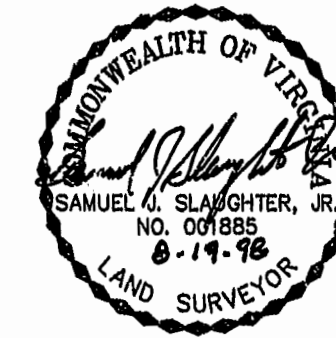
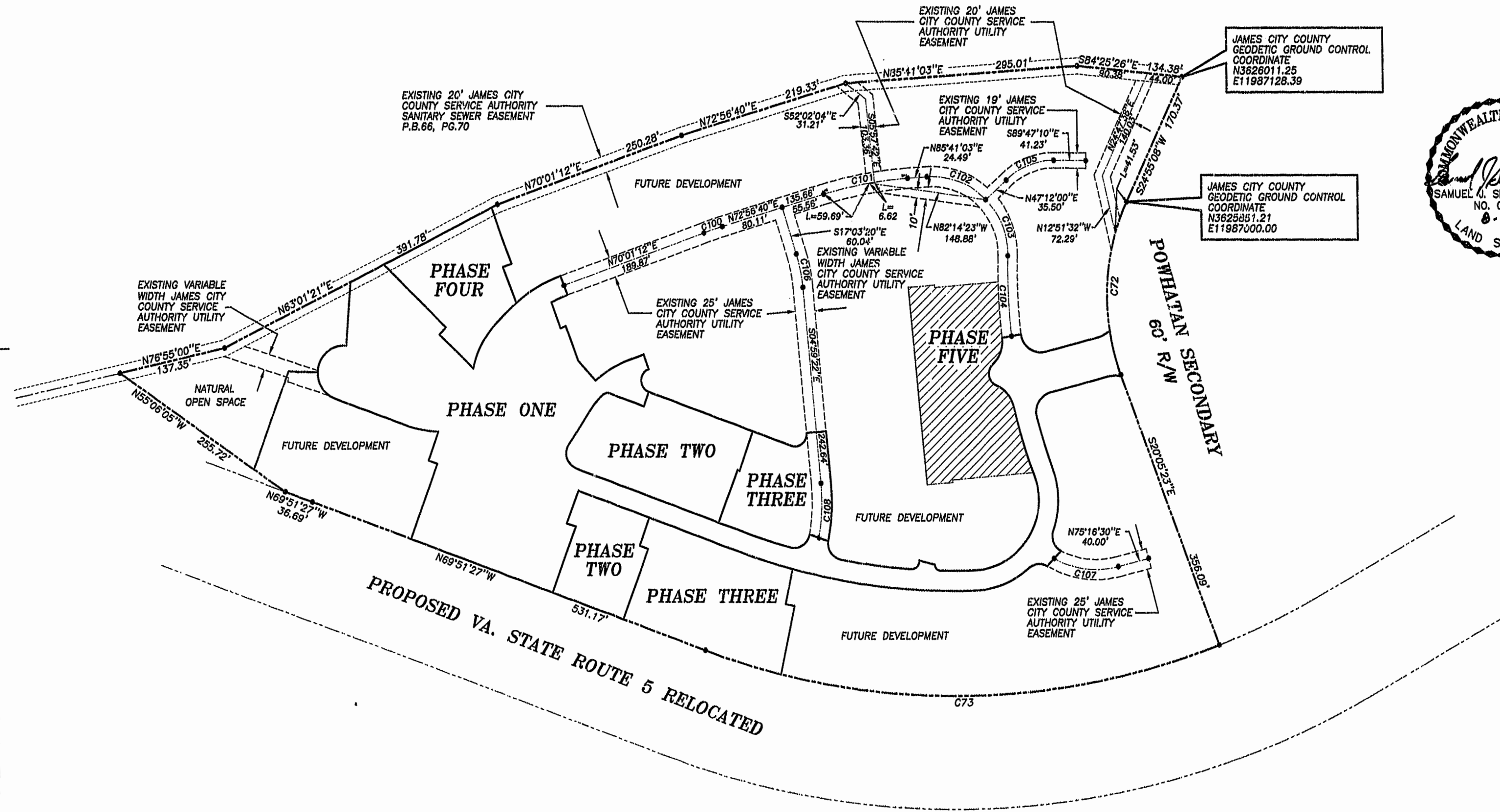
DATE: 8/19/98 SHEET 2 OF 3 SCALE: 1"=100'
 PROJECT NO: 97-008 DRAWN BY: CADD



SLEDD & ASSOCIATES, P.C.
 ENGINEERS PLANNERS SURVEYORS
 11832 ROCK LANDING DRIVE, SUITE 203
 NEWPORT NEWS, VIRGINIA 23606
 (757) 873-3388



NOW OR FORMERLY
 POWHATAN ENTERPRISES, INC.



PLAT RECORDED IN
 P.B. NO. _____ PAGE _____

CURVE DATA

NUMBER	RADIUS	DELTA	ARC	TANGENT	CHORD	CHORD BEARING
C72	280.00	45°00'31"	219.95	116.00	214.34	S02°24'52"W
C73	924.91	41°26'14"	668.91	349.84	654.43	S89°25'26"W
C100	487.80	02°25'28"	24.88	12.44	24.88	N71°28'58"E
C101	487.80	12°44'23"	108.40	54.42	108.17	N79°18'51"E
C102	95.09	49°43'07"	82.44	44.02	79.87	S89°27'24"E
C103	95.09	41°33'55"	88.92	36.05	87.42	S19°12'44"E
C104	722.49	07°53'06"	99.43	49.79	99.35	S02°22'19"E
C105	86.87	44°14'38"	67.16	35.35	65.50	N68°05'31"E
C106	200.00	12°03'58"	42.12	21.14	42.04	S11°01'21"E
C107	112.80	43°03'30"	84.84	44.38	82.97	S83°11'45"E
C108	280.00	18°30'38"	67.88	34.05	67.47	S02°45'57"W

10:30 AM 30 days Oct 1998
 Recorded
 DOCUMENT # 980230906
 Release/Share Clerk