

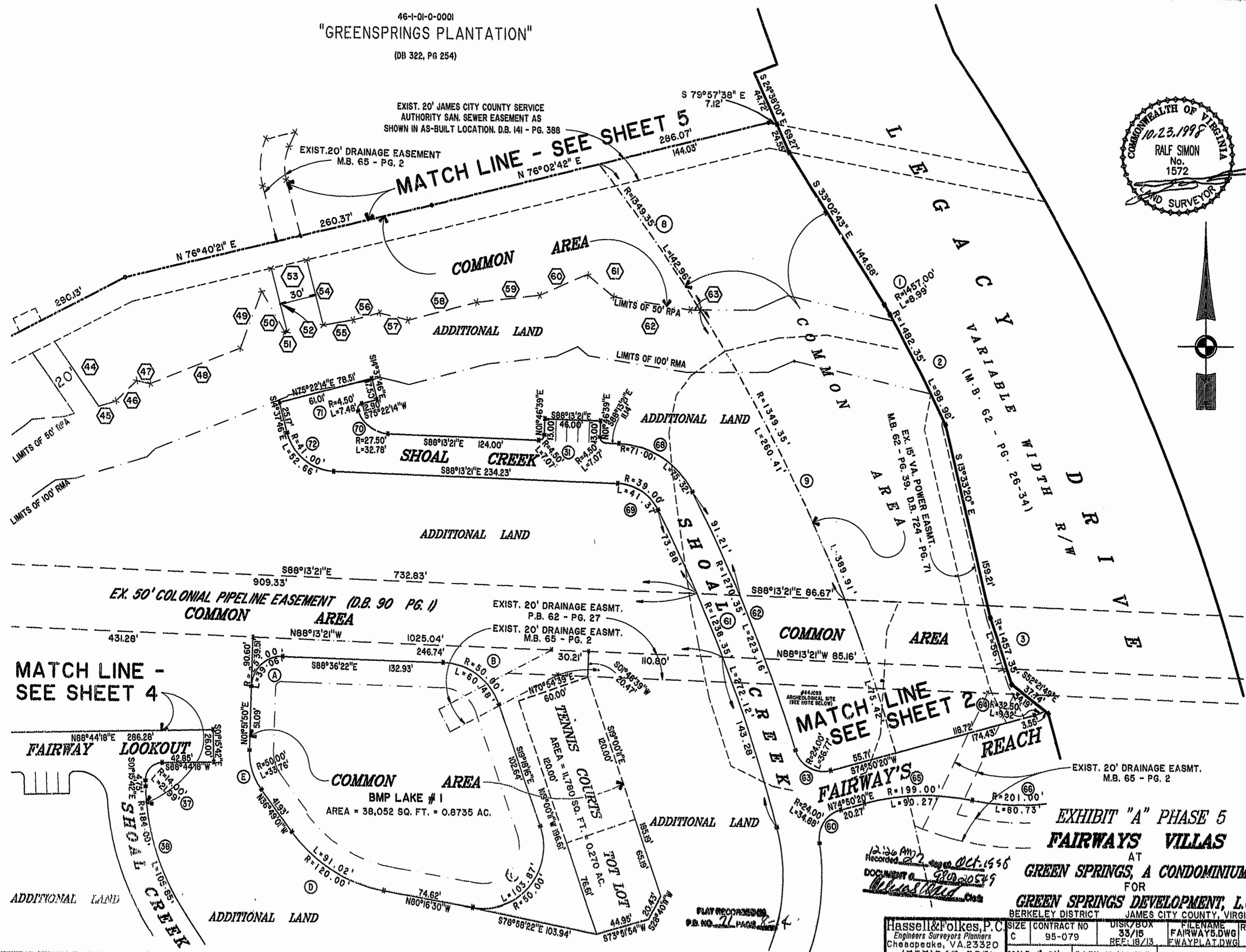
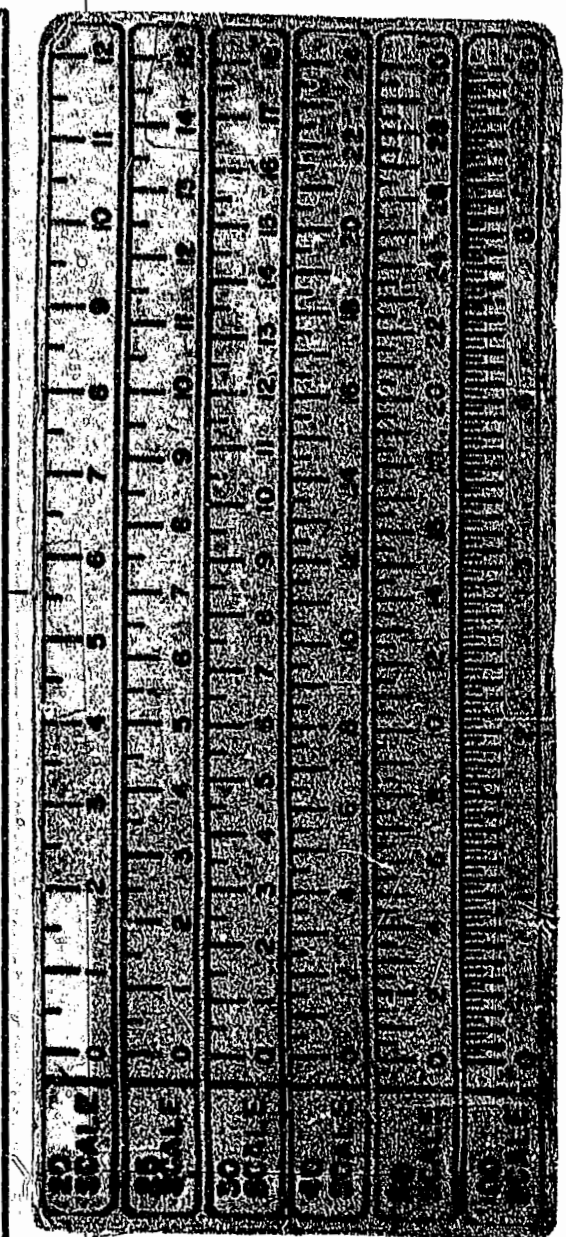
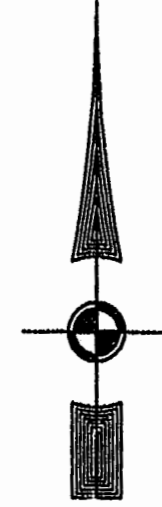
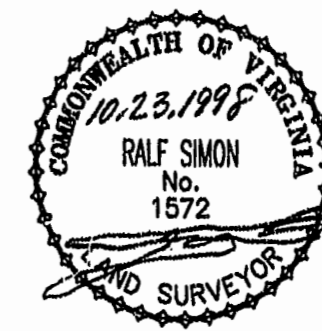
46-1-01-0-0001  
"GREENSPRINGS PLANTATION"

(DB 322, PG 254)

EXIST. 20' JAMES CITY COUNTY SERVICE  
AUTHORITY SAN. SEWER EASEMENT AS  
SHOWN IN AS-BUILT LOCATION. D.B. 141 - PG. 388

EXIST. 20' DRAINAGE EASEMENT  
M.B. 65 - PG. 2

MATCH LINE - SEE SHEET 5  
N 76°02'42" E



MATCH LINE -  
SEE SHEET 4

MATCH LINE  
SEE SHEET 2

COMMON AREA  
BMP LAKE #1  
AREA = 38,052 SQ. FT. = 0.8735 AC.

TENNIS COURTS  
AREA = 11,780 SQ. FT. = 0.270 AC.

FAIRWAYS

EXHIBIT "A" PHASE 5  
FAIRWAYS VILLAS  
AT  
GREEN SPRINGS, A CONDOMINIUM  
FOR  
GREEN SPRINGS DEVELOPMENT, L.C.  
BERKELEY DISTRICT JAMES CITY COUNTY, VIRGINIA

Recorded 22 OCT 1998  
DOCUMENT # 98020549

PLAN RECORDED  
P.B. NO. 21 PAGE 3-4

Hassell & Folkes, P.C. Engineers Surveyors Planners Chesapeake, VA 23320 (757)547-9531	SIZE C CONTRACT NO 95-079	DISK/BOX 33/15 REF: 18/13	FILENAME FAIRWAYS.DWG FWAYPLAT.DWG	SCALE: 1" = 50' DATE: 12/08/97 SHEET 3 of 7
---	------------------------------	------------------------------	---------------------------------------	---