

CURVE TABLE						
CURVE	RADIUS	LENGTH	TANGENT	CHORD	BEARING	DELTA
2	485.00'	127.13'	63.93'	126.77'	S11°43'03"E	15°01'08"
3	25.00'	36.81'	22.66'	33.58'	N46°23'42"W	84°22'25"
4	25.00'	39.27'	25.00'	35.36'	S46°25'05"W	90°00'00"
5	50.00'	36.14'	18.90'	35.36'	S19°17'12"E	41°24'35"
6	50.00'	229.35'	56.69'	75.00'	S88°34'55"E	262°49'09"
7	50.00'	36.14'	18.90'	35.36'	N22°07'22"E	41°24'35"
8	50.00'	36.14'	18.90'	35.36'	N19°17'12"W	41°24'35"
9	50.00'	229.70'	56.30'	74.77'	N88°22'54"W	263°13'12"
10	25.00'	57.51'	55.90'	45.64'	S22°40'36"E	131°48'37"
11	25.00'	36.81'	22.66'	33.58'	N49°13'52"E	84°22'25"
12	485.00'	679.51'	408.94'	625.28'	S47°10'53"W	80°16'26"
13	950.00'	607.84'	314.73'	597.52'	N68°59'18"E	36°39'34"
14	50.00'	37.94'	19.93'	37.03'	N28°55'19"E	43°28'24"
15	50.00'	229.29'	56.77'	75.04'	N41°26'33"W	262°44'39"
16	50.00'	34.53'	17.99'	33.85'	S70°08'38"W	39°34'16"
17	1000.00'	645.07'	334.21'	633.94'	N68°50'18"E	36°57'35"
18	435.00'	808.91'	583.02'	697.30'	S34°02'44"W	106°32'43"
19	485.00'	36.25'	18.13'	36.24'	S21°22'06"E	04°16'57"

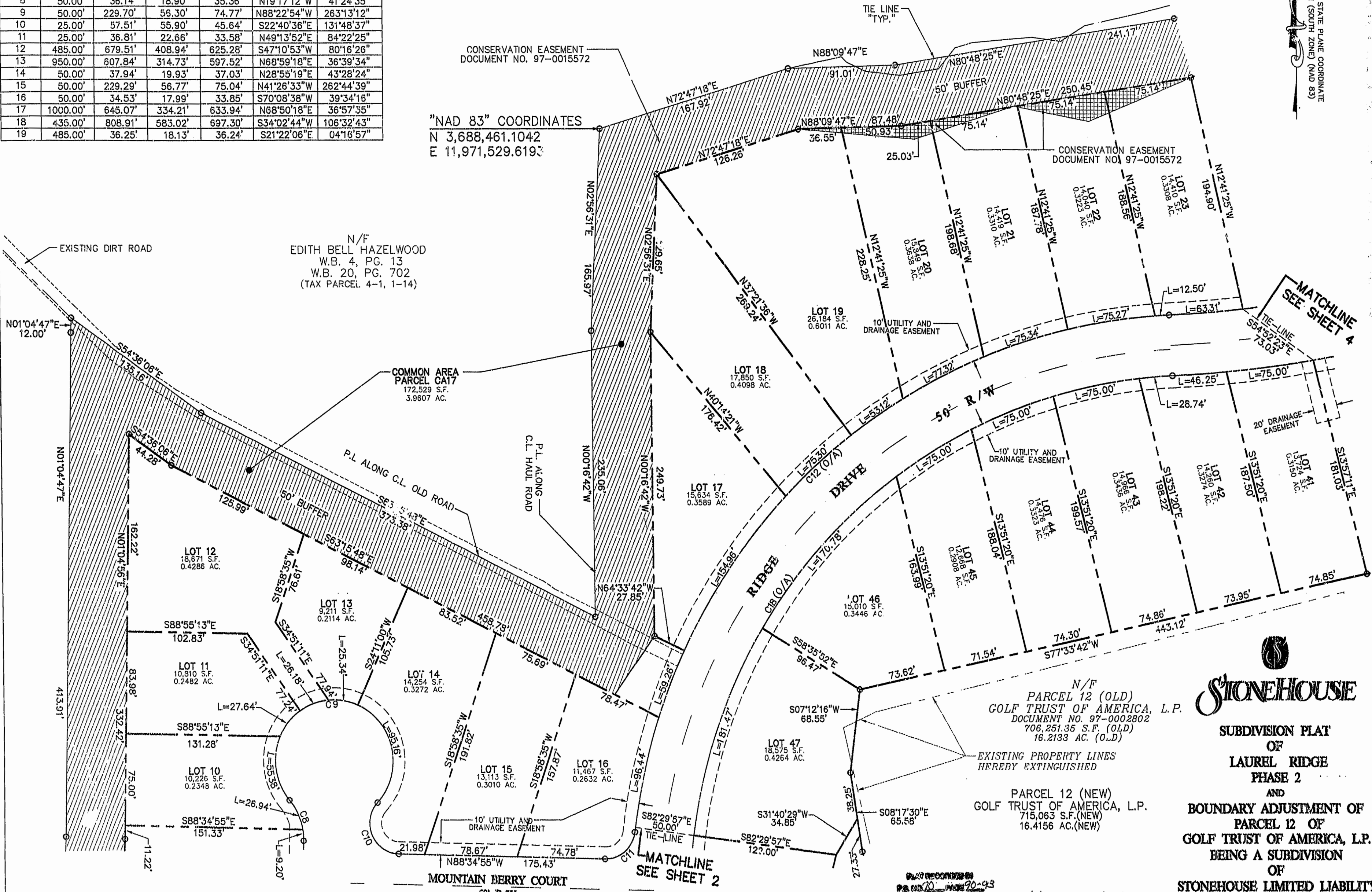
NOTE:
ALL UTILITY EASEMENTS SHALL BE SUBJECT TO AN EXCLUSIVE FIVE FOOT IN WIDTH JAMES CITY SERVICE AUTHORITY EASEMENT BASED ON 2.5 FOOT EACH SIDE OF THE JAMES CITY SERVICE WATER AND SEWER LINE. OTHER UTILITIES MAY CROSS THIS EXCLUSIVE EASEMENT FOR ACCESS ONLY. (TYP)

N/F
EDITH BELL HAZELWOOD
W.B. 4, PG. 13
W.B. 20, PG. 702
(TAX PARCEL 4-1, 1-14)

VIRGINIA STATE PLANE COORDINATE SYSTEM (SOUTH ZONE) (NAD 83)

"NAD 83" COORDINATES
N 3,688,461.1042
E 11,971,529.6193

N/F
EDITH BELL HAZELWOOD
W.B. 4, PG. 13
W.B. 20, PG. 702
(TAX PARCEL 4-1, 1-14)



N/F
PARCEL 12 (OLD)
GOLF TRUST OF AMERICA, L.P.
DOCUMENT NO. 97-0002802
706,251.35 S.F. (OLD)
16.2133 AC. (O.L.D.)

PARCEL 12 (NEW)
GOLF TRUST OF AMERICA, L.P.
715,063 S.F. (NEW)
16.4156 AC. (NEW)

STONEHOUSE

SUBDIVISION PLAT
OF
LAUREL RIDGE
PHASE 2
AND
BOUNDARY ADJUSTMENT OF
PARCEL 12 OF
GOLF TRUST OF AMERICA, L.P.
BEING A SUBDIVISION
OF
STONEHOUSE LIMITED LIABILITY
COMPANY
STONEHOUSE DISTRICT, JAMES CITY COUNTY
DATE: 09/09/98 SCALE: 1"=50'
SHEET 3 OF 4

RECORDED
IN BOOK 14 PAGE 90-93
RECORDED 14 09/10/98
DOCUMENT # 980909 2189
Belen...