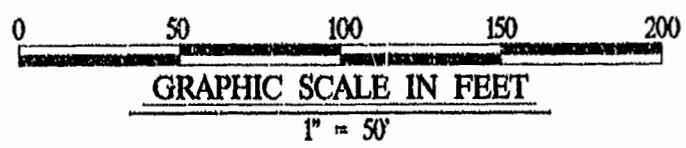
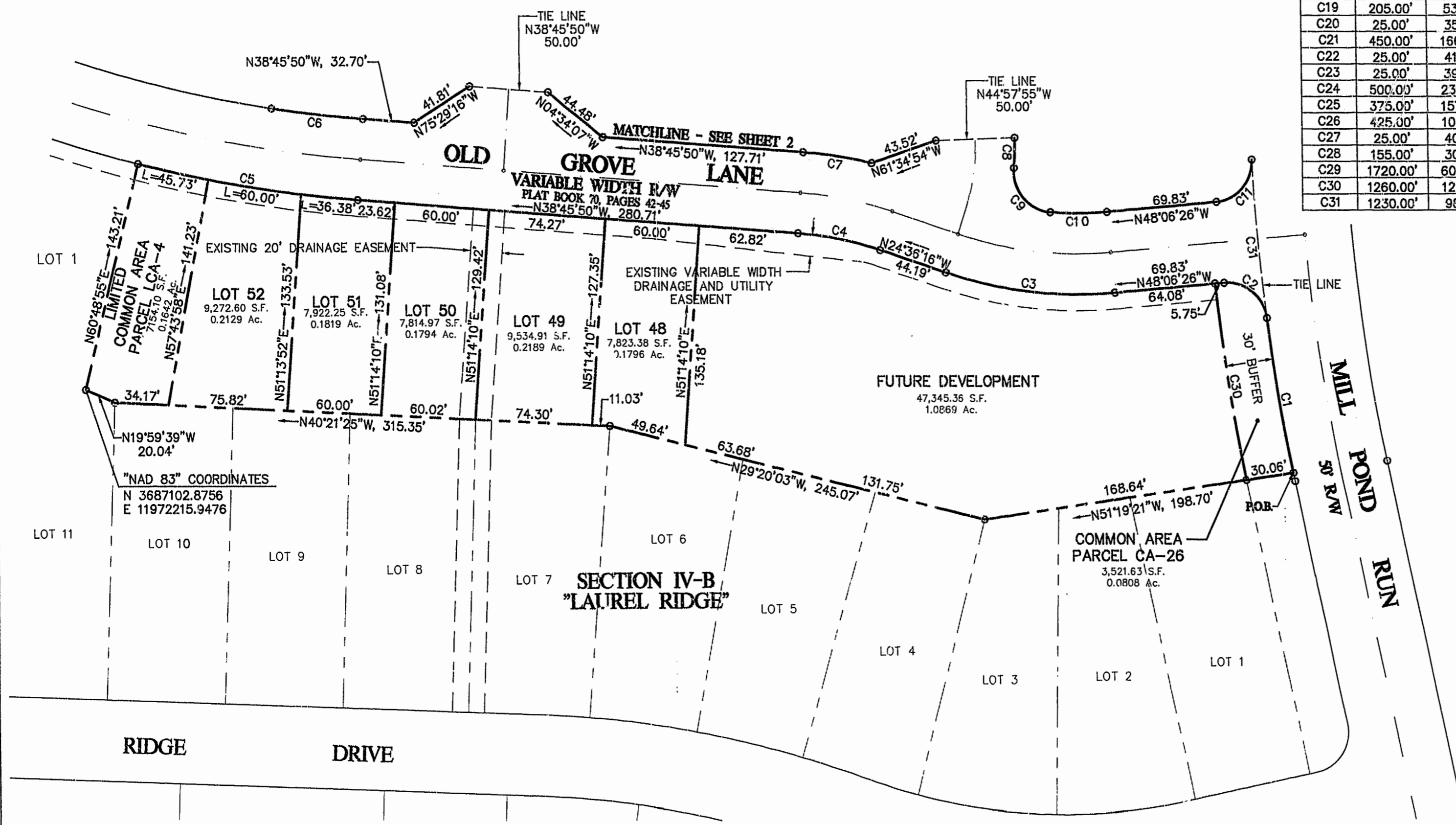


CURVE TABLE						
CURVE	RADIUS	LENGTH	TANGENT	CHORD	BEARING	DELTA
C1	1230.00'	96.67'	48.36'	96.64'	S37°21'29"W	04°30'10"
C2	25.00'	38.27'	24.02'	34.64'	N04°14'56"W	87°43'00"
C3	265.00'	108.70'	55.13'	107.94'	S36°21'21"E	23°30'10"
C4	215.00'	53.13'	26.70'	53.00'	N31°41'03"W	14°09'34"
C5	850.00'	142.11'	71.22'	141.94'	S33°58'27"E	09°34'45"
C6	800.00'	58.85'	29.44'	58.83'	S36°39'23"E	04°12'53"
C7	265.00'	43.94'	22.02'	43.89'	N34°00'48"W	09°30'04"
C8	145.00'	18.57'	9.30'	18.56'	N48°42'13"E	07°20'16"
C9	25.00'	39.65'	25.38'	35.62'	S06°56'12"W	90°52'19"
C10	215.00'	36.05'	18.07'	36.01'	S43°18'12"E	09°36'28"
C11	25.00'	38.27'	24.02'	34.64'	N88°02'04"E	87°43'00"
C12	1230.00'	657.68'	336.90'	649.87'	S59°29'39"W	30°38'09"
C13	25.00'	39.27'	25.00'	3.58'	N29°48'43"E	90°00'00"
C14	25.00'	39.27'	25.00'	3.58'	N60°11'17"W	90°00'00"
C15	1380.00'	717.20'	366.90'	709.16'	S59°55'24"W	29°46'38"
C16	1260.00'	698.93'	358.71'	690.00'	S58°55'15"W	31°46'56"
C17	1430.00'	743.19'	380.19'	734.85'	S59°55'24"W	29°46'38"
C18	1670.00'	589.30'	297.75'	586.25'	N61°20'43"E	20°13'05"
C19	205.00'	53.56'	26.93'	53.41'	N63°58'10"E	14°58'11"
C20	25.00'	35.31'	21.33'	32.45'	S83°03'04"E	80°55'42"
C21	450.00'	166.33'	84.13'	165.39'	N31°59'52"W	21°10'42"
C22	25.00'	41.98'	27.87'	37.22'	N26°42'06"E	96°13'15"
C23	25.00'	39.27'	25.00'	35.36'	S60°11'17"E	90°00'00"
C24	500.00'	239.10'	121.88'	236.83'	N28°53'15"W	27°23'56"
C25	375.00'	157.27'	79.81'	156.12'	S30°34'21"E	24°01'44"
C26	425.00'	101.04'	50.76'	100.80'	S25°22'07"E	13°37'15"
C27	25.00'	40.33'	26.08'	36.09'	S14°01'48"W	92°25'07"
C28	155.00'	30.34'	15.22'	30.29'	S65°50'49"W	11°12'54"
C29	1720.00'	606.94'	306.66'	603.80'	S61°20'43"W	20°13'05"
C30	1260.00'	122.36'	61.23'	122.31'	S37°58'26"W	05°33'51"
C31	1230.00'	98.03'	49.04'	98.01'	S41°53'34"W	04°34'00"



PLAT RECORDED  
 P.L. NO. 20 PAGE 89-89  
 14  
 28.01.2018 249  
 Clerk

**STONEHOUSE**  
 SUBDIVISION PLAT  
 OF  
 ORCHARD HILL  
 PHASE 2  
 BEING A SUBDIVISION  
 OF  
 STONEHOUSE LIMITED LIABILITY  
 COMPANY  
 STONEHOUSE DISTRICT, JAMES CITY COUNTY  
 DATE: 09/04/98 SCALE: 1"=50'  
 SHEET 3 OF 3