



STONEHOUSE SUBDIVISION PLAT OF ORCHARD HILL PHASE 2 BEING A SUBDIVISION OF STONEHOUSE LIMITED LIABILITY COMPANY

STONEHOUSE DISTRICT, JAMES CITY COUNTY DATE: 09/04/98 SCALE: 1"=50' SHEET 2 OF 3

LIMITED COMMON AREA PARCEL LCA 2 8,238.25 S.F. 0.1891 Ac.

TEMPORARY CART AND IRRIGATION EASEMENT DOCUMENT NO. 970009626 PLAT BOOK 66, PAGES 80-88

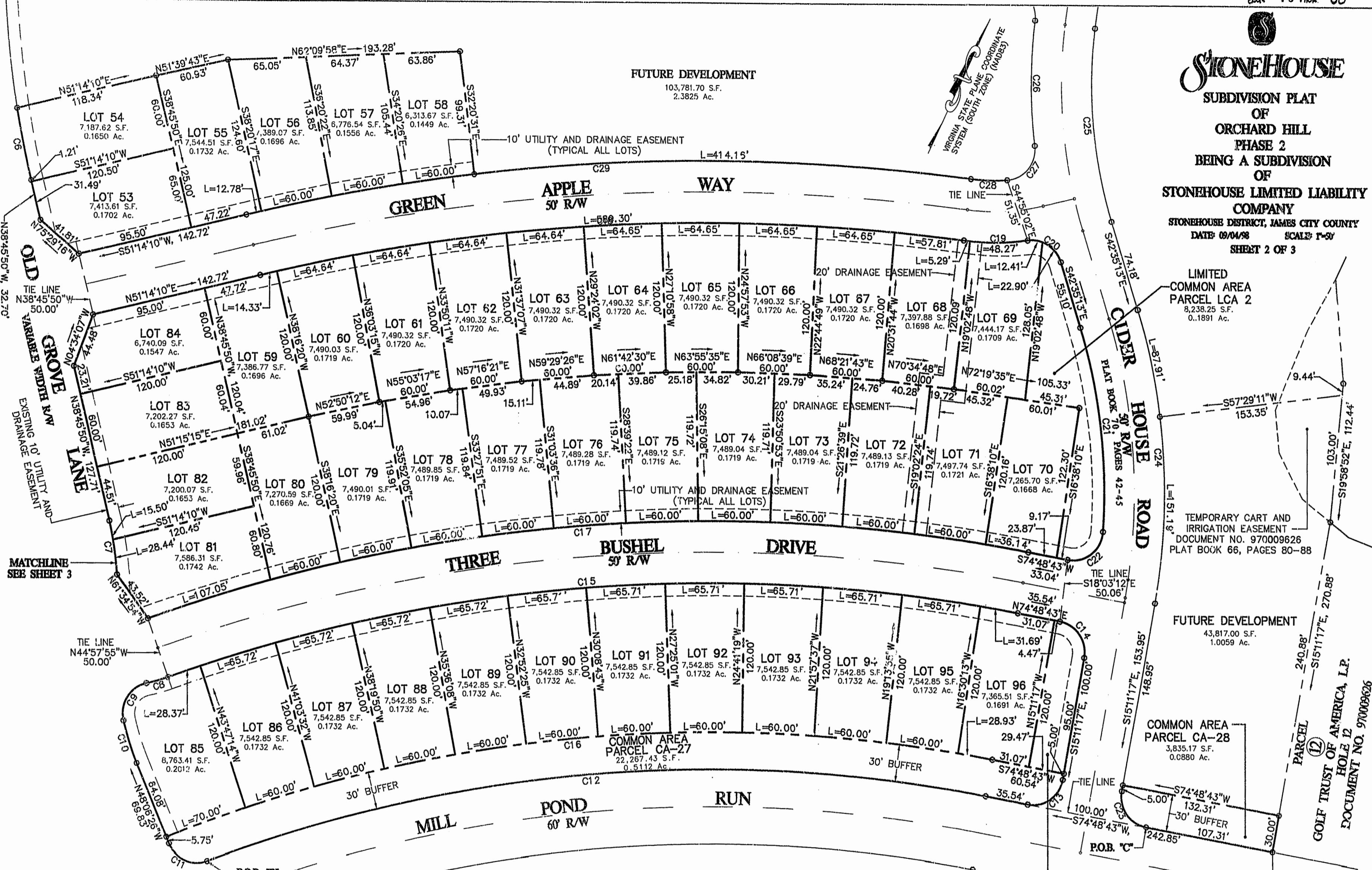
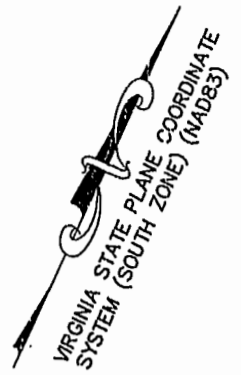
FUTURE DEVELOPMENT 43,817.00 S.F. 1.0059 Ac.

COMMON AREA PARCEL CA-28 3,835.17 S.F. 0.0880 Ac.

LIMITED COMMON AREA PARCEL LCA 3 3,402.27 S.F. 0.0781 Ac.

"NAD 83" COORDINATES N 3687049.2088 E 11973620.5513

FUTURE DEVELOPMENT 103,781.70 S.F. 2.3825 Ac.



PLAT NO. 20 DED IN AGE 82-89

Notarized 14 day of October 1998

