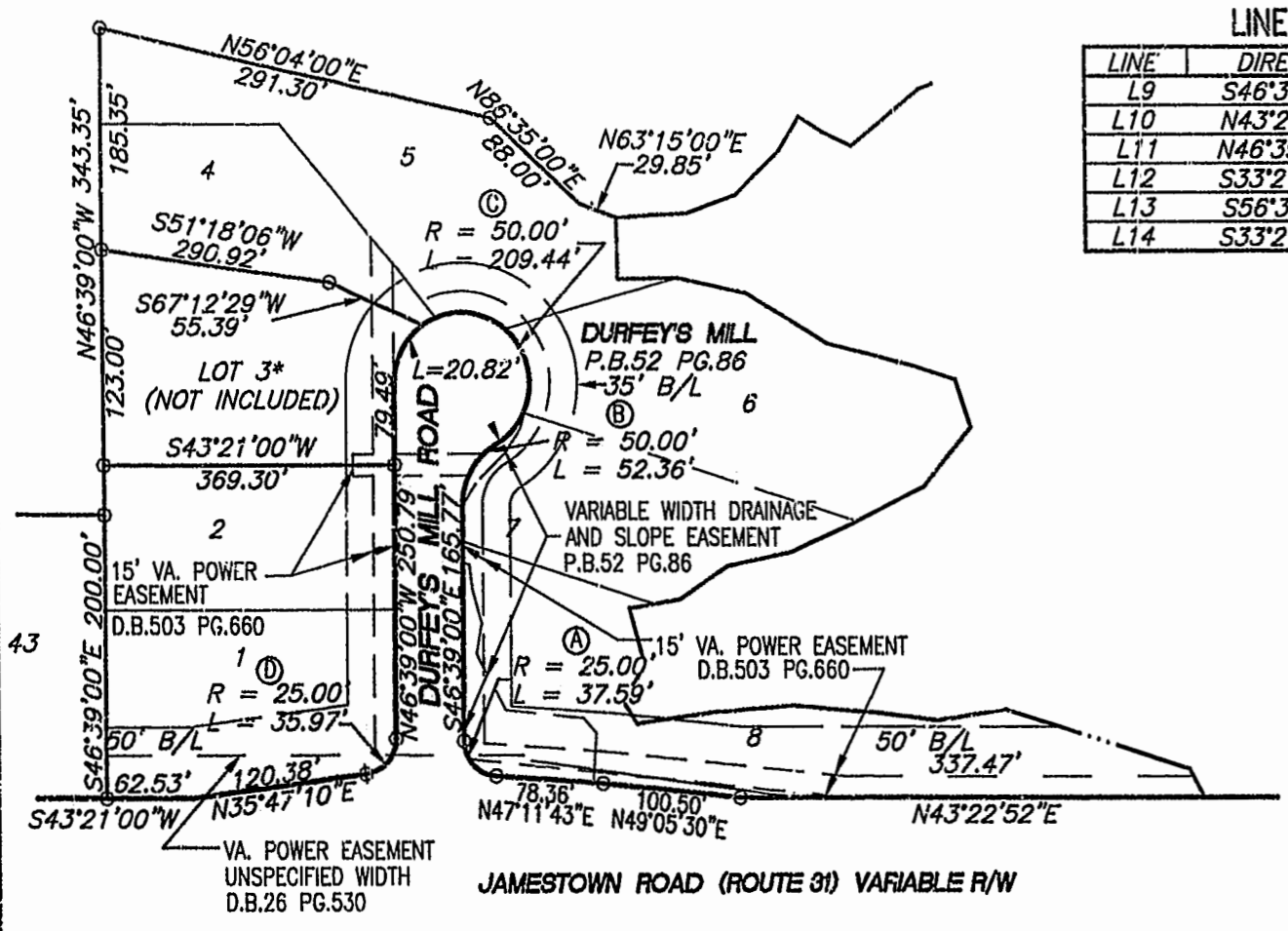


LINE TABLE

LINE	DIRECTION	DISTANCE
L9	S46°39'00"E	70.00'
L10	N43°21'00"E	50.00'
L11	N46°39'00"W	55.60'
L12	S33°21'00"W	26.05'
L13	S56°39'00"E	50.00'
L14	S33°21'00"W	79.80'

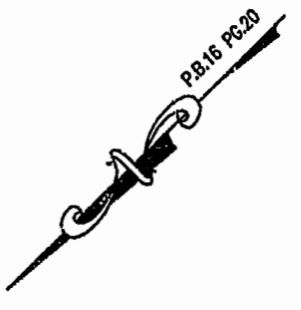
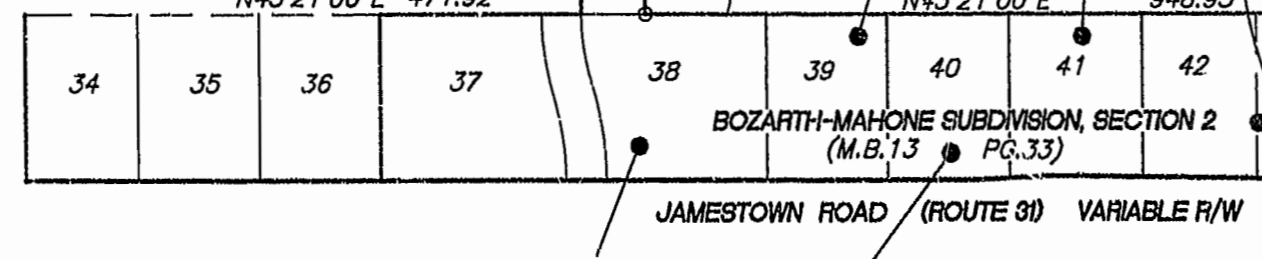
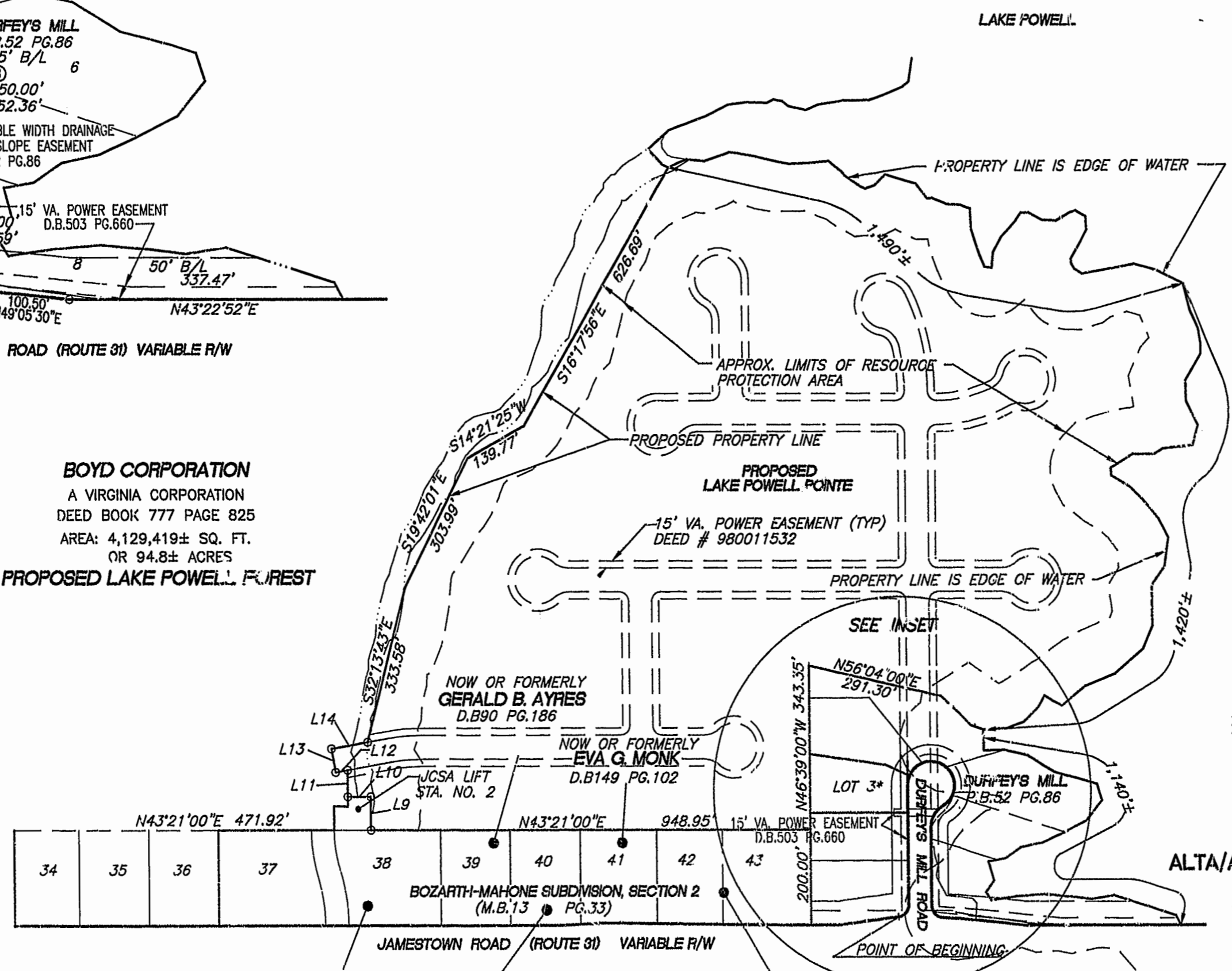
CURVE TABLE

CURVE	RADIUS	LENGTH	TANGENT	CHORD	BEARING	DELTA
A	25.00'	37.59'	23.38'	34.15'	S89°43'39"E	86°09'17"
B	50.00'	52.36'	28.87'	50.00'	S16°39'00"E	60°00'00"
C	50.00'	209.44'	86.60'	86.60'	N73°20'59"E	239°59'58"
D	25.00'	35.97'	21.90'	32.95'	N05°25'55"W	82°26'10"



INSET
N.T.S.

BOYD CORPORATION
A VIRGINIA CORPORATION
DEED BOOK 777 PAGE 825
AREA: 4,129,419± SQ. FT.
OR 94.8± ACRES
PROPOSED LAKE POWELL FOREST



LAKE POWELL
NOW OR FORMERLY
STANLEY H. POWELL, ET. AL
(FLORENCE P. ADSIT)
D.B.35 PG.439, 473



ALTA/ACSM LAND TITLE SURVEY
SHOWING
A PORTION OF PROPERTY
CONVEYED TO
BOYD CORPORATION
A VIRGINIA CORPORATION
IN DEED BOOK 777 PAGE 825
FROM

JOHN GRIER CONSTRUCTION COMPANY
FOR
PROPOSED LAKE POWELL POINTE

SCALE : 1" = 200' SEPT. 22, 1998



HORTON & DODD, P.C.
SURVEYORS, ENGINEERS & PLANNERS
CHESAPEAKE, VIRGINIA
(757) 487-4535

8:50 AM
Recorded 2 day of Oct. 1998
DOCUMENT # 980219039
W. G. Stewart Clerk

PLAT RECORDED IN
P.B. NO. 70 PAGE 77+78