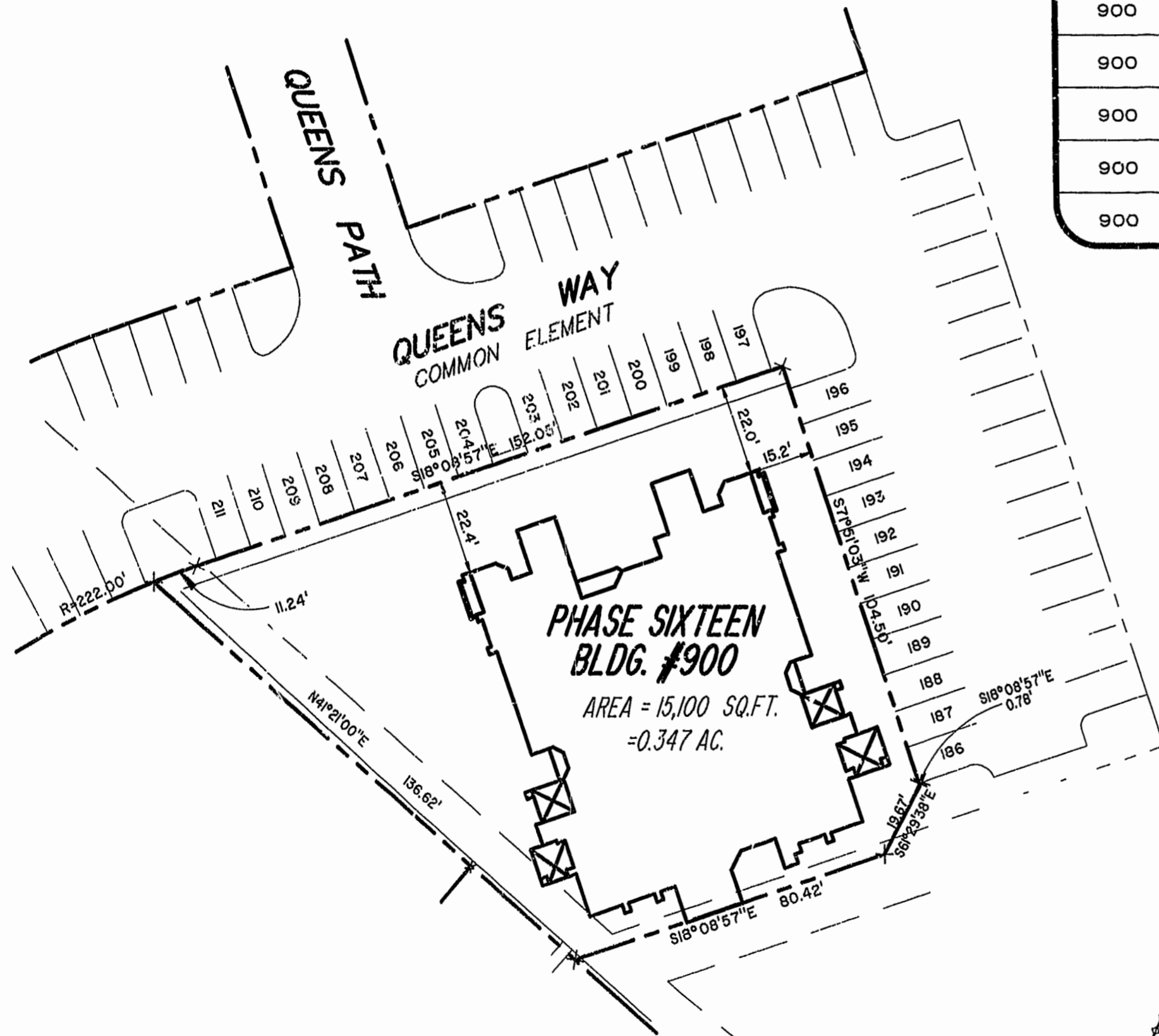
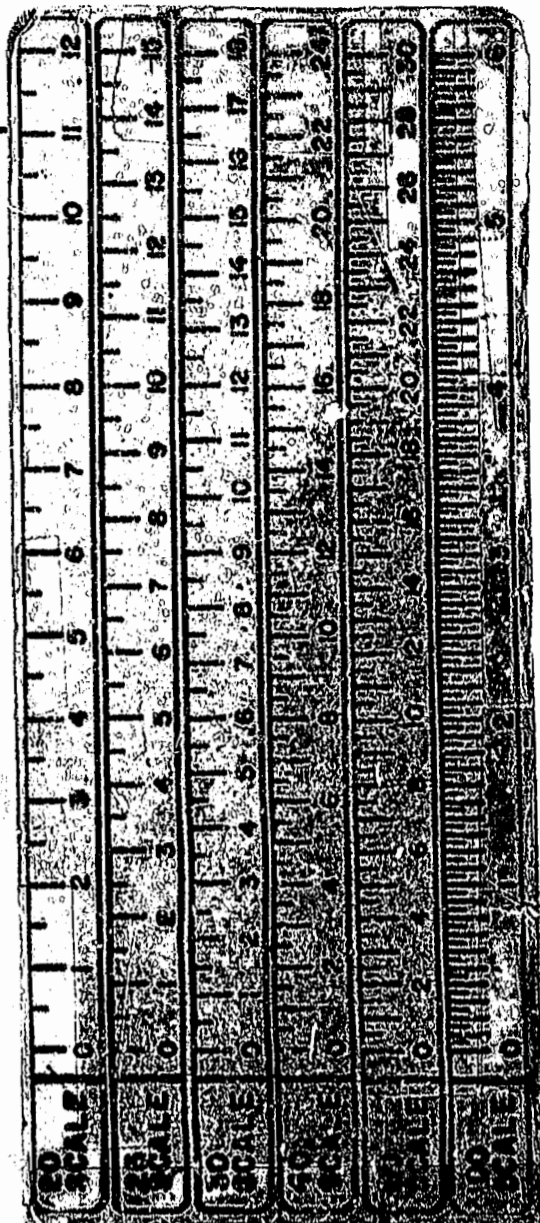




BLDG. NUMBER	UNIT NUMBER	UNIT TYPE	ADDRESS	PARKING SPACE NO.
900	9- 901	AR	90' QUEENS PATH	202
900	9- 902	B	902 QUEENS PATH	200
900	9- 903	A	903 QUEENS PATH	198
900	9- 904	E	904 QUEENS PATH	194
900	9- 905	C	905 QUEENS PATH	192
900	9- 906	D	906 QUEENS PATH	190
900	9- 907	F	907 QUEENS WAY	188
900	9- 908	DR	908 QUEENS WAY	186
900	9- 909	CR	909 QUEENS WAY	207
900	9- 910	ER	910 QUEENS PATH	205



**PHASE SIXTEEN  
BLDG. #900**

AREA = 15,100 SQ.FT.  
= 0.347 AC.

1:29 PM  
Recorded 25 *Sept.* 1998  
DOCUMENT # 98 02 B 469  
*Walter Simon* Clerk

PLAT RECORDED IN  
P.B. NO. 70 PAGE 72-75



**EXHIBIT # 1 PHASE SIXTEEN**  
LAFONTAINE CONDOMINIUMS  
AT  
WILLIAMSBURG CROSSING  
**PHASE SIXTEEN**

FOR  
UNIVERSITY SQUARE ASSOCIATES  
JAMESTOWN DISTRICT JAMES CITY COUNTY, VIRGINIA

Hassell & Folkes, P.C. Engineers Surveyors Planners Chesapeake, VA 23320 (757) 547-9531	SIZE C	CONTRACT NO.	DISK/BOX 49E/15	FILENAME LF-P16.DWG	REV.
SCALE: 1" = 25'			DATE: 09/18/98		SHEET 4 of 4