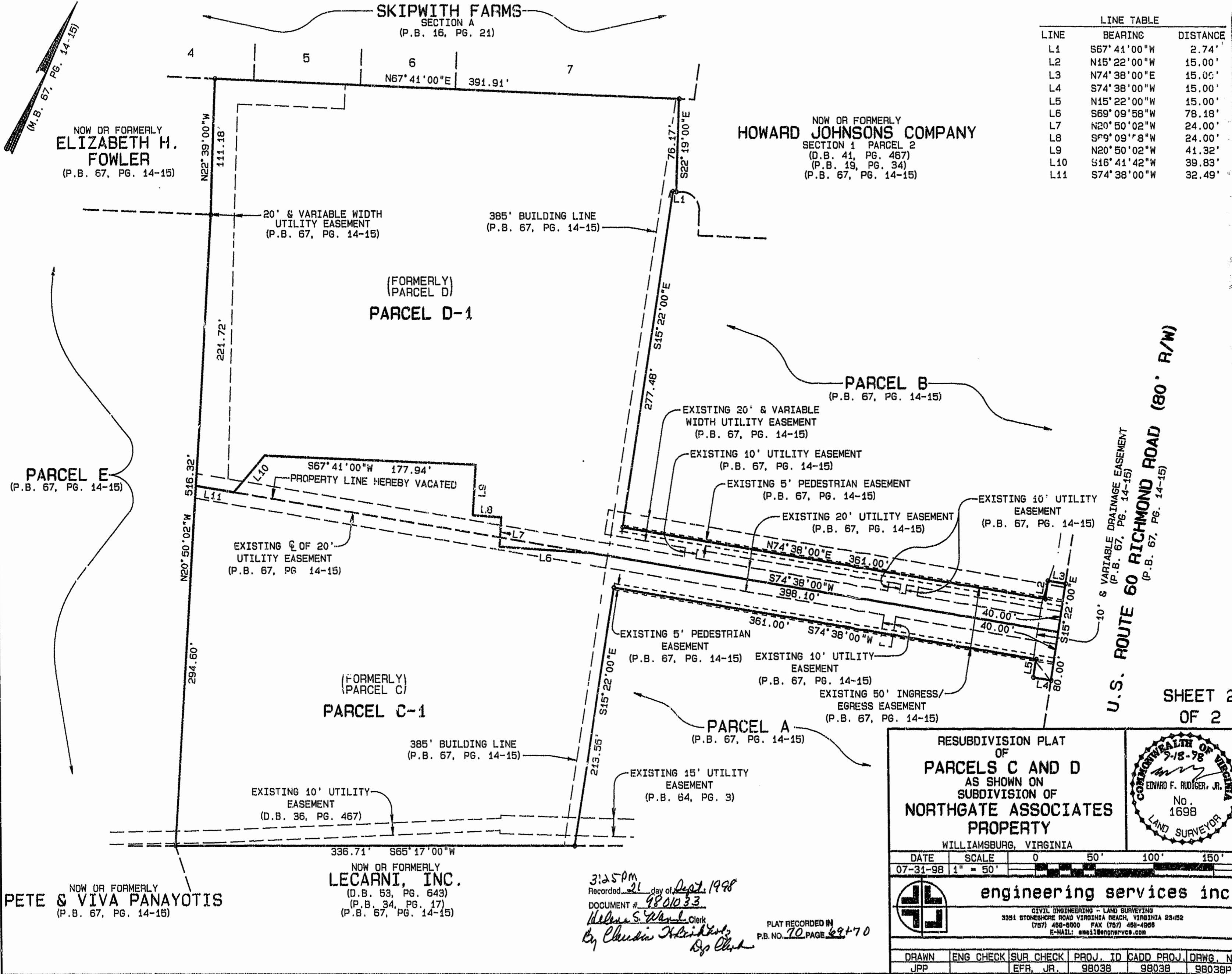


SKIPWITH FARMS
SECTION A
(P.B. 16, PG. 24)

LINE	BEARING	DISTANCE
L1	S67° 41' 00" W	2.74'
L2	N15° 22' 00" W	15.00'
L3	N74° 38' 00" E	15.00'
L4	S74° 38' 00" W	15.00'
L5	N15° 22' 00" W	15.00'
L6	S69° 09' 58" W	78.18'
L7	N20° 50' 02" W	24.00'
L8	S79° 09' 7" W	24.00'
L9	N20° 50' 02" W	41.32'
L10	S16° 41' 42" W	39.83'
L11	S74° 38' 00" W	32.49'



U.S. ROUTE 60 RICHMOND ROAD (80' R/W)
10' & VARIABLE DRAINAGE EASEMENT (P.B. 67, PG. 14-15)

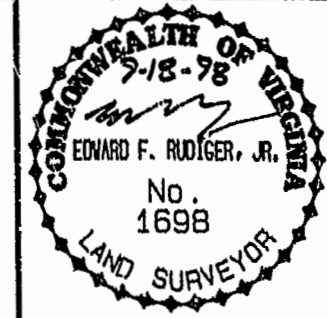
SHEET 2 OF 2

RESUBDIVISION PLAT OF PARCELS C AND D AS SHOWN ON SUBDIVISION OF NORTHGATE ASSOCIATES PROPERTY WILLIAMSBURG, VIRGINIA

DATE 07-31-98 SCALE 1" = 50'

engineering services inc
CIVIL ENGINEERING - LAND SURVEYING
3351 STONEHOPK ROAD VIRGINIA BEACH, VIRGINIA 23452
(757) 488-8800 FAX (757) 488-8868 E-MAIL: es@es1engineering.com

DRAWN	ENG CHECK	SUR CHECK	PROJ. ID	CADD PROJ.	DRWG. NO.
JPP		EFR, JR.	98038	98038	98038P2



3:25 PM
Recorded 21 day of Sept. 1998
DOCUMENT # 9801033
Melissa S. [Signature] Clerk
By Claudia [Signature] By Clerk
PLAT RECORDED IN P.B. NO. 70 PAGE 69+70

NOW OR FORMERLY PETE & VIVA PANAYOTIS (P.B. 67, PG. 14-15)

NOW OR FORMERLY LECARNI, INC. (D.B. 53, PG. 643) (P.B. 34, PG. 17) (P.B. 67, PG. 14-15)

NOW OR FORMERLY ELIZABETH H. FOWLER (P.B. 67, PG. 14-15)

NOW OR FORMERLY HOWARD JOHNSONS COMPANY SECTION 1 PARCEL 2 (D.B. 41, PG. 467) (P.B. 19, PG. 34) (P.B. 67, PG. 14-15)