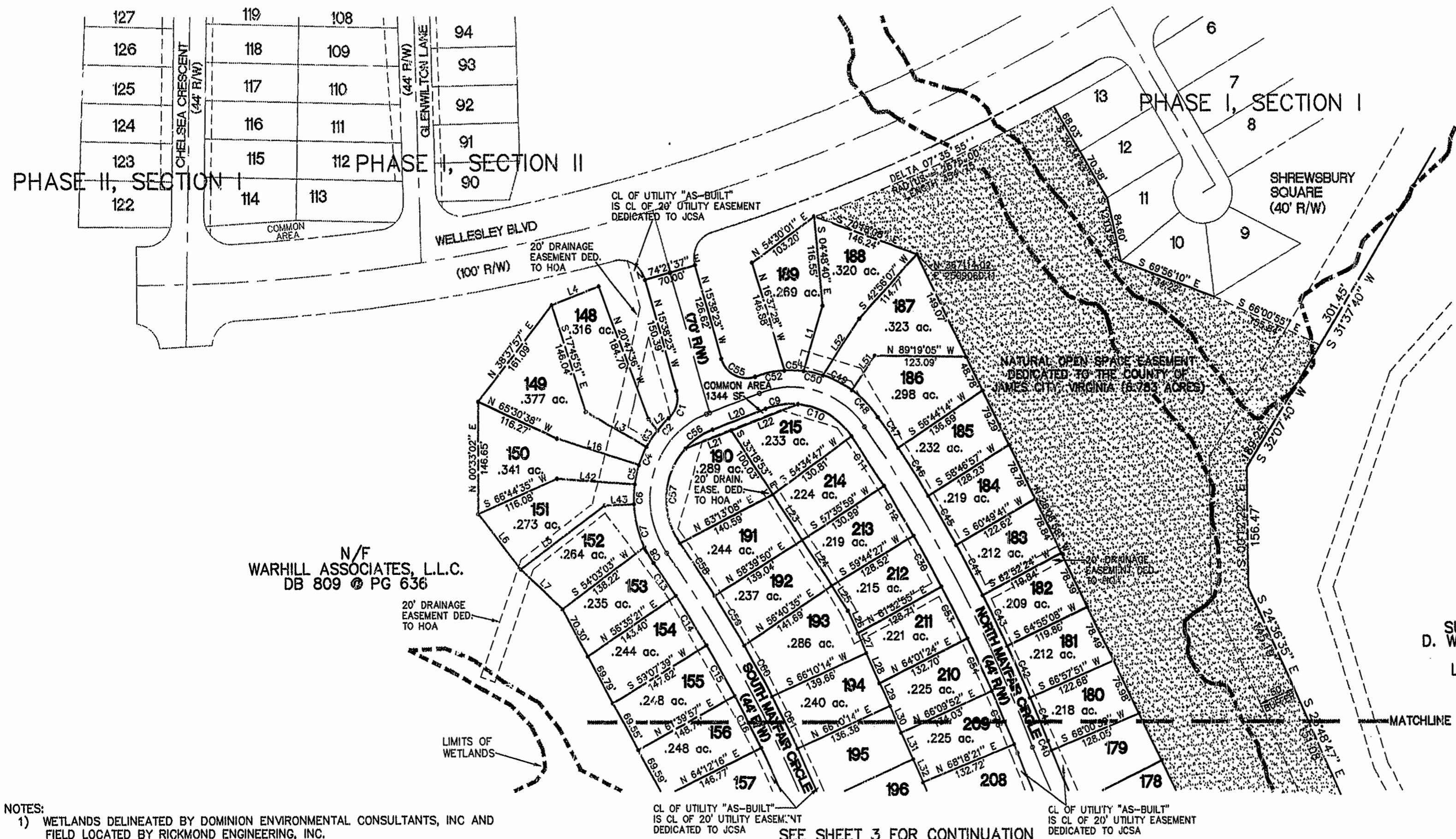
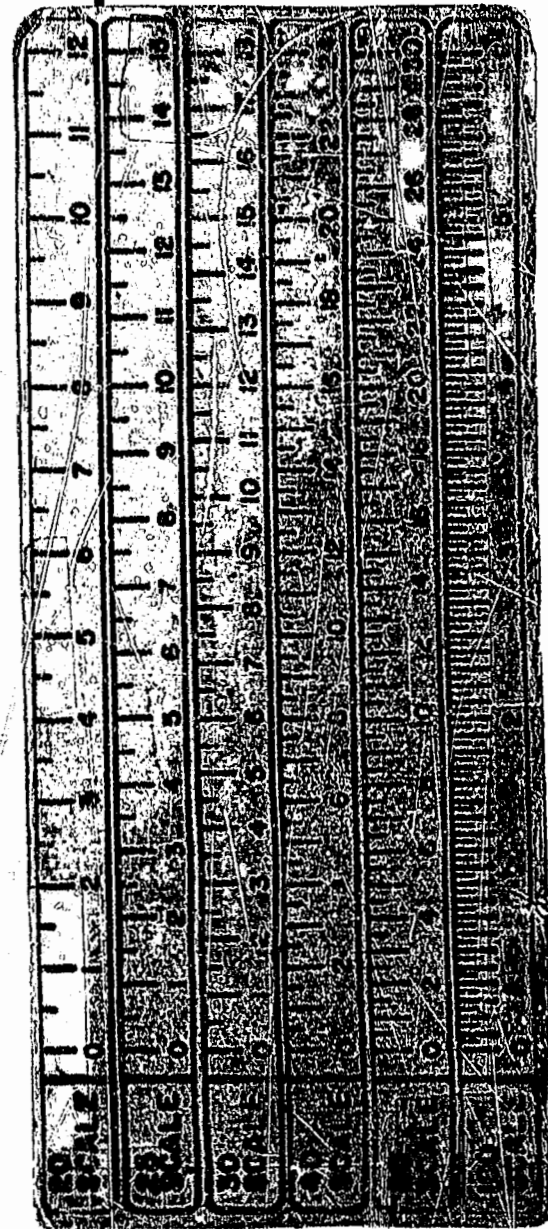


# THE VILLAGES AT WESTMINSTER PHASE III

BERKELEY DISTRICT  
JAMES CITY COUNTY, VIRGINIA  
DATE: JUNE 1, 1998 SCALE: 1"=100'

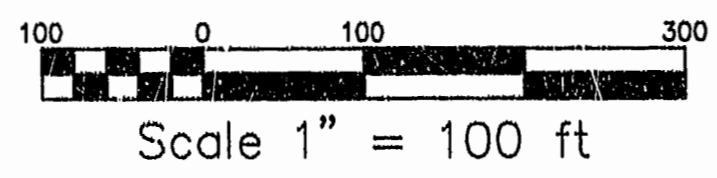


N/F  
WARHILL ASSOCIATES, L.L.C.  
DB 809 @ PG 636

SUBDIVISION OF  
D. WARREN MARSTON  
PB 6 PG 29  
LOTS "A" - "P"

- NOTES:
- 1) WETLANDS DELINEATED BY DOMINION ENVIRONMENTAL CONSULTANTS, INC AND FIELD LOCATED BY RICHMOND ENGINEERING, INC.
  - 2) MONUMENTS WILL BE INSTALLED AS REQUIRED IN SECTION 19-34 THROUGH 19-36 OF THE SUBDIVISION ORDINANCE. AT LEAST TWO NEW OR EXISTING MONUMENTS AT EXTERIOR SUBDIVISION BOUNDARIES SHALL BE REFERENCED TO THE COUNTY GEODETIC CONTROL NETWORK.
  - 3) IN ACCORDANCE WITH SECTION 19-33 OF THE SUBDIVISION ORDINANCE, ALL UTILITIES SHALL BE PLACED UNDERGROUND.
  - 4) NEW MONUMENTS AT THE SUBDIVISION BOUNDARY ARE REFERENCED TO JAMES CITY COUNTY MONUMENT STATION NO. 308 (NAD27).
  - 5) ANY OLD WELLS ON SITE SHALL BE PROPERLY ABANDONED ACCORDING TO STATE PRIVATE WELL REGULATIONS.
  - 6) WETLANDS & LAND WITHIN THE RESOURCE PROTECTION AREAS SHALL REMAIN IN A NATURAL STATE EXCEPT FOR THOSE ACTIVITIES PERMITTED BY SECTION 23B-9C(1) OF THE JAMES CITY COUNTY CODE.
  - 7) UNLESS OTHERWISE NOTED, ALL DRAINAGE EASEMENTS DESIGNATED ON THIS PLAN SHALL BE PRIVATE.
  - 8) NATURAL OPEN SPACE EASEMENTS SHALL REMAIN IN A NATURAL STATE EXCEPT FOR THOSE ACTIVITIES REFERENCED ON THE DEED OF EASEMENT.

PLAN RECORDED IN  
P.B. NO. 70, PAGE 64-67



SEE SHEET 3 FOR CONTINUATION

SETBACKS:  
FRONT 50' FROM CENTERLINE OF ROAD  
SIDE 5'  
REAR 5'

1:52 PM  
Recorded 18 day of Sept 1998  
DOCUMENT # 98017848  
Clerk

**Rickmond Engineering, Inc.**

1643-C Merrimac Trail  
Williamsburg VA 23185  
(757)229-1776 or 898-4149

Civil Engineering  
Environmental Engineering  
Land Surveying

SHEET 2 OF 4  
97173P.DWG