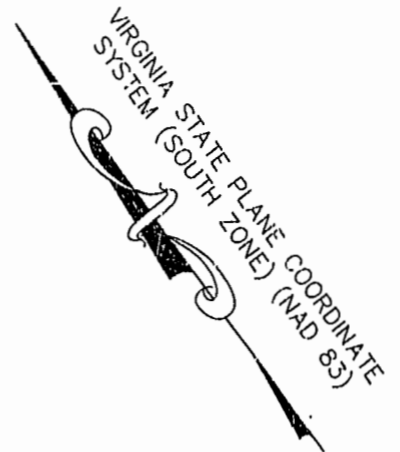
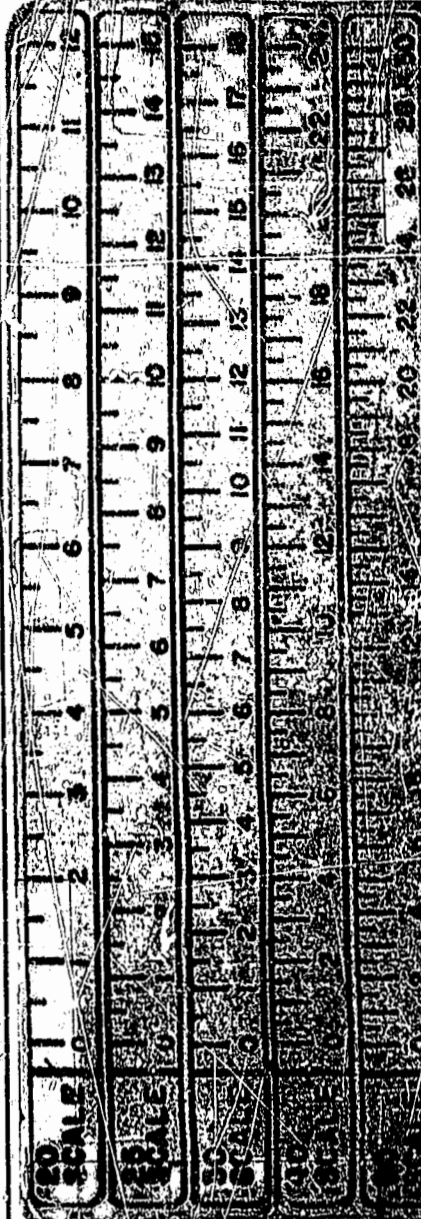


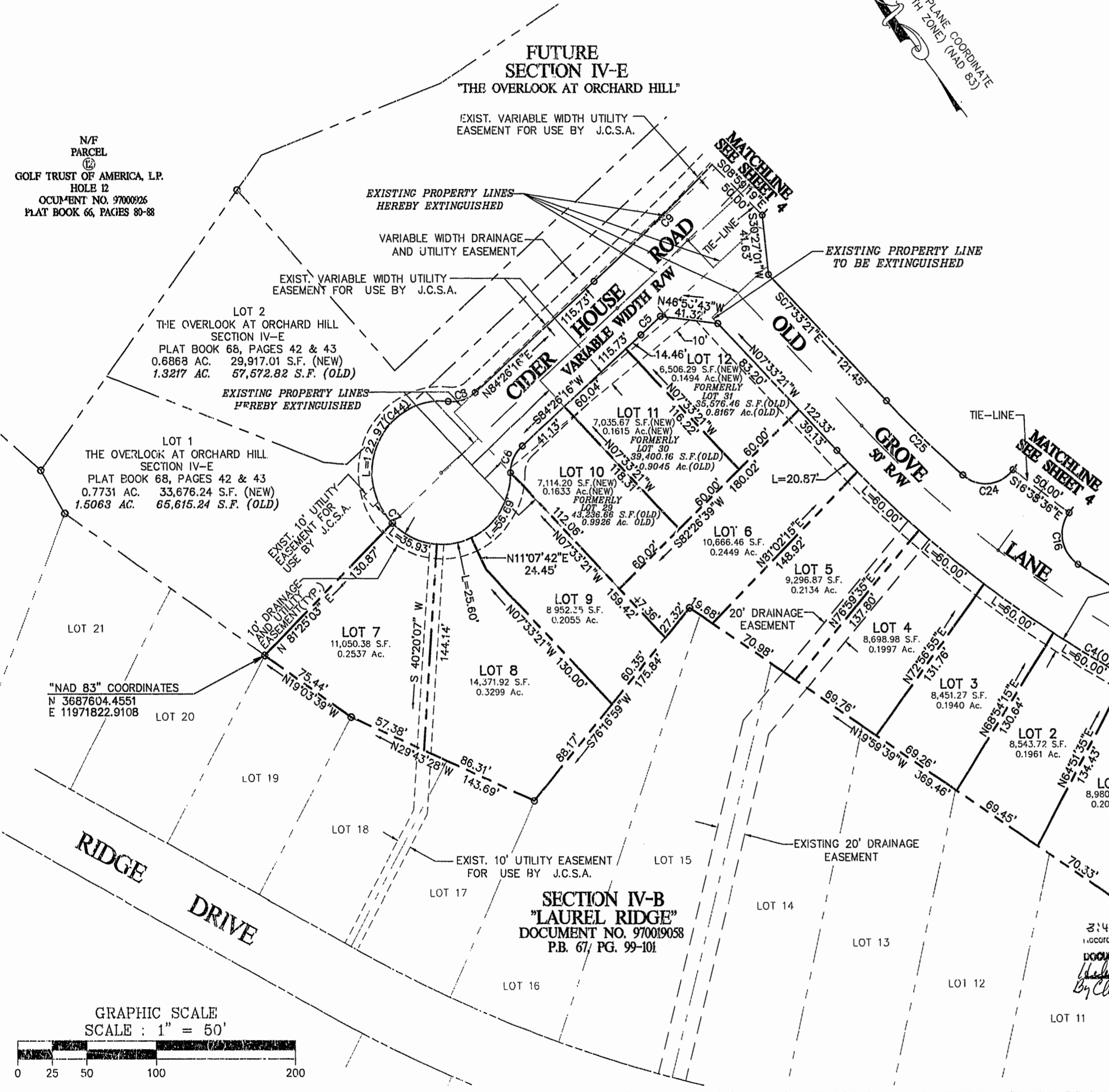
NOTES: EXISTING UTILITY EASEMENTS WITHIN RIGHT-OF-WAY ARE HERE BY ABANDONED
 ALL ITALICS TEXT REFERS TO EXTINGUISHED PROPERTY LINES



CURVE TABLE						
CURVE	RADIUS	LENGTH	TANGENT	CHORD	BEARING	DELTA
C1	25.00'	38.27'	24.02'	34.64'	N04°14'56"W	87°43'00"
C2	265.00'	108.70'	55.13'	107.94'	S36°21'21"E	23°30'10"
C3	215.00'	53.13'	26.70'	53.00'	N31°41'03"W	14°09'34"
C4	850.00'	462.98'	237.39'	457.28'	S23°09'35"E	31°12'28"
C5	2025.00'	19.23'	9.62'	19.23'	N84°09'56"E	00°32'39"
C6	25.00'	21.03'	11.18'	20.41'	S40°20'34"W	48°11'23"
C7	50.00'	241.19'	44.72'	66.67'	S05°33'44"E	276°22'46"
C8	25.00'	21.03'	11.18'	20.41'	S71°28'03"E	48°11'23"
C9	1975.00'	624.32'	314.79'	621.73'	N75°22'54"E	18°06'43"
C10	300.00'	516.27'	348.78'	454.88'	N64°22'28"W	98°35'58"
C11	25.00'	37.75'	23.52'	34.26'	N61°48'59"W	86°31'00"
C12	975.00'	146.34'	73.31'	146.20'	S70°37'32"W	08°35'58"
C13	1025.00'	207.86'	104.29'	207.50'	N72°08'07"E	11°37'08"
C14	975.00'	78.07'	39.06'	78.05'	S75°39'02"W	04°35'17"
C15	25.00'	40.88'	26.67'	36.48'	S26°30'26"W	93°41'57"
C16	800.00'	257.21'	129.72'	256.10'	S29°33'11"E	15°25'17"
C17	265.00'	43.94'	22.02'	43.89'	N34°00'48"W	09°30'04"
C18	145.00'	18.57'	9.30'	18.56'	N48°42'13"E	07°20'16"
C19	25.00'	39.65'	25.38'	35.62'	S06°56'12"W	90°52'19"
C20	215.00'	36.05'	18.07'	36.01'	S43°18'12"E	09°36'28"
C21	25.00'	38.27'	24.02'	34.64'	N88°02'04"E	87°43'00"
C22	1230.00'	98.03'	49.04'	98.01'	S41°53'34"W	04°34'00"
C23	25.00'	40.88'	26.67'	36.48'	S59°47'38"E	93°41'57"
C24	800.00'	75.24'	37.65'	75.21'	S10°15'00"E	05°23'18"
C25	2025.00'	519.03'	260.95'	517.61'	N73°40'07"E	14°41'08"
C26	250.00'	383.52'	240.99'	347.00'	N69°43'34"W	87°53'47"
C27	25.00'	43.94'	30.17'	38.50'	N24°54'25"E	100°42'11"
C28	1025.00'	153.84'	77.07'	153.70'	S70°37'32"W	08°35'58"
C29	975.00'	153.84'	77.07'	153.70'	N72°08'07"E	11°37'08"
C30	1025.00'	82.08'	41.06'	82.06'	S75°39'02"W	04°35'17"
C31	375.00'	180.07'	91.80'	178.34'	S28°49'51"E	27°30'44"
C32	500.00'	239.10'	121.88'	236.83'	N28°53'15"W	27°23'56"
C33	25.00'	39.27'	25.00'	35.36'	S60°11'17"E	90°00'00"
C34	25.00'	39.27'	25.00'	35.36'	N29°48'43"E	90°00'00"
C35	25.00'	39.27'	25.00'	35.36'	N60°11'17"W	90°00'00"
C36	25.00'	41.98'	27.87'	37.22'	N26°42'06"E	96°13'15"
C37	450.00'	166.33'	84.13'	165.39'	N31°59'52"W	21°10'42"
C38	25.00'	35.31'	21.33'	32.45'	N83°03'04"W	80°55'42"
C39	25.00'	40.33'	26.08'	36.09'	N14°01'48"E	92°25'07"
C40	425.00'	101.04'	50.76'	100.80'	S25°22'07"E	13°37'15"
C41	1230.00'	657.68'	336.90'	649.87'	S59°29'39"W	30°38'09"
C42	850.00'	142.11'	71.22'	141.94'	N33°58'27"W	09°34'45"
C43	50.00'	122.97'	140.85'	94.24'	N62°10'20"E	140°54'38"
C44	1025.00'	158.72'	79.52'	158.56'	S70°45'42"W	08°52'19"
C45	800.00'	136.38'	68.36'	136.22'	S33°52'48"E	09°46'04"
C46						



N/F PARCEL
 GOLF TRUST OF AMERICA, L.P.
 HOLE 12
 DOCUMENT NO. 97000926
 PLAT BOOK 66, PAGES 80-88



SUBDIVISION PLAT OF ORCHARD HILL PHASE 1 AND BOUNDARY ADJUSTMENTS OF 3 LOTS IN "ORCHARD HILL" SEC. IV-D AND 2 LOTS IN "THE OVERLOOK AT ORCHARD HILL" SEC. IV-E BEING A SUBDIVISION OF STONEHOUSE LIMITED LIABILITY COMPANY
 STONEHOUSE DISTRICT, JAMES CITY COUNTY
 DATE: 07/08/98 SCALE: 1"=50'
 SHEET 3 OF 4

3:44 PM
 recorded 28 day of Aug 1998
 DOCUMENT # 980216427
 By *Charles H. ...* Clerk

