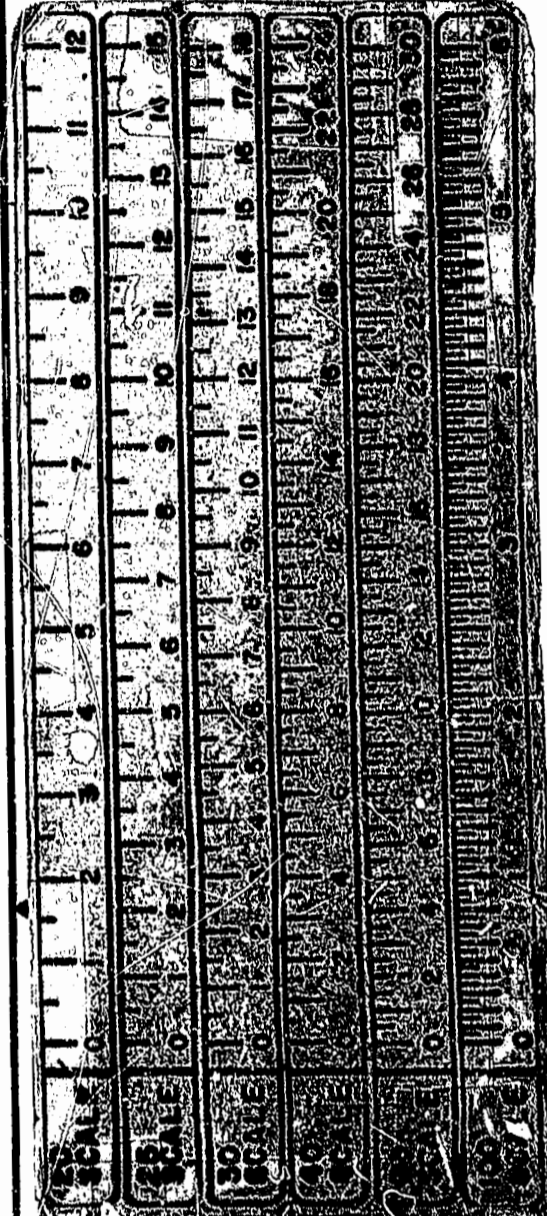
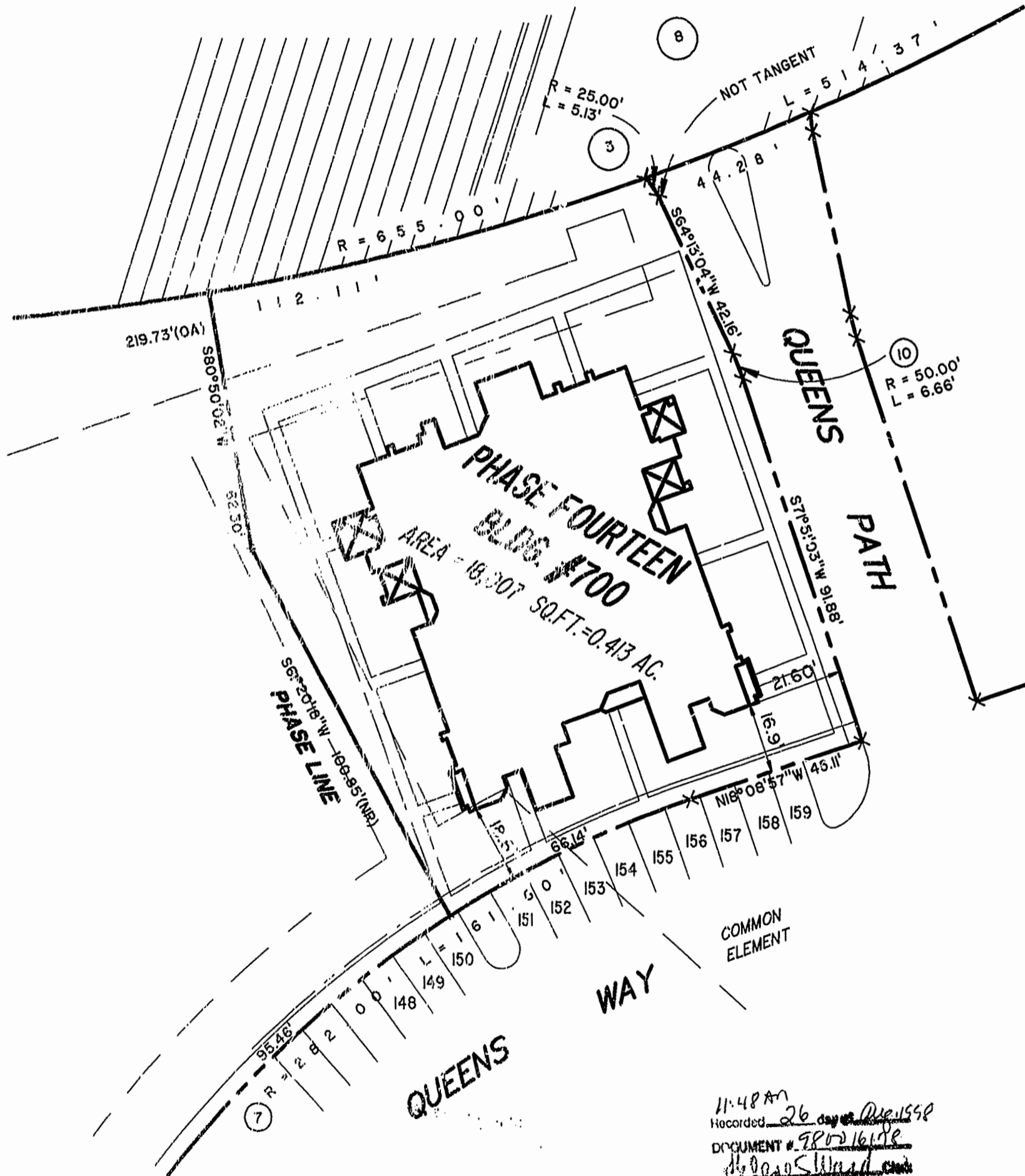


BLDG. NUMBER	UNIT NUMBER	UNIT TYPE	ADDRESS	PARKING SPACE NO.
700	7-1001	AR	701 QUEENS PATH	157
700	7-1002	B	702 QUEENS PATH	155
700	7-1003	A	703 QUEENS PATH	153
700	7-1004	E	704 QUEENS PATH	152
700	7-1005	C	705 QUEENS PATH	151
700	7-1006	D	706 QUEENS PATH	150
700	7-1007	F	707 QUEENS WAY	149
700	7-1008	DR	708 QUEENS WAY	148
700	7-1009	CR	709 QUEENS WAY	159
700	7-1010	ER	710 QUEENS PATH	158



11:48 AM
Recorded 26 days after 1558
DOCUMENT # 980216198
By [Signature]



EXHIBIT # 1 PHASE FOURTEEN
LAFONTAINE CONDOMINIUMS
AT
WILLIAMSBURG CROSSING
PHASE FOURTEEN
FOR
UNIVERSITY SQUARE ASSOCIATES
JAMESTOWN DISTRICT JAMES CITY COUNTY, VIRGINIA

Hassell & Folkes, P.C. Engineers Surveyors Planners Chesapeake, VA, 23320 (757)547-9531	SIZE C	CONTRACT NO.	DISK/BOX 49D/15	FILENAME LF-P14.DWG	REV.
SCALE: 1" = 25'		DATE: 08/17/98		SHEET 4 of 4	