

PARCEL 8
(P.B. 52, PG. 79)
AREA = 1.23 ACRES

PARCEL 9
(P.B. 52, PG. 78)

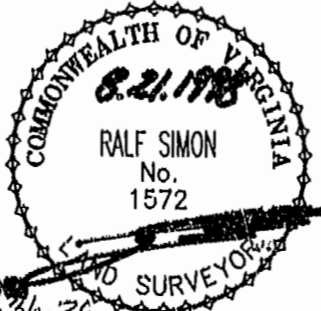
EASEMENT FOR
INGRESS/EGRESS
(D.B. 53, PG. 46)

JOHN TYLER HIGHWAY
STATE ROUTE NO. 5

CAROLINA BLVD.
(60' R/W)

N/F
LOT 1
JAMES CITY COUNTY
(D.B. 216, PG. 268)
(P.B. 36, PG. 83)

N/F
JAMES CITY COUNTY
(D.B. 180, PG. 465)



11-48
Recorded 26
DOCUMENT # 980116198
Mike S. Williams

RECORDED
70 PAGE 37

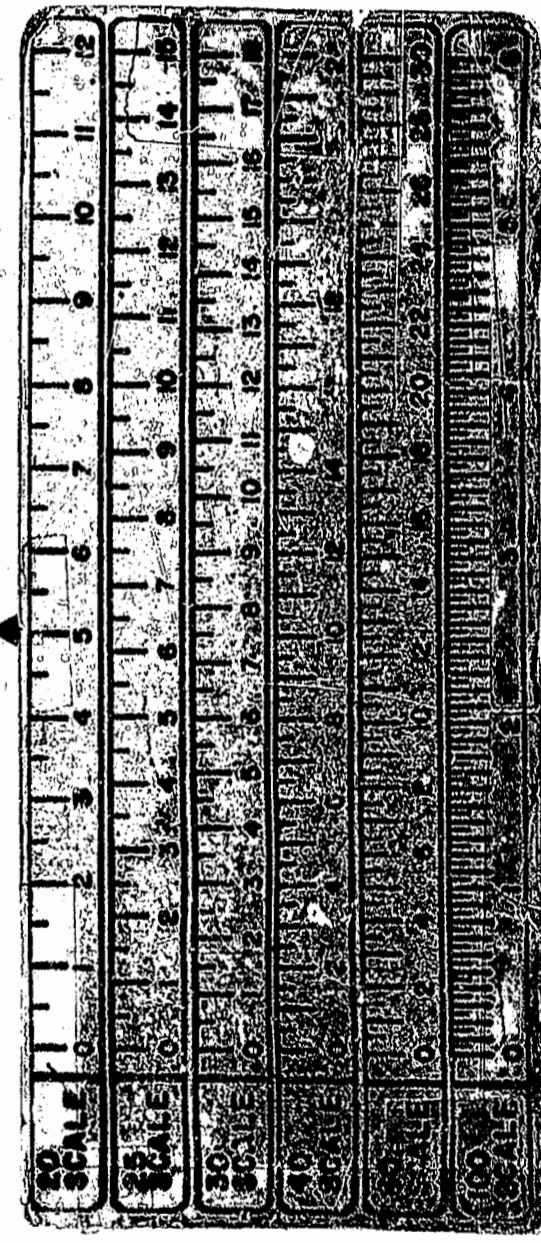
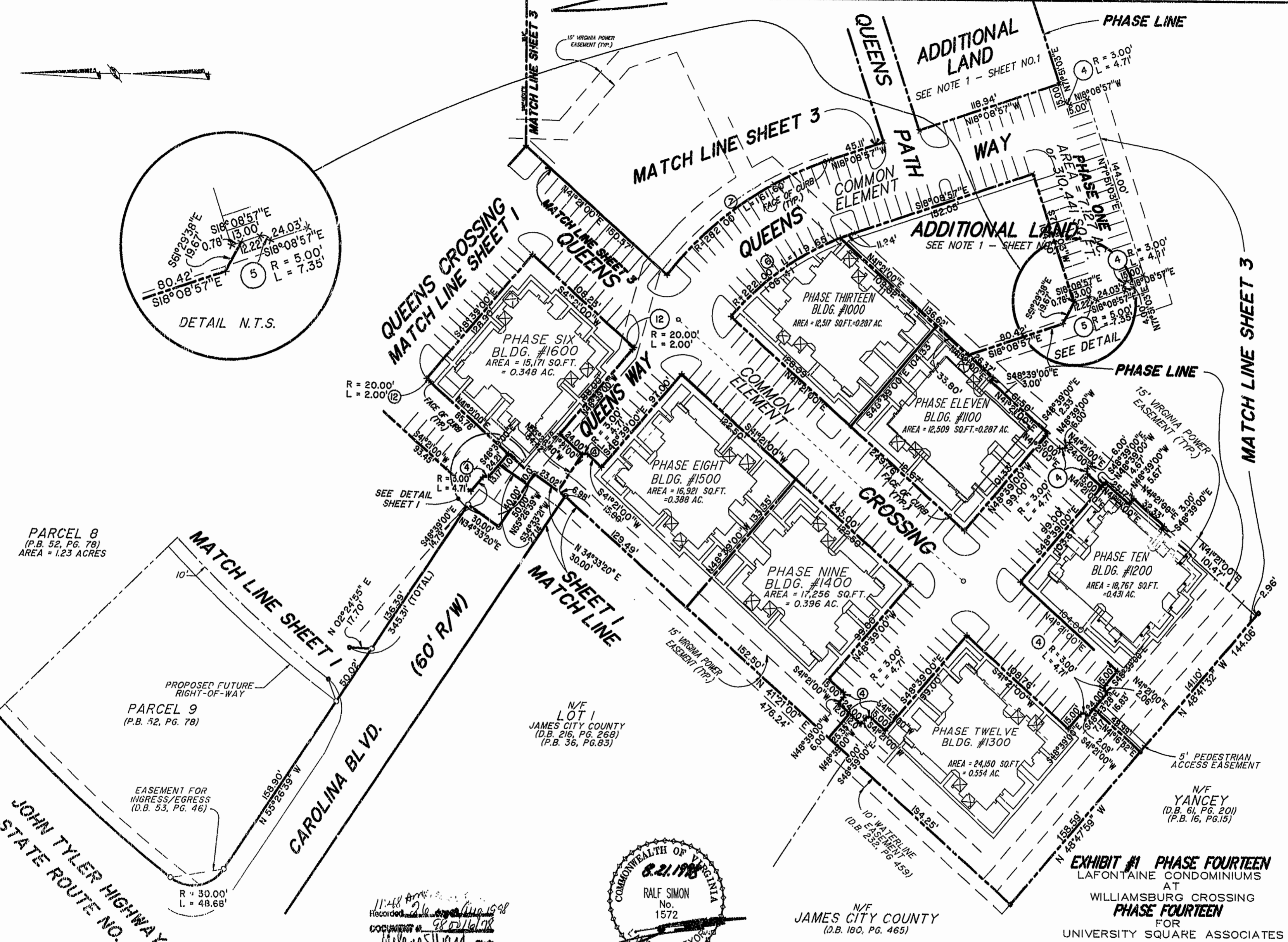


EXHIBIT #1 PHASE FOURTEEN
LAFONTAINE CONDOMINIUMS
AT
WILLIAMSBURG CROSSING
FOR
UNIVERSITY SQUARE ASSOCIATES
JAMESTOWN DISTRICT JAMES CITY COUNTY, VIRGINIA

Hassell & Folkes, P.C. Engineers Surveyors Planners Chesapeake, VA. 23320 (757)547-9531	SIZE CONTRACT NO C	DISK/BOX 49D/15	FILENAME LF-P14.DWG	REV. REV.
SCALE: 1" = 50'	DATE: 08/17/98	SHEET 2 of 4		