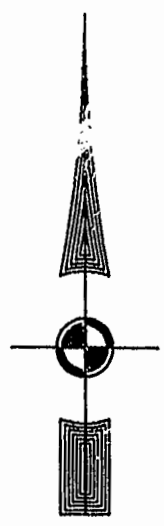


EXIST. 20' JAMES CITY COUNTY SERVICE AUTHORITY SAN. SEWER EASEMENT AS SHOWN IN AS-BUILT LOCATION. D.B. 141 - PG. 388



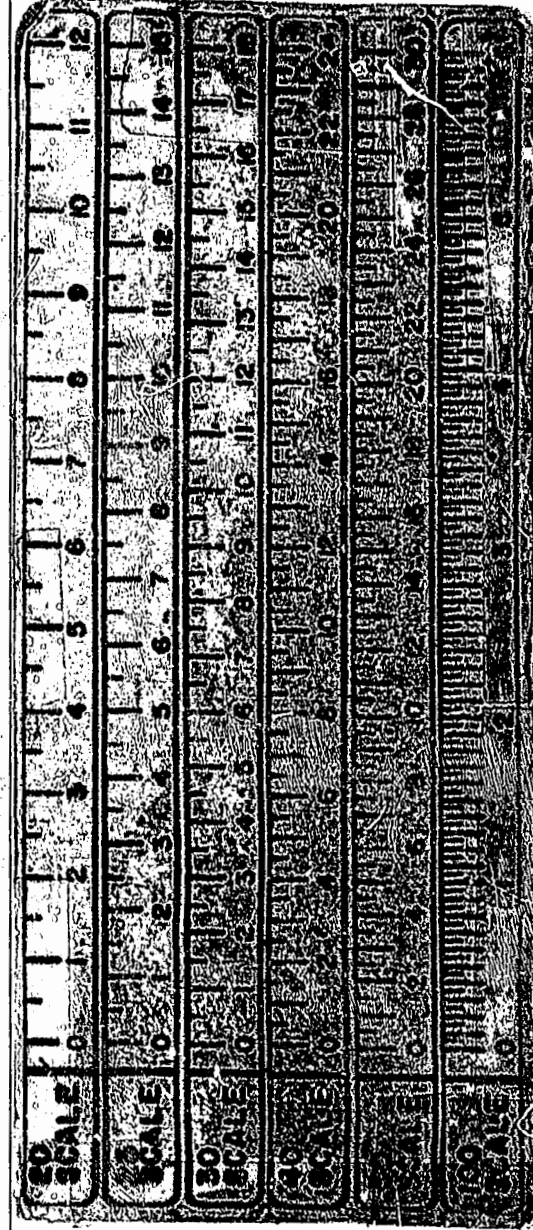
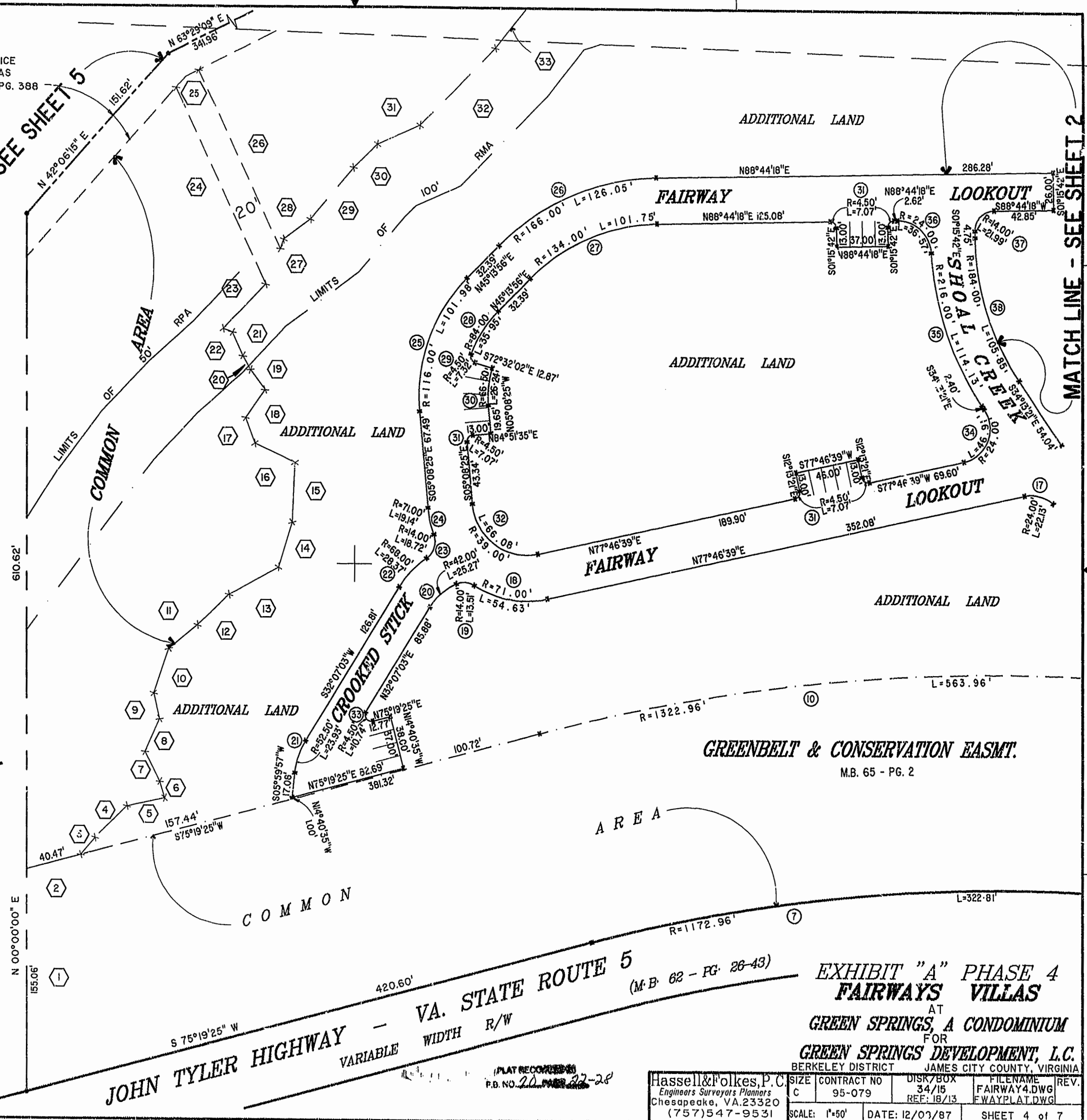
MATCH LINE - SEE SHEET 5

MATCH LINE - SEE SHEET 2

46-1-01-0-0001 "GREENSPRINGS PLANTATION" (DB 322, PG 254)



Recorded 28 day of July 1998 DOCUMENT # 981014002



JOHN TYLER HIGHWAY - VA. STATE ROUTE 5 (M.B. 62 - PG. 26-43) VARIABLE WIDTH R/W

EXHIBIT "A" PHASE 4 FAIRWAYS VILLAS AT GREEN SPRINGS, A CONDOMINIUM FOR GREEN SPRINGS DEVELOPMENT, L.C. BERKELEY DISTRICT JAMES CITY COUNTY, VIRGINIA

Hassell & Folkes, P.C. Engineers Surveyors Planners Chesapeake, VA. 23320 (757) 547-9531	SIZE	CONTRACT NO	DISK/BOX	FILENAME	REV.
	C	95-079	34/15 REF: 18/13	FAIRWAY4.DWG FWAYPLAT.DWG	
SCALE: 1"=50'		DATE: 12/03/87		SHEET 4 of 7	

PLAT RECORDED P.B. NO. 20 PAGE 22-28