

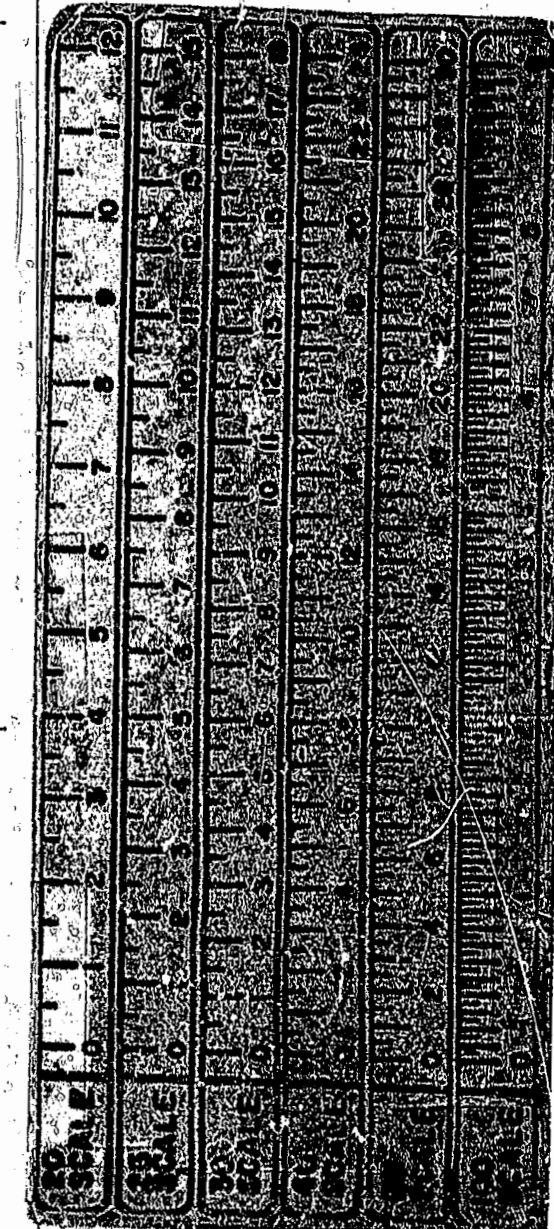
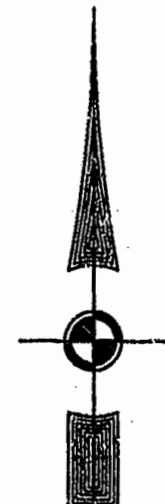
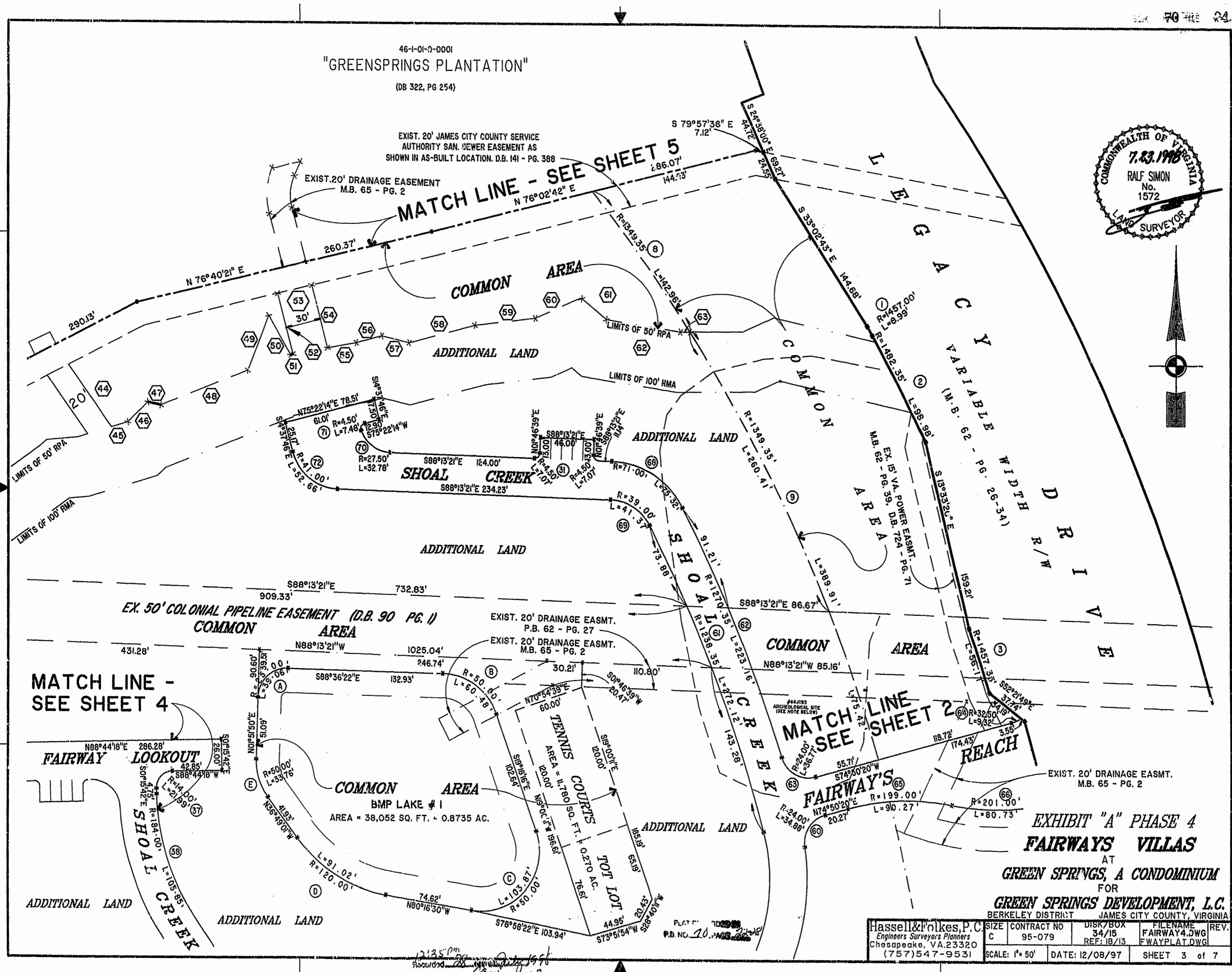
46-1-01-0-0001  
 "GREENSPRINGS PLANTATION"  
 (DB 322, PG 254)

EXIST. 20' JAMES CITY COUNTY SERVICE  
 AUTHORITY SAN. SEWER EASEMENT AS  
 SHOWN IN AS-BUILT LOCATION, D.B. 141 - PG. 388

EXIST. 20' DRAINAGE EASEMENT  
 M.B. 65 - PG. 2



**MATCH LINE - SEE SHEET 5**



**MATCH LINE - SEE SHEET 4**

**MATCH LINE - SEE SHEET 2**

**EXHIBIT "A" PHASE 4  
 FAIRWAYS VILLAS  
 AT  
 GREEN SPRINGS, A CONDOMINIUM  
 FOR  
 GREEN SPRINGS DEVELOPMENT, L.C.  
 BERKELEY DISTRICT JAMES CITY COUNTY, VIRGINIA**

Hassell & Folkes, P.C. Engineers Surveyors Planners Chesapeake, VA 23320 (757) 547-9531	SIZE	CONTRACT NO	DISK/BOX	FILENAME	REV.
	C	95-079	34/15	FAIRWAY4.DWG	
	SCALE: 1" = 50'	DATE: 12/08/97	REF: 18/13	FWAYPLAT.DWG	
					SHEET 3 of 7

12135 PM  
 DOCUMENT # 49001 12/10/97