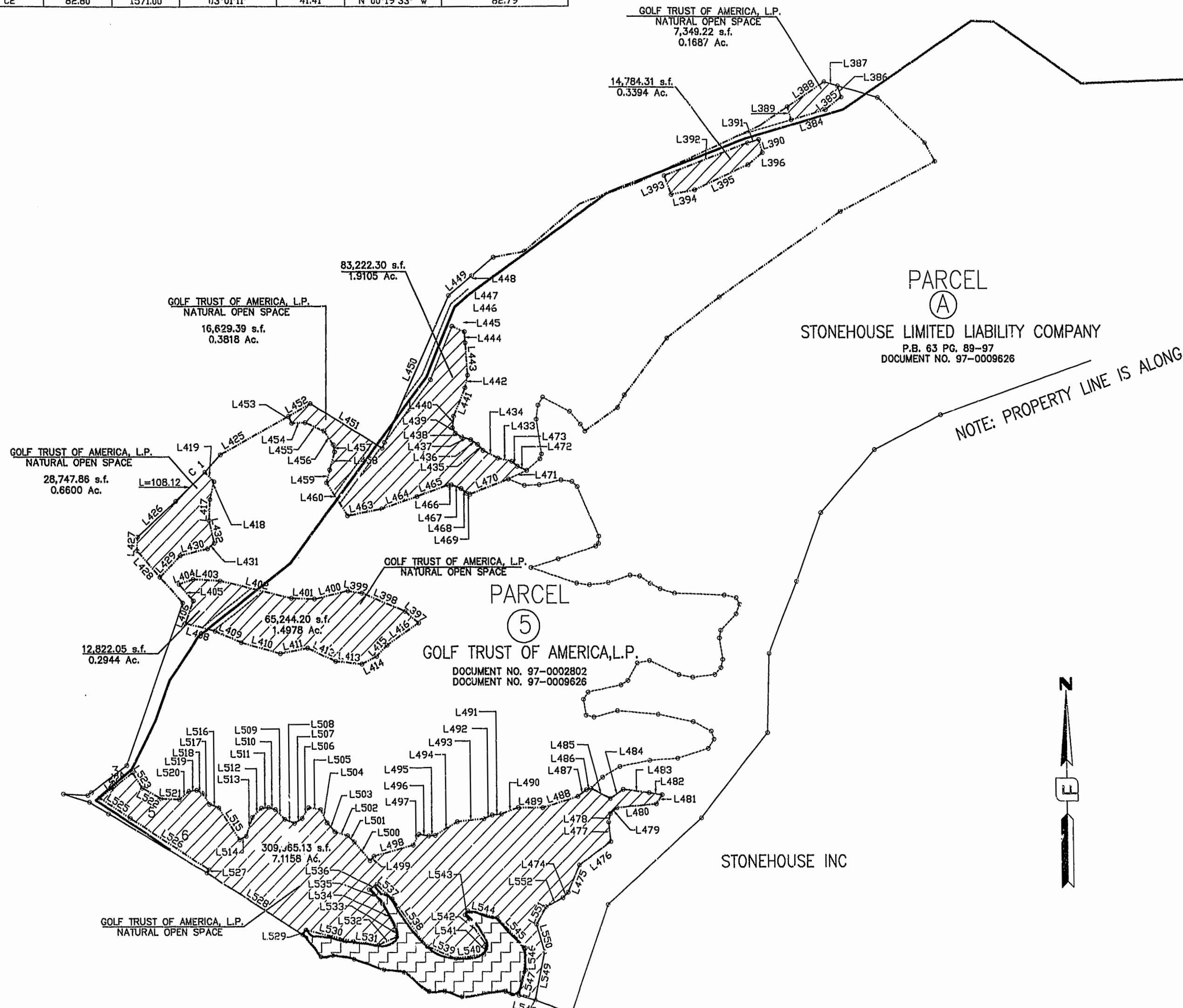


LINE TABLE

CURVE TABLE

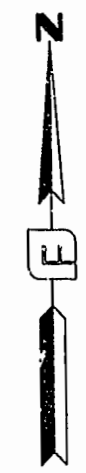
LINE	LENGTH	BEARING	LINE	LENGTH	BEARING
L383	40.18	N84°40'20"E	L482	34.53	N80°32'54"W
L384	35.00	N15°58'15"W	L483	69.69	N82°43'26"W
L385	54.04	N52°15'41"E	L484	42.19	S55°47'37"W
L386	29.71	N17°44'02"W	L485	56.76	N62°53'50"W
L387	38.20	N74°14'25"W	L486	12.52	S77°56'54"W
L388	117.43	S56°46'42"W	L487	29.25	S52°18'55"W
L389	353.02	S65°49'12"W	L488	97.65	S72°53'53"W
L390	35.00	N15°58'15"W	L489	65.37	N89°36'10"W
L391	30.20	S74°01'45"W	L490	46.92	S69°43'56"W
L392	239.23	S69°07'49"W	L491	25.37	S82°48'45"W
L393	51.78	S20°52'11"E	L492	23.97	S66°34'29"W
L394	63.29	N79°09'52"E	L493	71.51	S83°43'28"W
L395	158.06	N65°27'27"E	L494	68.20	S59°26'32"W
L396	48.71	N50°54'52"E	L495	17.60	S84°40'42"W
L397	46.40	N50°25'51"W	L496	25.49	N78°49'21"W
L398	123.42	N67°37'56"W	L497	32.33	S29°17'06"W
L399	37.97	N80°36'34"W	L498	108.67	S74°45'19"W
L400	90.86	S76°39'26"W	L499	15.61	S43°55'24"W
L401	61.81	N87°55'49"W	L500	63.67	N40°04'22"W
L402	193.84	N76°39'09"W	L501	23.24	N49°29'34"W
L403	71.92	N86°36'34"W	L502	35.35	N71°59'48"W
L404	40.17	S71°22'29"W	L503	30.29	N41°21'13"W
L405	57.05	S41°58'10"E	L504	37.98	N25°38'35"W
L406	198.36	S20°03'52"W	L505	32.65	N81°12'59"W
L407	97.47	N52°47'02"E	L506	33.14	S32°55'07"W
L408	80.81	S75°29'00"E	L507	23.53	S58°54'24"W
L409	74.60	S66°24'42"E	L508	27.83	N68°01'32"W
L410	107.98	S74°55'37"E	L509	35.14	N44°57'49"W
L411	74.00	N79°11'32"E	L510	18.77	N74°11'34"W
L412	81.30	S65°13'55"E	L511	18.50	S84°40'42"W
L413	70.30	S83°53'30"E	L512	34.47	S46°41'48"W
L414	44.20	N62°53'31"E	L513	51.37	S18°57'19"W
L415	40.11	N44°18'01"E	L514	20.57	S65°17'02"W
L416	101.93	N55°52'12"E	L515	97.00	N32°36'08"W
L417	54.03	N02°58'22"E	L516	27.44	N69°59'05"W
L418	57.56	N14°06'06"E	L517	33.13	N33°33'10"W
L419	35.00	N45°36'41"W	L518	17.26	N60°01'17"W
L420	16.49	N66°39'22"E	L519	20.10	S82°39'10"W
L421	20.13	S88°58'53"E	L520	34.57	S51°59'34"W
L422	15.90	N69°01'39"E	L521	48.04	N87°08'40"W
L423	64.14	N33°11'54"E	L522	56.70	N61°31'38"W
L424	3.71	N28°31'40"W	L523	46.84	N32°26'32"W
L425	94.61	S61°28'20"W	L524	109.33	S53°46'34"W
L426	137.34	S48°01'45"W	L525	96.63	S57°08'33"E
L427	35.36	S03°01'50"W	L526	245.63	S57°26'13"E
L428	91.45	S41°58'10"E	L527	10.00	S32°33'47"W
L429	77.69	N44°29'57"E	L528	299.30	S57°47'43"E
L430	74.29	N76°19'10"E	L529	15.01	N36°09'23"E
L431	23.20	N52°28'05"E	L530	129.65	S76°41'09"E
L432	59.78	N13°06'59"W	L531	66.05	S81°56'09"E
L433	37.14	N76°32'53"W	L532	53.28	N66°39'48"E
L434	44.25	N63°47'24"W	L533	19.80	N08°58'33"W
L435	21.11	N42°21'37"W	L534	74.69	N27°06'13"W
L436	21.60	N56°41'19"W	L535	49.33	N44°05'57"W
L437	25.05	N73°50'26"W	L536	23.71	N55°37'45"E
L438	19.15	N60°47'24"W	L537	54.69	S48°03'47"E
L439	16.53	N27°46'21"W	L538	153.42	S36°41'14"E
L440	30.04	N07°18'04"E	L539	82.43	S67°36'27"E
L441	79.35	N22°41'14"E	L540	74.35	N82°02'28"E
L442	32.68	N12°43'30"E	L541	26.86	N12°10'33"E
L443	83.83	N03°45'11"W	L542	93.00	N35°32'50"W
L444	28.70	N03°48'57"W	L543	12.72	N31°46'07"E
L445	48.13	N09°18'05"W	L544	80.21	S77°23'44"E
L446	25.10	N02°54'24"E	L545	107.80	S43°27'43"E
L447	64.07	N25°29'01"E	L546	56.63	S00°00'00"W
L448	13.67	N00°27'01"W	L547	66.12	S15°57'35"W
L449	79.54	S50°45'53"W	L548	44.63	S74°02'25"E
L450	432.23	S24°40'28"W	L549	124.83	N12°01'04"E
L451	221.25	N58°48'51"W	L550	73.92	N16°17'18"W
L452	66.95	S61°28'20"W	L551	52.21	N30°14'35"E
L453	19.56	S4°19'55"E	L552	50.48	N62°26'42"E
L454	36.09	N88°00'21"E			
L455	54.60	S66°35'08"E			
L456	42.37	S34°10'20"E			
L457	18.65	S10°36'54"E			
L458	48.54	S15°34'36"W			
L459	34.44	S14°29'02"W			
L460	100.91	S32°51'52"E			
L461	22.41	S65°46'58"E			
L462	29.78	S89°49'11"E			
L463	92.74	N79°03'56"E			
L464	99.25	N71°17'15"E			
L465	88.11	N70°40'00"E			
L466	8.25	N87°26'32"E			
L467	27.14	S68°31'38"E			
L468	19.32	S51°10'50"E			
L469	9.14	S74°26'49"E			
L470	109.24	N69°00'23"E			
L471	54.05	N65°13'27"E			
L472	26.76	N66°51'01"W			
L473	19.49	N50°31'05"W			
L474	20.21	N43°15'24"E			
L475	75.71	N23°55'56"E			
L476	103.50	N2°17'57"E			
L477	50.04	N05°41'50"W			
L478	21.85	N11°40'32"E			
L479	24.33	N48°54'41"E			
L480	104.91	N84°46'17"E			
L481	27.93	N34°10'54"E			

CURVE	LENGTH	RADIUS	DELTA	TANGENT	C.B.	CORD LENGTH
C1	170.41	1701.00	05°44'24"	85.28	N 45°09'38" E	170.34
C2	82.80	1571.00	03°01'11"	41.41	N 00°19'33" W	82.79



PARCEL  
A  
STONEHOUSE LIMITED LIABILITY COMPANY  
P.B. 63 PG. 89-97  
DOCUMENT NO. 97-0009626

NOTE: PROPERTY LINE IS ALONG



PLAT RECORDED  
P.D. NO. 20 PAGE 1-8

3:18 PM  
Recorded 10 day of July 1998  
DOCUMENT # 97-0009626  
W. S. S. Clerk

