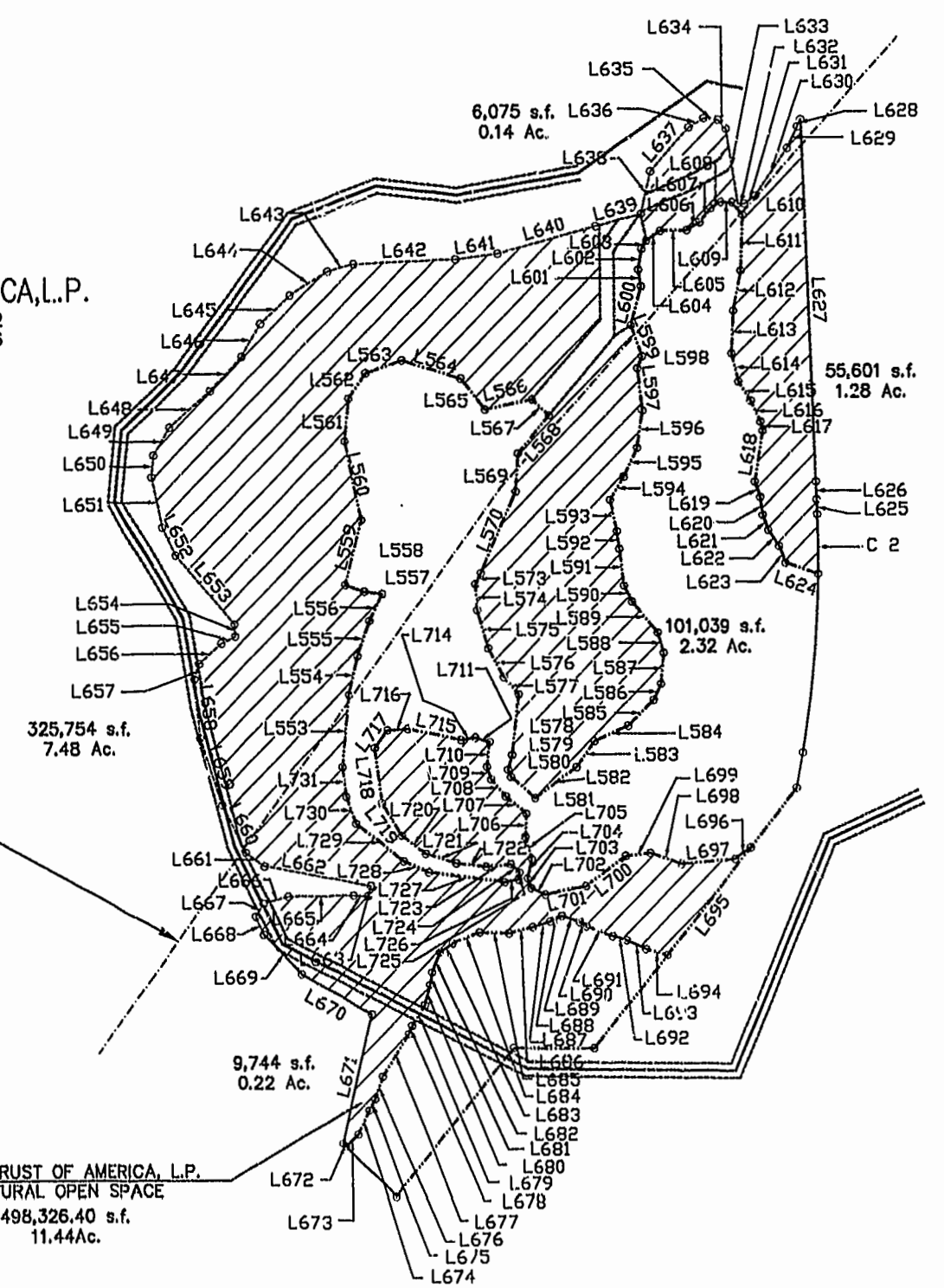


PARCEL  
 ⑥  
 GOLF TRUST OF AMERICA, L.P.  
 DOCUMENT NO. 97-0002802  
 DOCUMENT NO. 97-0009626

CURVE TABLE						
CURVE	LENGTH	RADIUS	DELTA	TANGENT	C.D.	CORD LENGTH
C1	170.41	1701.00	05°44'24"	85.28	N 45°09'38" E	170.34

LINE TABLE

LINE	LENGTH	BEARING	LINE	LENGTH	BEARING	LINE	LENGTH	BEARING	LINE	LENGTH	BEARING
L553	101.26	N66°09'36"E	L599	17.98	N21°34'34"E	L643	39.58	S75°10'27"W	L688	18.13	N66°34'01"E
L554	56.22	N13°47'35"E	L599	45.70	N19°29'20"W	L644	63.54	S58°13'15"W	L689	26.82	S71°56'42"E
L555	51.48	N19°35'03"E	L600	55.86	N15°11'09"E	L645	57.74	S47°46'04"W	L690	11.22	S57°05'52"E
L556	41.33	N25°58'45"E	L601	23.29	N09°17'12"W	L646	53.62	S30°51'55"W	L691	39.81	S70°03'22"E
L557	24.99	N81°19'06"W	L602	29.68	N09°44'02"E	L647	66.31	S44°01'46"W	L692	20.69	S74°01'49"E
L558	28.93	S72°30'17"E	L603	13.33	N32°11'55"E	L648	77.70	S49°33'43"W	L693	29.78	S66°08'35"E
L559	93.89	N15°06'11"E	L604	24.11	N56°18'27"E	L649	46.11	S32°08'29"W	L694	32.12	S73°52'20"E
L560	111.52	N11°54'27"W	L605	38.05	N88°06'18"E	L650	30.36	S05°25'55"W	L695	193.30	N39°25'20"E
L561	59.69	N06°18'00"E	L606	20.79	N59°49'24"E	L651	71.40	S12°13'11"E	L696	27.45	S54°25'17"W
L562	43.49	N34°59'31"E	L607	25.52	N39°41'12"E	L652	43.37	S26°57'24"E	L697	78.48	S85°23'35"W
L563	55.03	N71°25'51"E	L608	17.78	N60°25'08"E	L653	126.78	S40°58'38"E	L698	47.22	N71°28'39"W
L564	87.80	S73°25'18"E	L609	16.74	S87°08'41"E	L654	17.01	S03°16'45"E	L699	34.99	S83°02'25"W
L565	55.36	S38°24'02"E	L610	23.11	S40°36'02"E	L655	22.45	S63°53'14"W	L700	70.75	S54°14'41"W
L566	69.20	N78°25'45"E	L611	77.55	S02°28'10"W	L656	42.62	S48°17'40"W	L701	59.51	S78°41'02"W
L567	33.15	S49°05'21"E	L612	56.62	S11°36'16"W	L657	22.51	S17°49'42"W	L702	22.89	N67°31'32"W
L568	70.96	S40°54'39"W	L613	59.42	S03°02'38"W	L658	82.01	S05°02'07"E	L703	14.14	N21°50'49"W
L569	53.08	S04°27'43"W	L614	40.41	S13°51'49"E	L659	97.93	S17°46'51"E	L704	27.65	N14°18'22"E
L570	123.93	S24°16'35"W	L615	31.50	S33°04'36"E	L660	75.16	S26°59'53"E	L705	32.25	N16°04'04"W
L571	144.12	S28°23'21"W	L616	32.52	S24°36'21"E	L661	31.76	S55°28'16"E	L706	32.09	N02°49'21"E
L572	211.05	S44°50'56"W	L617	12.47	S13°33'52"E	L662	154.56	S79°40'43"E	L707	38.00	N49°29'09"W
L573	17.44	S28°18'16"W	L618	72.00	S09°21'34"W	L663	14.49	S15°39'22"W	L708	31.28	N40°54'49"W
L574	36.30	S03°43'29"E	L619	22.64	S14°44'17"E	L664	20.35	N88°32'05"W	L709	18.27	N18°25'45"W
L575	55.32	S16°06'27"E	L620	25.13	S07°25'29"E	L665	94.45	S89°02'43"W	L710	34.93	N06°53'04"E
L576	45.27	S28°34'01"E	L621	22.40	S20°46'03"E	L666	36.46	S75°36'54"W	L711	21.53	N74°01'22"W
L577	31.86	S39°59'10"E	L622	27.45	S35°21'36"E	L667	21.76	S31°14'40"W	L712	36.74	N12°16'14"W
L578	84.88	S06°56'02"W	L623	24.51	S21°39'24"E	L668	27.29	S24°26'31"E	L713	54.00	S13°14'45"W
L579	20.93	S16°23'42"W	L624	49.09	S71°29'37"E	L669	77.64	S44°09'56"E	L714	20.55	S82°29'55"W
L580	10.97	S21°01'56"E	L625	20.62	N01°50'12"W	L670	113.69	S60°48'13"E	L715	77.56	N78°47'18"W
L581	45.50	S49°52'05"E	L626	25.00	N01°50'12"W	L671	185.52	S13°24'43"W	L716	29.57	S86°26'39"W
L582	74.03	N54°27'36"E	L627	503.66	N01°50'12"W	L672	5.75	S46°26'27"E	L717	30.68	S37°15'02"W
L583	44.34	N36°09'37"E	L628	11.21	S26°00'16"W	L673	25.44	S46°35'00"E	L718	78.02	S07°04'32"E
L584	53.34	N66°24'30"E	L629	33.32	S26°53'47"W	L674	37.01	N25°24'20"E	L719	52.54	S32°36'45"E
L585	51.61	N45°32'26"E	L630	81.42	S35°37'14"W	L675	17.21	N27°07'31"E	L720	41.81	S52°37'43"E
L586	24.63	N26°34'08"E	L631	19.20	S53°09'34"W	L676	33.32	N19°39'33"E	L721	46.22	S73°32'44"E
L587	43.26	N05°56'39"E	L632	9.26	N89°27'12"W	L677	70.89	N33°02'22"E	L722	42.83	S82°46'12"E
L588	29.41	N16°18'29"W	L633	105.72	N09°03'15"W	L678	12.45	N21°22'33"E	L723	35.00	N84°32'22"E
L589	56.67	N40°04'18"W	L634	17.59	N44°03'28"W	L679	34.41	N31°49'50"E	L724	17.11	S45°47'56"E
L590	24.63	N26°33'40"W	L635	21.01	N85°23'58"W	L680	28.74	N15°15'39"E	L725	9.70	S10°53'29"W
L591	51.20	N06°30'15"W	L636	24.62	S59°58'38"W	L681	17.40	N10°00'53"E	L726	19.12	S80°31'25"W
L592	24.75	N08°07'24"W	L637	82.61	S42°13'15"W	L682	30.25	N22°39'09"E	L727	109.92	N82°48'06"W
L593	44.84	N11°29'55"W	L638	60.80	S13°22'16"W	L683	22.79	N56°08'01"E	L728	38.27	N66°26'32"W
L594	37.35	N31°22'34"E	L639	66.64	S75°33'38"W	L684	41.15	N68°42'31"E	L729	85.51	N52°09'10"W
L595	44.88	N25°40'51"E	L640	146.56	S74°50'25"W	L685	41.97	S98°08'14"E	L730	39.10	N20°43'25"W
L596	52.36	N08°58'45"E	L641	60.64	S82°56'15"W	L686	34.98	N76°23'21"E	L731	41.81	N07°32'06"W
L597	59.44	N06°00'09"W	L642	146.76	S87°24'00"W	L687	27.35	N72°17'39"E			



VIRGINIA ELECTRIC AND POWER COMPANY  
 P.B. 41, PG 23 PLAT DATE JUNE 12, 1985

PLAT RECORDED IN  
 B.B. NO. 70 PAGE 1-8

3:18pm  
 Recorded 10 day of July 1998  
 DOCUMENT # 980012920  
 Blake S. Clark

