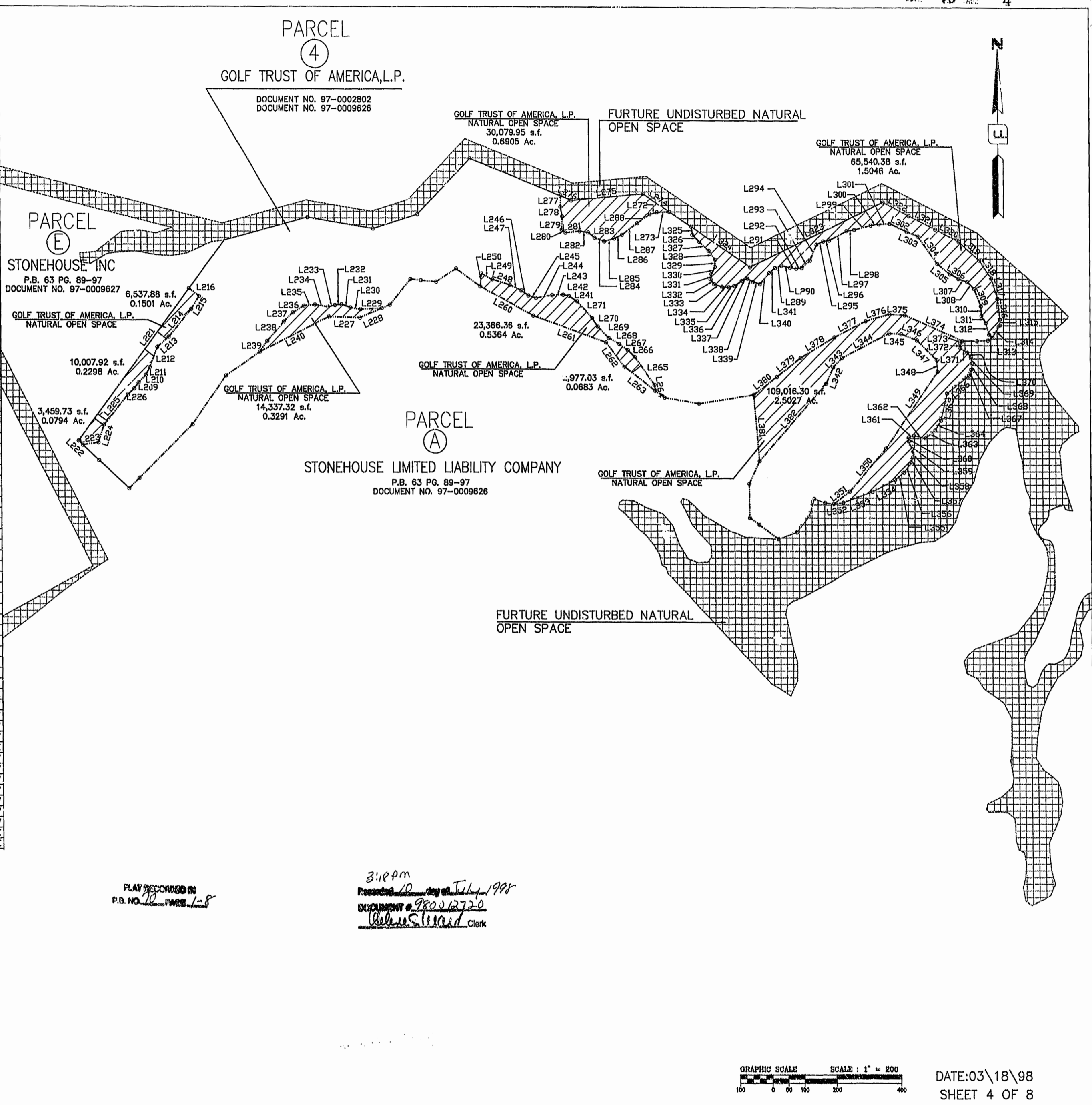


LINE TABLE

LINE	LENGTH	BEARING	LINE	LENGTH	BEARING
L209	21.81	N37°24'26"E	L308	29.16	S45°06'33"E
L210	32.50	N45°00'00"E	L309	56.66	S21°58'34"E
L211	26.63	N27°33'24"E	L310	29.07	S04°03'20"E
L212	65.11	N21°21'53"E	L311	25.13	S32°17'23"E
L213	46.77	N49°42'54"E	L312	36.10	S16°58'04"E
L214	109.32	N40°04'50"E	L313	13.24	S49°23'02"E
L215	45.90	S32°16'44"W	L314	42.71	N31°46'21"E
L216	38.85	N52°54'22"W	L315	17.43	N01°43'17"E
L217	89.87	N34°51'42"E	L316	62.47	N06°05'05"W
L218	74.04	N42°11'39"E	L317	64.16	N17°08'56"W
L219	11.33	N14°57'33"W	L318	65.86	N35°17'31"W
L220	41.13	S75°02'27"W	L319	85.80	N48°51'34"W
L221	574.08	S37°05'38"W	L320	80.43	N63°18°05"W
L222	18.73	S47°37'07"E	L321	91.22	N63°18°05"W
L223	49.10	N81°00'59"E	L322	90.54	N63°18°05"W
L224	55.51	N17°46'13"E	L323	456.77	S64°45'32"W
L225	116.94	N39°42'40"E	L324	218.69	N56°39'24"W
L226	28.12	N46°28'06"E	L325	24.56	S07°34'51"E
L227	96.43	S88°00'23"E	L326	30.26	S46°19'01"E
L228	74.58	N67°24'14"E	L327	39.33	S48°02'57"E
L229	66.82	S87°09'08"W	L328	33.29	S35°52'51"E
L230	32.18	N80°41'32"W	L329	21.47	S02°28'07"W
L231	29.13	N70°31'43"W	L330	24.23	S26°15'19"W
L232	20.66	S83°26'19"W	L331	15.85	S09°29'02"W
L233	21.72	S75°31'44"W	L332	18.19	S36°13'48"E
L234	41.44	N80°49'04"W	L333	25.72	S72°12'04"E
L235	35.60	S93°44'27"W	L334	21.14	S86°34'39"E
L236	39.04	S59°24'54"W	L335	17.60	N76°52'59"E
L237	39.20	S45°44'23"W	L336	27.18	N58°06'05"E
L238	78.25	S41°27'24"W	L337	19.83	N66°00'10"E
L239	38.84	S34°54'23"W	L338	19.69	S59°13'07"E
L240	238.98	N63°47'28"E	L339	21.99	S71°17'45"E
L241	30.03	N58°17'11"W	L340	45.41	N40°16'26"E
L242	18.89	N79°03'34"W	L341	23.32	N53°16'51"E
L243	34.05	S88°07'32"W	L342	53.95	N23°27'50"E
L244	51.06	S80°02'14"W	L343	39.18	N45°00'00"E
L245	24.36	N72°58'26"W	L344	163.67	N63°17'06"E
L246	25.80	N53°47'29"W	L345	38.72	S87°16'49"E
L247	40.44	N66°24'23"W	L346	51.57	S68°58'04"E
L248	56.58	N72°37'22"W	L347	85.11	S45°52'53"E
L249	38.13	N63°32'12"W	L348	35.57	S04°23'31"E
L250	38.46	N05°03'44"W	L349	282.55	S35°03'23"W
L251	40.20	N72°37'14"W	L350	170.86	S40°59'51"W
L252	31.64	S81°42'18"W	L351	64.31	S53°33'42"W
L253	39.84	S62°15'42"W	L352	31.43	N81°43'38"E
L254	29.32	S70°19'05"W	L353	96.48	N70°12'35"E
L255	26.74	S64°01'04"W	L354	78.59	N62°48'59"E
L256	6.29	S06°00'24"W	L355	35.19	N51°59'43"E
L257	46.63	S93°59'36"E	L356	32.22	N37°10'31"E
L258	74.22	N57°32'36"E	L357	23.31	N23°23'55"E
L259	92.04	S54°28'45"E	L358	17.13	N01°34'26"W
L260	185.52	S61°57'50"E	L359	32.55	N22°36'22"W
L261	239.62	S70°41'41"E			
L262	94.06	S38°03'35"E	L366	87.40	N51°51'40"E
L263	118.72	S53°16'50"E	L367	18.56	N22°01'17"E
L264	17.45	N06°54'25"W	L368	19.60	N05°42'11"E
L265	104.54	N36°23'01"W	L369	19.27	N08°28'03"W
L266	28.96	N46°22'59"W	L370	17.28	N42°07'32"W
L267	32.02	N54°12'12"W	L371	25.48	N56°19'16"W
L268	37.73	N62°12'22"W	L372	13.53	N08°38'17"W
L269	47.92	N44°40'36"W	L373	11.22	N45°59'41"E
L270	31.02	N33°53'28"W	L374	194.71	N66°41'01"W
L271	68.52	N42°46'38"W	L375	48.52	N86°38'25"W
L272	22.83	N75°14'02"E	L376	76.34	S74°14'35"W
L273	38.43	N88°36'47"E	L377	108.95	S63°25'51"W
L274	98.57	N56°39'24"W	L378	121.70	S59°29'11"W
L275	224.12	S84°42'33"W	L379	93.37	S52°19'29"W
L276	35.36	N68°21'01"W	L380	90.71	S53°06'39"W
L277	32.42	S02°05'16"W	L381	199.92	S04°38'06"E
L278	28.92	S10°36'19"E	L382	313.52	N41°53'32"E
L279	40.78	S01°26'45"W			
L280	14.12	S52°39'12"E			
L281	45.07	N84°02'53"E			
L282	26.09	S81°41'19"E			
L283	25.24	S53°30'01"E			
L284	31.96	S69°01'32"E			
L285	32.56	N74°33'34"E			
L286	27.10	N65°25'43"E			
L287	59.23	N53°16'57"E			
L288	47.68	N55°25'12"E			
L289	20.84	N70°28'49"E			
L290	26.67	S76°35'49"E			
L291	19.89	S82°15'13"E			
L292	17.25	N83°28'30"E			
L293	34.69	N48°27'04"E			
L294	51.78	N23°19'54"E			
L295	23.31	N64°10'28"E			
L296	18.59	N82°39'28"E			
L297	61.66	N62°20'30"E			
L298	24.40	N81°24'40"E			
L299	52.10	N75°40'18"E			
L300	26.36	N80°34'02"E			
L301	32.64	N88°35'22"E			
L302	58.87	S66°16'11"E			
L303	36.59	S67°12'10"E			
L304	102.10	S35°56'42"E			
L305	50.96	S52°13'23"E			
L306	28.59	S62°16'09"E			
L307	29.43	S71°44'24"E			



PLAY RECORDED IN  
P.B. NO. 10 PAGE 1-8

3:18 PM  
Recorded in City of Tulsa, 1998  
DOCUMENT # 980012720  
Richard S. Ward, Clerk