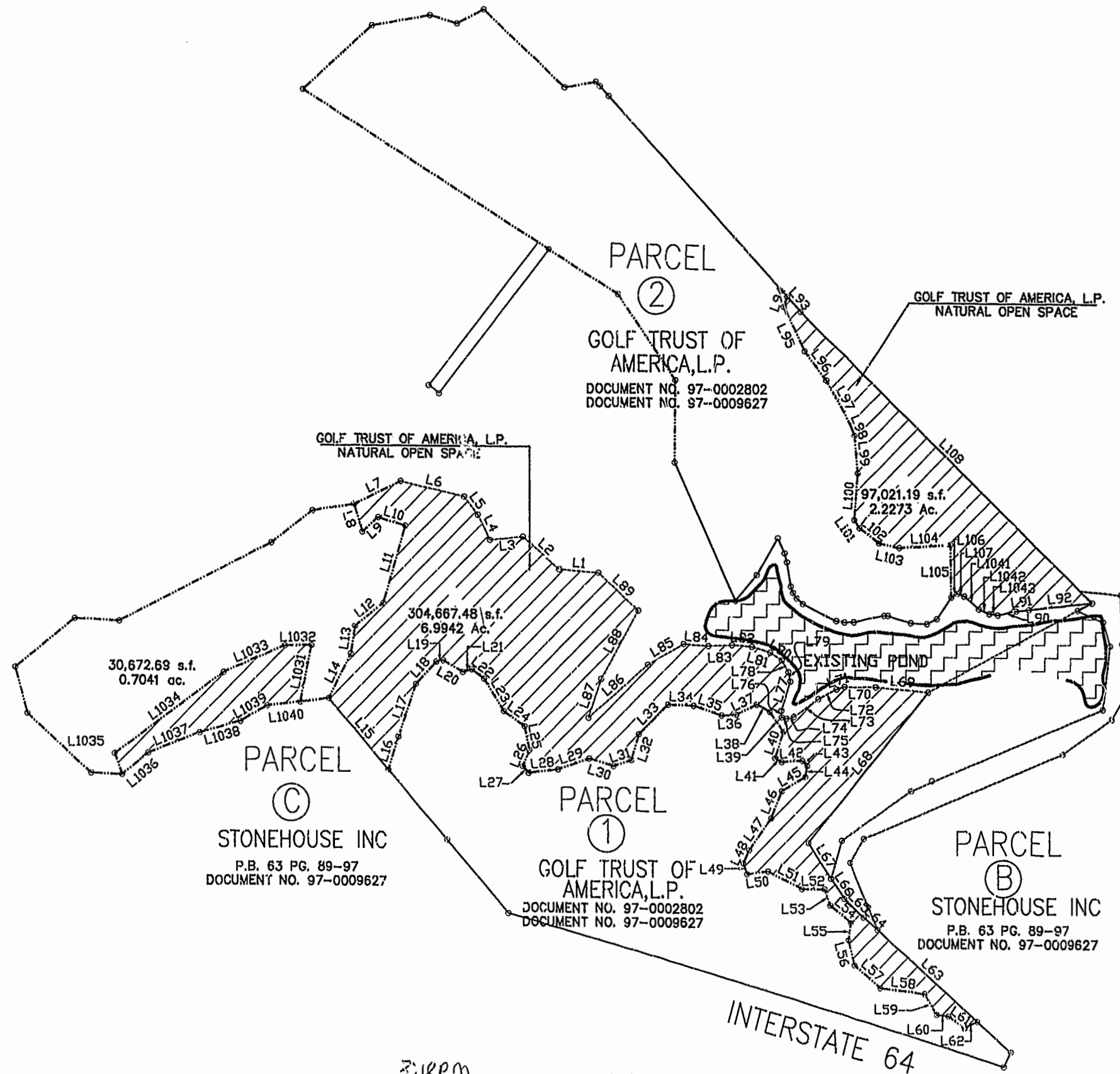


# LINE TABLE

LINE	LENGTH	BEARING	LINE	LENGTH	BEARING
L1	77.14	N85°28'22"W	L100	89.57	S04°39'25"W
L2	94.62	N49°20'42"W	L101	18.84	S35°12'55"E
L3	65.27	S84°18'07"W	L102	47.45	S52°24'05"E
L4	53.31	N26°37'46"W	L103	41.60	S77°59'41"E
L5	43.80	N37°29'57"W	L104	100.84	N86°42'32"E
L6	128.92	N77°21'26"W	L105	59.32	S87°53'09"E
L7	102.08	S64°14'36"W	L106	28.19	S60°31'40"E
L8	54.82	S17°15'34"E	L107	58.48	S32°47'48"E
L9	41.96	N48°45'47"E	L108	797.84	N46°10'28"W
L10	55.55	S73°14'04"E	L1031	38.22	S49°56'07"E
L11	153.23	S16°08'35"W	L1032	22.50	S66°16'59"E
L12	72.21	S51°48'27"W	L1033	16.47	S83°11'56"E
L13	53.42	S08°35'52"W	L1031	110.26	S11°24'34"W
L14	96.31	S26°56'53"W	L1032	52.27	N88°56'57"E
L15	179.37	S41°02'59"E	L1033	131.17	N66°51'28"E
L16	65.86	N17°12'46"E	L1034	264.46	N53°46'25"E
L17	106.99	N19°21'52"E	L1035	42.42	N19°47'48"W
L18	58.28	N42°30'39"E	L1036	65.80	N51°01'42"E
L19	13.79	N78°01'05"E	L1037	108.63	N68°44'14"E
L20	45.08	S60°50'10"E	L1038	83.02	N74°15'29"E
L21	18.33	N74°14'34"E	L1039	60.80	N60°33'41"E
L22	29.77	S53°17'56"E	L1040	65.22	N83°26'33"E
L23	72.76	S32°41'21"E	L1041	38.22	S49°56'07"E
L24	49.97	S54°35'06"E	L1042	22.50	S66°16'59"E
L25	45.86	S11°05'15"E	L1043	16.47	S83°11'56"E
L26	33.78	S21°57'12"W			
L27	16.89	S42°23'50"E			
L28	59.12	N83°07'05"E			
L29	65.22	N70°40'17"E			
L30	48.89	S72°45'51"E			
L31	37.62	N71°33'34"E			
L32	51.08	N16°42'18"E			
L33	81.57	N45°00'00"E			
L34	50.23	S83°13'01"E			
L35	58.69	S71°34'14"E			
L36	28.35	N86°37'35"E			
L37	45.04	N63°52'55"E			
L38	29.25	S62°06'23"E			
L39	46.78	S35°32'08"E			
L40	53.25	S17°53'04"W			
L41	14.49	S61°42'08"E			
L42	40.77	N86°37'36"E			
L43	13.69	S45°00'00"E			
L44	21.42	S09°47'20"W			
L45	53.87	S59°37'03"W			
L46	56.17	S22°06'51"W			
L47	75.05	S35°23'49"W			
L48	27.85	S25°01'16"W			
L49	21.67	S19°58'40"E			
L50	41.72	N83°09'01"E			
L51	74.41	S63°42'57"E			
L52	45.61	N89°59'35"E			
L53	33.12	S19°17'04"E			
L54	51.94	S49°58'15"E			
L55	33.35	S08°08'12"W			
L56	48.66	S14°44'15"E			
L57	66.51	S49°00'54"E			
L58	88.88	S82°45'13"E			
L59	45.84	S30°36'54"E			
L60	23.35	S81°52'37"E			
L61	39.03	S55°18'26"E			
L62	27.77	N63°25'51"E			
L63	263.28	N48°22'31"W			
L64	35.41	N48°22'31"W			
L65	53.07	N48°22'31"W			
L66	45.63	N32°54'17"W			
L67	81.37	N32°54'17"W			
L68	372.88	N39°20'02"E			
L69	104.44	N84°52'13"W			
L70	61.95	N89°48'54"W			
L71	16.31	S73°37'13"W			
L72	39.06	S61°43'45"W			
L73	60.74	S54°59'19"W			
L74	15.14	S77°47'59"W			
L75	9.52	N72°53'50"W			
L76	12.25	N01°38'11"W			
L77	58.53	N17°05'18"E			
L78	18.52	N12°09'35"W			
L79	25.49	N28°58'42"W			
L80	27.59	N57°25'59"W			
L81	37.71	N73°26'20"W			
L82	39.06	N85°40'08"W			
L83	46.96	S87°11'33"W			
L84	48.62	N85°59'24"W			
L85	81.16	S60°22'50"W			
L86	154.64	S48°54'38"W			
L87	78.01	N18°26'24"E			
L88	149.43	N29°06'55"E			
L89	106.32	N47°25'38"W			
L90	31.33	S14°31'42"E			
L91	41.79	S49°31'29"E			
L92	125.52	N83°39'37"E			
L93	38.80	N42°42'32"W			
L94	20.45	S19°42'35"W			
L95	93.55	S26°05'48"E			
L96	70.71	S38°10'30"E			
L97	96.09	S28°21'55"E			
L98	22.69	S23°44'42"E			
L99	71.83	S05°22'12"E			



PLAT RECORDED  
P.B. NO. 70 PAGE 1-8

2:18 PM  
RECORDED 10 July 1998  
9801220  
W. S. WARD, Clerk

