

PARCEL 1A
(P.B. 49, PG. 69)

PRIVATE INGRESS/EGRESS EASEMENT
FOR PARCEL 12
(AREA = 12,534 SQ.FT. or 0.288 AC.)
(M.B. PG.)

MATCH LINE SHEET 1

MATCH LINE SHEET 1

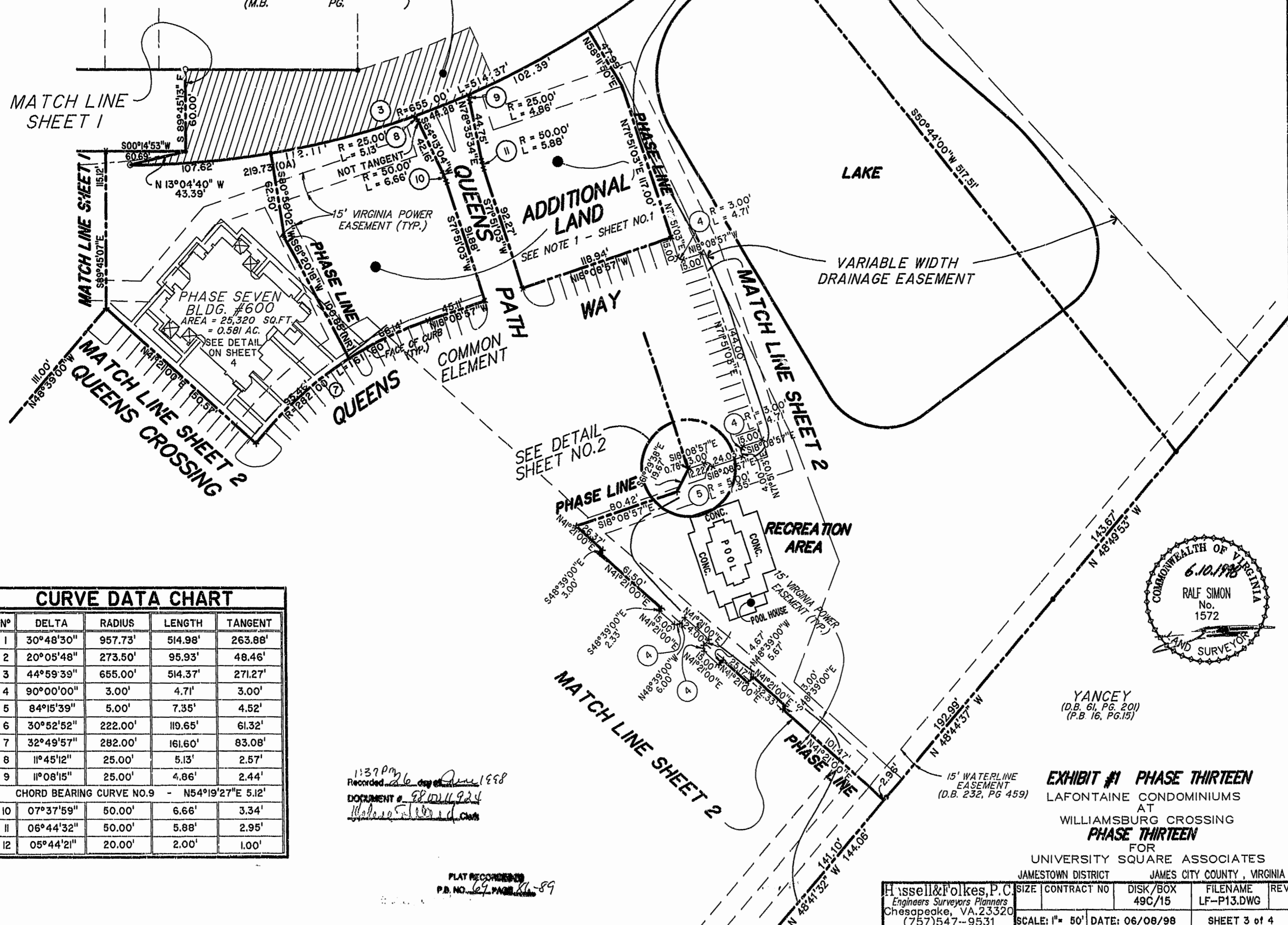
MATCH LINE SHEET 2

CURVE DATA CHART

Nº	DELTA	RADIUS	LENGTH	TANGENT
1	30°48'30"	957.73'	514.98'	263.88'
2	20°05'48"	273.50'	95.93'	48.46'
3	44°59'39"	655.00'	514.37'	271.27'
4	90°00'00"	3.00'	4.71'	3.00'
5	84°15'39"	5.00'	7.35'	4.52'
6	30°52'52"	222.00'	119.65'	61.32'
7	32°49'57"	282.00'	161.60'	83.08'
8	11°45'12"	25.00'	5.13'	2.57'
9	11°08'15"	25.00'	4.86'	2.44'
CHORD BEARING CURVE NO.9 - N54°19'27"E 5.12'				
10	07°37'59"	50.00'	6.66'	3.34'
11	06°44'32"	50.00'	5.88'	2.95'
12	05°44'21"	20.00'	2.00'	1.00'

1:37 PM
Recorded 26 days of June 1998
DOCUMENT # 98011924
Hassell & Folkes, P.C.

PLAT RECORDED
P.B. NO. 69 PAGE 88-89



COMMONWEALTH OF VIRGINIA
6.10.1998
RALF SIMON
No. 1572
LAND SURVEYOR

YANCEY
(D.B. 61, PG. 201)
(P.B. 16, PG. 15)

EXHIBIT #1 PHASE THIRTEEN
LAFONTAINE CONDOMINIUMS
AT
WILLIAMSBURG CROSSING
PHASE THIRTEEN

FOR
UNIVERSITY SQUARE ASSOCIATES
JAMESTOWN DISTRICT JAMES CITY COUNTY, VIRGINIA

Hassell & Folkes, P.C. Engineers Surveyors Planners Chesapeake, VA. 23320 (757)547-9531	SIZE CONTRACT NO	DISK/BOX 49C/15	FILENAME LF-P13.DWG	REV.
SCALE: 1" = 50'	DATE: 06/08/98	SHEET 3 of 4		

