

46-1-01-0-0001
"GREENSPRINGS PLANTATION"
(DB 322, PG 254)



EXIST. 20' JAMES CITY COUNTY SERVICE
AUTHORITY SAN. SEWER EASEMENT AS
SHOWN IN AS-BUILT LOCATION. D.B. 141 - PG. 388

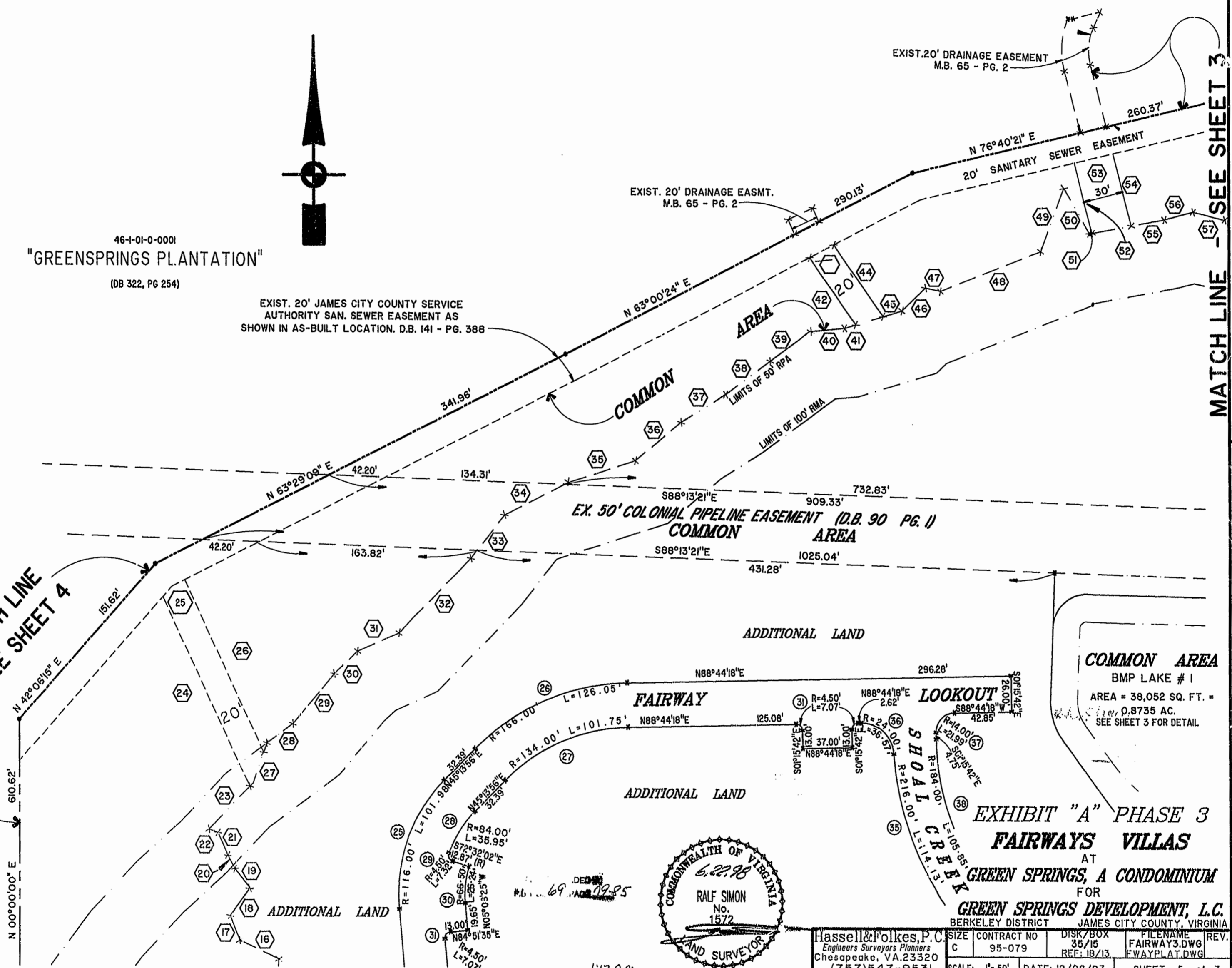
EXIST. 20' DRAINAGE EASMT.
M.B. 65 - PG. 2

EXIST. 20' DRAINAGE EASEMENT
M.B. 65 - PG. 2

20' SANITARY SEWER EASEMENT

SEE SHEET 3
MATCH LINE

MATCH LINE
SEE SHEET 4

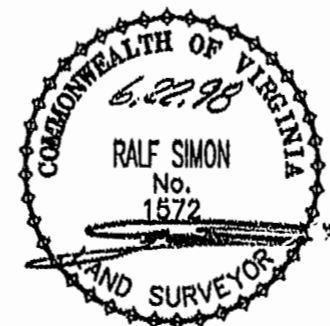


COMMON AREA
BMP LAKE # 1
AREA = 38,052 SQ. FT. =
0.8735 AC.
SEE SHEET 3 FOR DETAIL

FAIRWAY

LOOKOUT

**EXHIBIT "A" PHASE 3
FAIRWAYS VILLAS**
AT
GREEN SPRINGS, A CONDOMINIUM
FOR
GREEN SPRINGS DEVELOPMENT, L.C.
BERKELEY DISTRICT JAMES CITY COUNTY, VIRGINIA



Hassell & Polkes, P.C. Engineers Surveyors Planners Chesapeake, VA, 23320 (757) 547-9531	CONTRACT NO 95-079	DISK/BOX 35/15 REF: 18/13	FILENAME FAIRWAY3.DWG FWAYPLAT.DWG	REV.
SCALE: 1" = 50'	DATE: 12/08/97	SHEET 5 of 7		

1:13.0m
DOCUMENT # 98011523
Clerk

