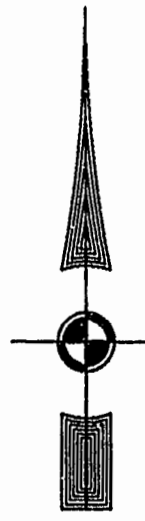


EXIST. 20' JAMES CITY COUNTY SERVICE AUTHORITY SAN. SEWER EASEMENT AS SHOWN IN AS-BUILT LOCATION. D.B. 141 - PG. 388



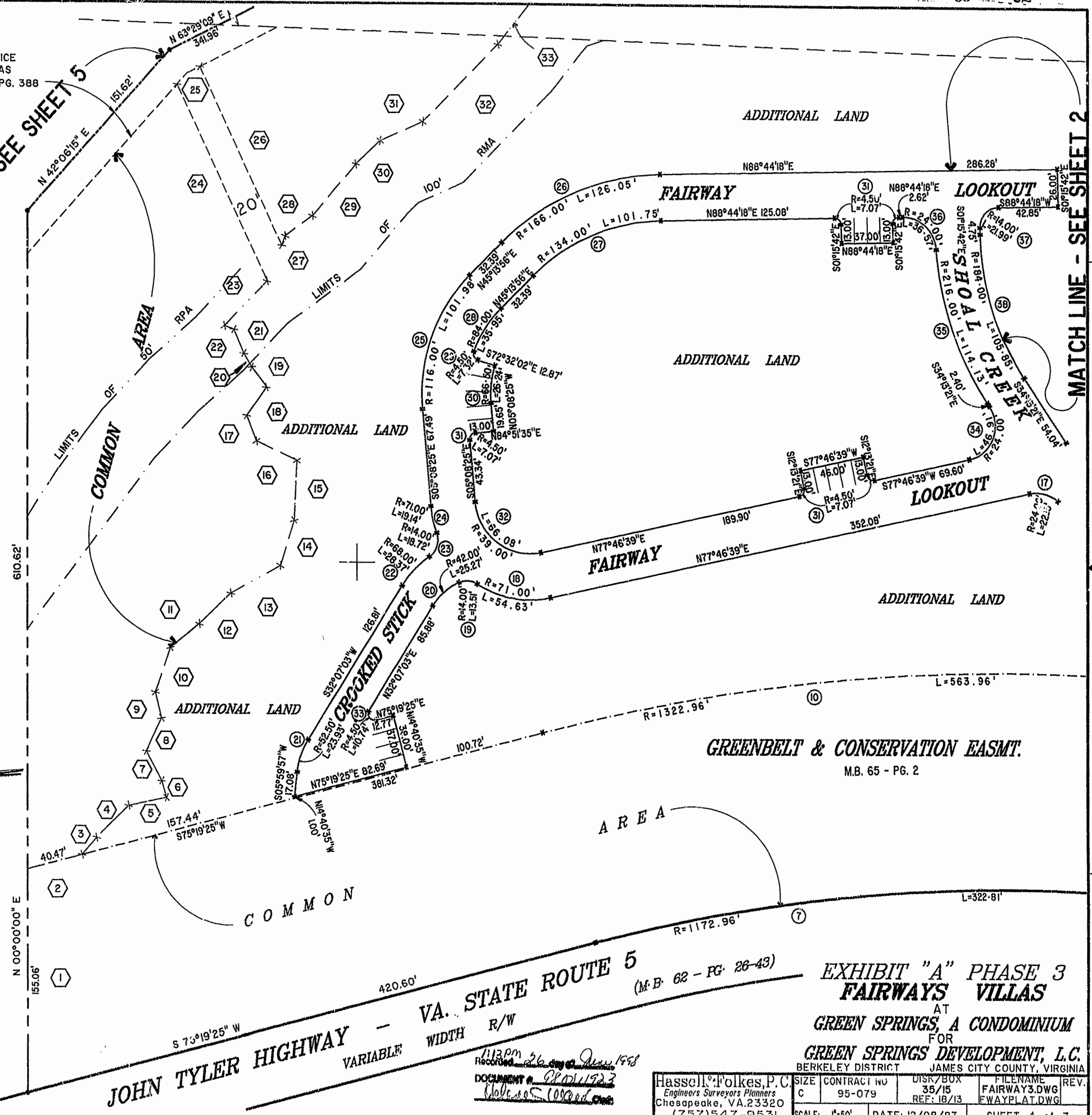
MATCH LINE - SEE SHEET 5

MATCH LINE - SEE SHEET 2

46-1-01-0-0001 "GREENSPRINGS PLANTATION" (DB 322, PG 254)



PLAY RECORDING P.B. NO. 149, DATE 09-29-95



JOHN TYLER HIGHWAY - VA. STATE ROUTE 5 (M.B. 62 - PG. 26-43) VARIABLE WIDTH R/W

EXHIBIT "A" PHASE 3 FAIRWAYS VILLAS AT GREEN SPRINGS, A CONDOMINIUM FOR GREEN SPRINGS DEVELOPMENT, L.C. BERKELEY DISTRICT JAMES CITY COUNTY, VIRGINIA

113pm 26 July 1998
DOCUMENT # 98011923
Hassell & Folkes, P.C.

Hassell & Folkes, P.C. Engineers Surveyors Planners Chesapeake, VA 23320 (757) 547-9531	SIZE: C CONTRACT NO: 95-079	DISK/BOX: 35/15 REF: 18/13	FILENAME: FAIRWAY3.DWG FWAYPLAT.DWG	REV:
SCALE: 1"=50'	DATE: 12/08/87	SHEET 4 of 7		

