

AREA TABULATION

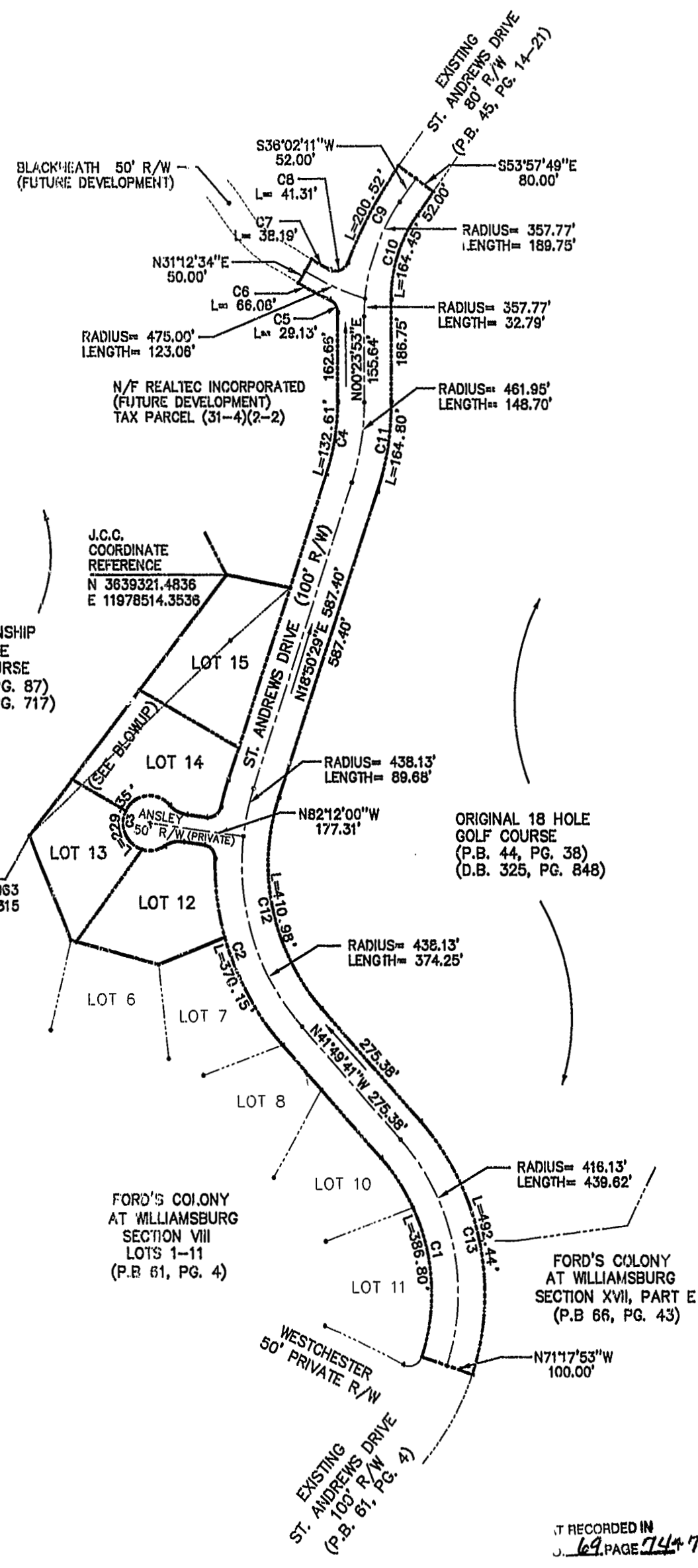
FORD'S COLONY AT WILLIAMSBURG SECTION VIII LOTS 12-15

	S.F.	A.C.
TOTAL AREA OF RESIDENTIAL LOTS (INCLUDING ADJUSTMENT PARCEL)	163,104	3.744
TOTAL AREA OF R/W	246,342	5.655
TOTAL AREA SUBDIVIDED	409,446	9.399
TOTAL NUMBER OF LOTS	4	
AVERAGE LOT SIZE	40,776	0.936
GROSS LOTS PER ACRE	0.426	

NOTE:
 1. UNLESS OTHERWISE NOTED ALL DRAINAGE EASEMENTS SHALL BE PRIVATE.
 2. JAMES CITY COUNTY (JCC) GEODETIC COORDINATE REFERENCES ARE FOR GIS USE ONLY. METES AND BOUNDS ARE BASED UPON FORD'S COLONY RECORD MERIDIAN.

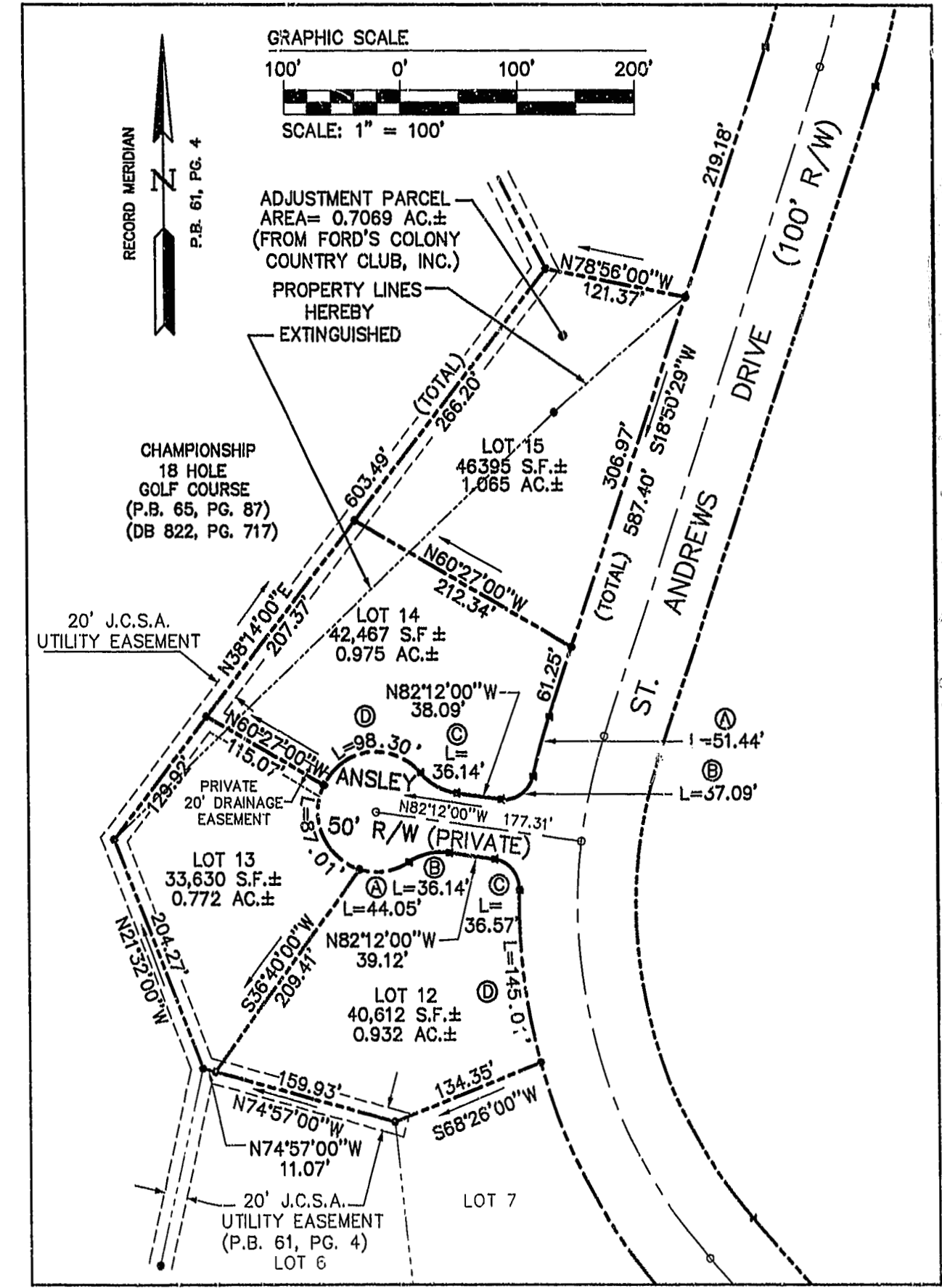
R/W CURVE TABLE

NUMBER	DELTA	RADIUS	LENGTH	TANGENT	CHORD	BEARING
C1	60°31'48"	396.13	396.80	213.65	369.08	N11°33'47"W
C2	43°26'51"	488.13	370.15	194.48	361.34	N20°06'15"W
C3	262°49'10"	50.00	229.35	---	75.00	N07°48'00"E
C4	18°26'36"	411.95	132.61	66.98	132.03	N09°37'11"E
C5	66°45'29"	25.00	29.13	16.47	27.51	N32°58'53"W
C6	07°34'12"	500.00	66.08	33.08	66.01	N82°34'33"W
C7	04°51'45"	450.00	38.18	19.11	38.18	S61°13'18"E
C8	94°40'48"	25.00	41.31	27.13	38.77	N69°00'08"E
C9	14°21'41"	800.00	200.52	100.79	200.00	N28°51'21"E
C10	35°38'18"	264.30	164.45	84.90	161.81	S18°13'02"W
C11	16°26'36"	511.95	164.80	83.12	164.09	S09°37'11"W
C12	60°40'10"	386.13	410.99	227.12	392.05	S11°29'36"E
C13	60°31'48"	468.13	492.44	272.00	488.85	S11°33'17"E



LOT CURVE TABLE

NUMBER	DELTA	RADIUS	LENGTH	TANGENT	CHORD	CH. BEARING
12A	50°28'29"	50.00	44.05	23.57	42.64	N81°37'45"E
12B	41°24'35"	50.00	36.14	18.90	35.36	N77°05'33"E
12C	83°49'10"	25.00	36.57	22.44	33.40	S40°17'29"E
12D	17°01'17"	488.13	145.01	73.04	144.48	S08°53'29"E
13	99°42'23"	50.00	87.01	59.28	76.44	S23°16'55"E
14A	06°02'16"	488.13	51.44	25.74	51.41	S15°49'21"W
14B	84°59'47"	25.00	37.09	22.91	33.78	S55°18'07"W
14C	41°24'35"	50.00	36.14	18.90	35.36	N61°29'43"W
14D	112°38'18"	50.00	98.30	75.03	83.22	S82°53'24"W



CONSULTING ENGINEERS
 5248 Olde Towne Road, Suite 1
 Williamsburg, Virginia 23188
 (757) 253-0040
 Fax (757) 220-8994

PLAT OF SUBDIVISION
 SECTION VIII
 LOTS 12-15
FORD'S COLONY @ WILLIAMSBURG
 POWHATAN DISTRICT JAMES CITY COUNTY VIRGINIA



1	5/27/98	REVISED PER JAMES CITY COUNTY COMMENTS	JFS
No.	DATE	REVISION / COMMENT / NOTE	BY

Designed SOW	Drawn JKR/JFS
Scale NOTED	Date 5/12/98
Project No. 5652-8	
Drawing No. 2 OF 2	

05 27 98 13:13 56528P01