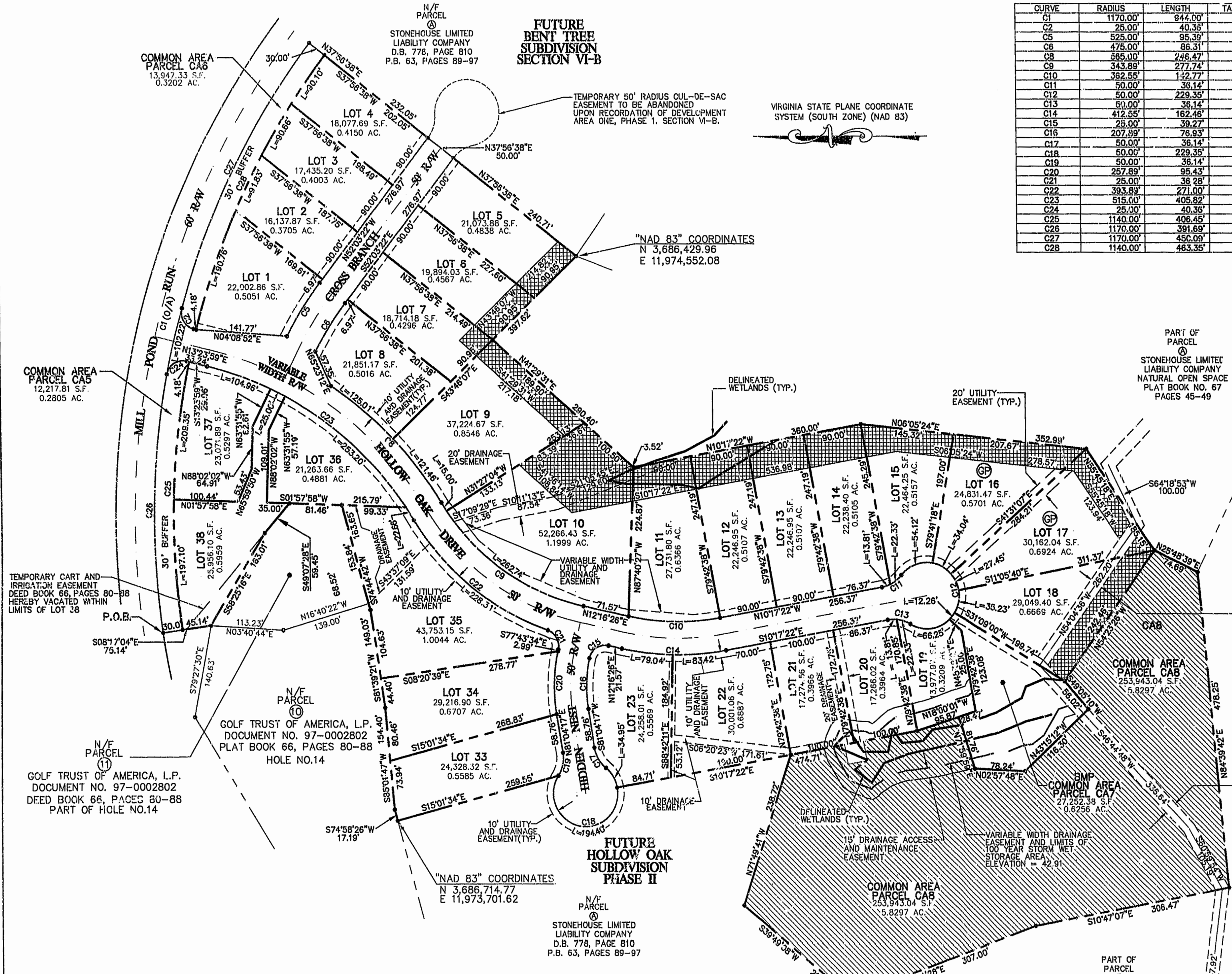


CURVE	RADIUS	LENGTH	TANGENT	CHORD	BEARING	DELTA
C1	1170.00'	944.00'	498.39'	918.60'	N75°10'13"W	46°13'42"
C2	25.00'	40.35'	26.12'	36.12'	N59°30'04"E	92°30'10"
C5	525.00'	95.39'	47.83'	95.28'	S57°15'40"E	10°24'37"
C8	475.00'	86.31'	43.27'	86.19'	S57°15'40"E	10°24'37"
C8	665.00'	246.47'	125.23'	244.52'	S48°03'08"W	24°59'40"
C9	343.89'	277.74'	146.95'	270.25'	S35°24'41"W	46°16'30"
C10	362.55'	142.77'	72.32'	141.85'	N00°59'32"E	22°33'48"
C11	50.00'	38.14'	18.90'	35.36'	N30°59'40"W	41°24'35"
C12	50.00'	229.35'	56.69'	75.00'	N79°42'38"E	26°24'09"
C13	50.00'	36.14'	18.90'	35.36'	N10°24'59"E	41°24'35"
C14	412.55'	162.46'	82.30'	161.42'	N00°59'32"E	22°33'48"
C15	25.00'	39.27'	25.00'	35.36'	S32°43'34"E	90°06'00"
C16	207.89'	76.93'	38.91'	76.49'	S88°19'36"E	21°12'09"
C17	50.00'	36.14'	18.90'	35.36'	N60°21'59"E	41°24'35"
C18	50.00'	229.35'	56.69'	75.00'	S08°55'43"E	26°24'09"
C19	50.00'	36.14'	18.90'	35.36'	N78°13'26"W	41°24'35"
C20	257.89'	95.43'	48.27'	94.89'	S88°19'39"E	21°12'09"
C21	25.00'	36.28'	22.17'	33.18'	N60°42'06"E	83°08'41"
C22	393.89'	271.00'	141.11'	265.68'	N38°50'21"E	39°25'11"
C23	515.00'	405.82'	214.11'	395.40'	N35°58'28"E	45°08'57"
C24	25.00'	40.36'	26.12'	36.12'	N32°51'06"W	92°30'10"
C25	1140.00'	406.45'	205.40'	404.30'	N88°04'14"W	20°25'40"
C26	1170.00'	391.69'	197.70'	389.87'	N88°41'37"W	19°10'53"
C27	1170.00'	450.09'	227.86'	447.32'	N63°04'36"W	22°02'29"
C28	1140.00'	463.35'	234.92'	460.16'	S63°41'59"E	23°17'15"

VIRGINIA STATE PLANE COORDINATE SYSTEM (SOUTH ZONE) (NAD 83)



N/F PARCEL
STONEHOUSE LIMITED LIABILITY COMPANY
D.B. 778, PAGE 810
P.B. 63, PAGES 89-97

FUTURE BENT TREE SUBDIVISION SECTION VI-B

TEMPORARY 50' RADIUS CUL-DE-SAC EASEMENT TO BE ABANDONED UPON RECORDATION OF DEVELOPMENT AREA ONE, PHASE I, SECTION VI-B.

"NAD 83" COORDINATES
N 3,686,429.96
E 11,974,552.08

PART OF PARCEL
STONEHOUSE LIMITED LIABILITY COMPANY
NATURAL OPEN SPACE
PLAT BOOK NO. 67
PAGES 45-49

LOT SERVICED BY GRINDER PUMP

20' UTILITY EASEMENT FOR USE BY JAMES CITY SERVICE AUTHORITY TO SERVICE FUTURE SEC. VI-B AND SEC. VI-C

20' UTILITY EASEMENT FOR USE BY JAMES CITY SERVICE AUTHORITY

FUTURE HOLLOW OAK SUBDIVISION PHASE II

"NAD 83" COORDINATES
N 3,686,714.77
E 11,973,701.62

N/F PARCEL
STONEHOUSE LIMITED LIABILITY COMPANY
D.B. 778, PAGE 810
P.B. 63, PAGES 89-97

PART OF PARCEL
STONEHOUSE LIMITED LIABILITY COMPANY
NATURAL OPEN SPACE
PLAT BOOK NO. 67
PAGES 45-49

GRAPHIC SCALE
SCALE: 1" = 100'

"PUBLIC OPEN SPACE"

"PRIVATE OPEN SPACE"

PLAT RECORDED
P.L. NO. 11-46 AM
11:46 AM
Recorded 18 June 1998
DOCUMENT # 98011356
By Claudia H. B...
Rep. Clerk

STONEHOUSE

SUBDIVISION PLAT
OF
HOLLOW OAK
BEING A SUBDIVISION
OF
STONEHOUSE LIMITED LIABILITY COMPANY
STONEHOUSE DISTRICT, JAMES CITY COUNTY
DATE: 04/16/98 SCALE: 1" = 100'
SHEET 2 OF 2

