

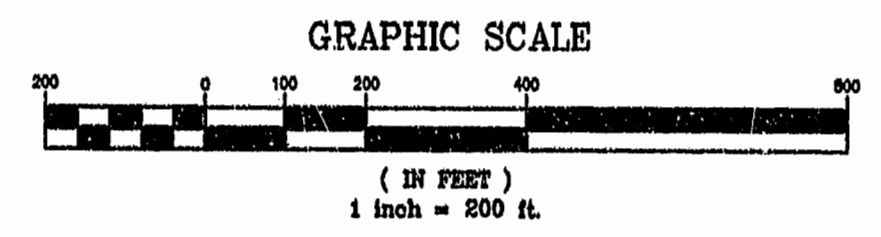
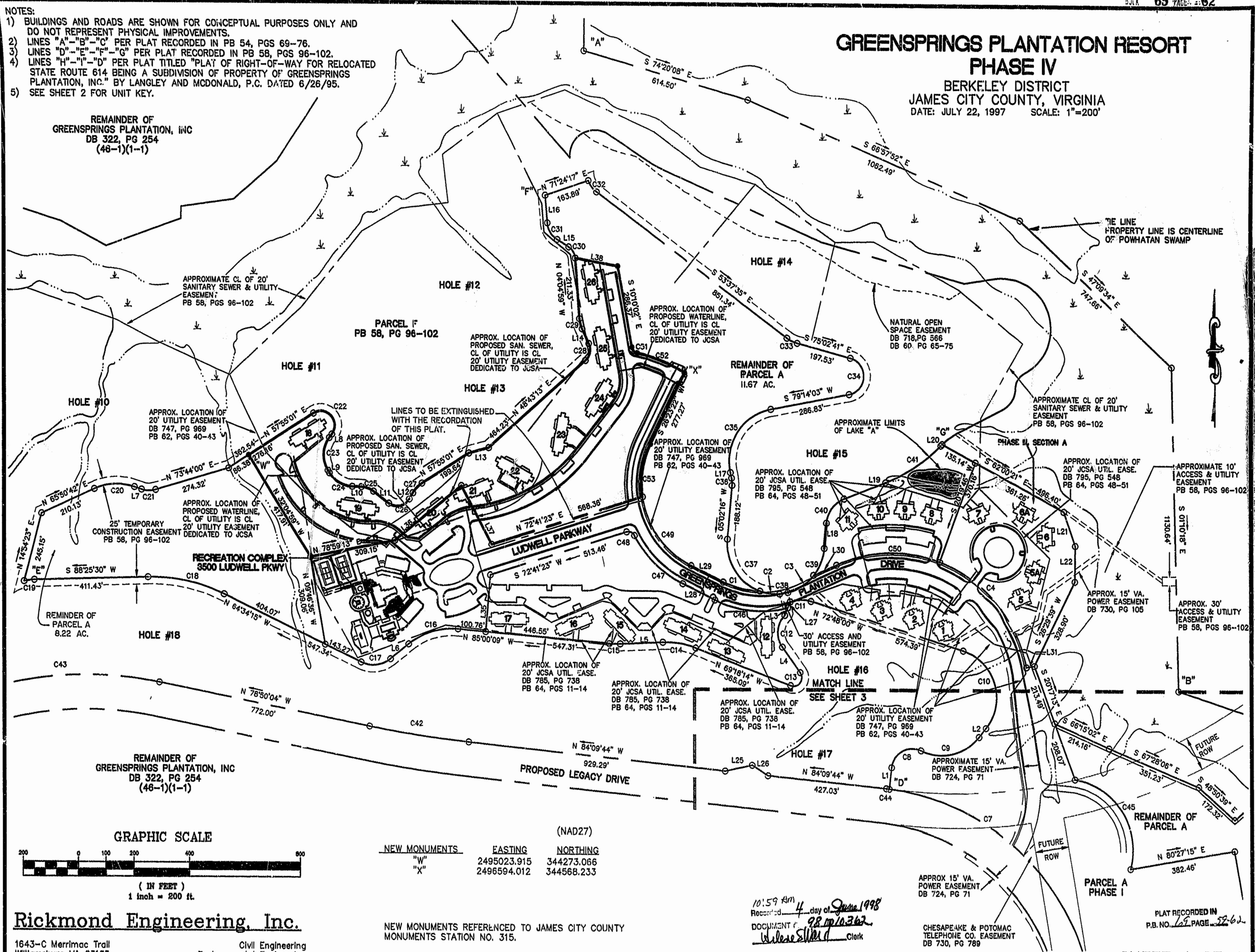
NOTES:

- 1) BUILDINGS AND ROADS ARE SHOWN FOR CONCEPTUAL PURPOSES ONLY AND DO NOT REPRESENT PHYSICAL IMPROVEMENTS.
- 2) LINES "A"- "B"- "C" PER PLAT RECORDED IN PB 54, PGS 69-76.
- 3) LINES "D"- "E"- "F"- "G" PER PLAT RECORDED IN PB 58, PGS 96-102.
- 4) LINES "H"- "I"- "J" PER PLAT TITLED "PLAT OF RIGHT-OF-WAY FOR RELOCATED STATE ROUTE 614 BEING A SUBDIVISION OF PROPERTY OF GREENSPRINGS PLANTATION, INC." BY LANGLEY AND McDONALD, P.C. DATED 6/26/95.
- 5) SEE SHEET 2 FOR UNIT KEY.

GREENSPRINGS PLANTATION RESORT PHASE IV

BERKELEY DISTRICT
JAMES CITY COUNTY, VIRGINIA
DATE: JULY 22, 1997 SCALE: 1"=200'

REMAINDER OF
GREENSPRINGS PLANTATION, INC
DB 322, PG 254
(46-1)(1-1)



(NAD27)

NEW MONUMENTS	EASTING	NORTHING
"W"	2495023.915	344273.066
"X"	2496594.012	344568.233

Rickmond Engineering, Inc.
1643-C Merrimac Trail
Williamsburg VA 23185
(804)229-1776 or 898-4149

Civil Engineering
Environmental Engineering
Land Surveying

NEW MONUMENTS REFERENCED TO JAMES CITY COUNTY
MONUMENTS STATION NO. 315.

10:59 AM
Recorded 4 day of June 1998
DOCUMENT # 98-10362
Walter S. Siler Clerk

CHESAPEAKE & POTOMAC
TELEPHONE CO. EASEMENT
DB 730, PG 789

PLAT RECORDED IN
P.B. NO. 69 PAGE 62