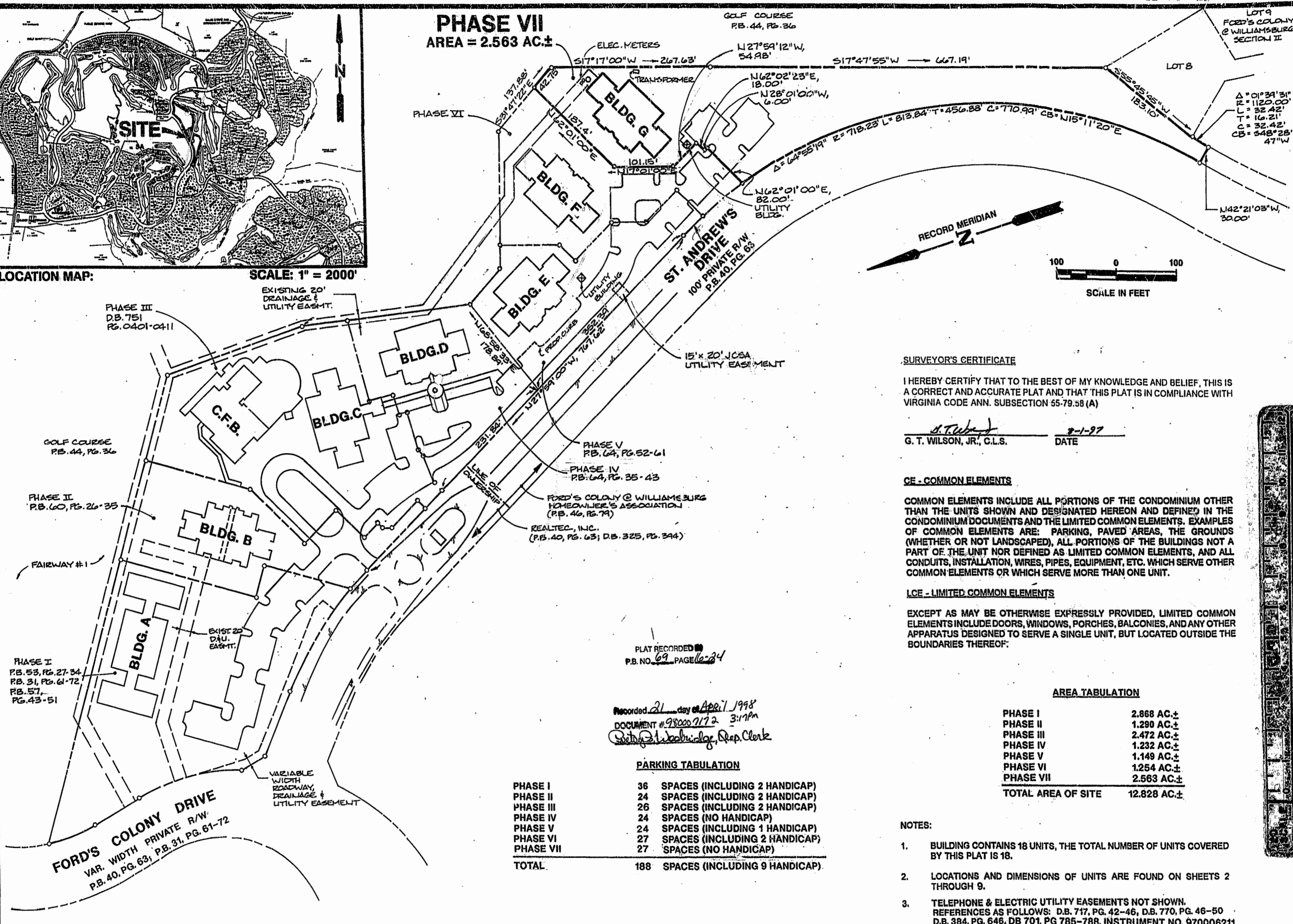


LOCATION MAP: SCALE: 1" = 2000'

**PHASE VII**  
AREA = 2.563 AC.±



SURVEYOR'S CERTIFICATE

I HEREBY CERTIFY THAT TO THE BEST OF MY KNOWLEDGE AND BELIEF, THIS IS A CORRECT AND ACCURATE PLAT AND THAT THIS PLAT IS IN COMPLIANCE WITH VIRGINIA CODE ANN. SUBSECTION 55-79.58 (A)

*G. T. Wilson, Jr.* 8-1-97  
G. T. WILSON, JR., C.L.S. DATE

CE - COMMON ELEMENTS

COMMON ELEMENTS INCLUDE ALL PORTIONS OF THE CONDOMINIUM OTHER THAN THE UNITS SHOWN AND DESIGNATED HEREON AND DEFINED IN THE CONDOMINIUM DOCUMENTS AND THE LIMITED COMMON ELEMENTS. EXAMPLES OF COMMON ELEMENTS ARE: PARKING, PAVED AREAS, THE GROUNDS (WHETHER OR NOT LANDSCAPED), ALL PORTIONS OF THE BUILDINGS NOT A PART OF THE UNIT NOR DEFINED AS LIMITED COMMON ELEMENTS, AND ALL CONDUITS, INSTALLATION, WIRES, PIPES, EQUIPMENT, ETC. WHICH SERVE OTHER COMMON ELEMENTS OR WHICH SERVE MORE THAN ONE UNIT.

LCE - LIMITED COMMON ELEMENTS

EXCEPT AS MAY BE OTHERWISE EXPRESSLY PROVIDED, LIMITED COMMON ELEMENTS INCLUDE DOORS, WINDOWS, PORCHES, BALCONIES, AND ANY OTHER APPARATUS DESIGNED TO SERVE A SINGLE UNIT, BUT LOCATED OUTSIDE THE BOUNDARIES THEREOF:

AREA TABULATION

PHASE I	2.868 AC.±
PHASE II	1.290 AC.±
PHASE III	2.472 AC.±
PHASE IV	1.232 AC.±
PHASE V	1.149 AC.±
PHASE VI	1.254 AC.±
PHASE VII	2.563 AC.±
<b>TOTAL AREA OF SITE</b>	<b>12.828 AC.±</b>

PLAT RECORDED  
P.B. NO. 69 PAGE 6-24

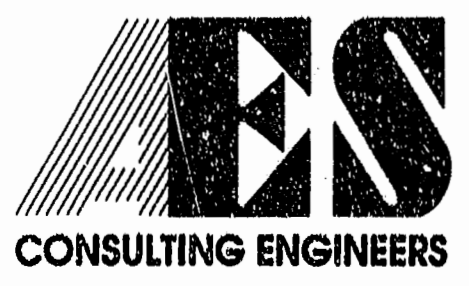
Recorded 21 day of April 1998  
DOCUMENT # 980007172 3:17pm  
*G. T. Wilson, Jr.*, Dep. Clerk

PARKING TABULATION

PHASE I	36 SPACES (INCLUDING 2 HANDICAP)
PHASE II	24 SPACES (INCLUDING 2 HANDICAP)
PHASE III	26 SPACES (INCLUDING 2 HANDICAP)
PHASE IV	24 SPACES (NO HANDICAP)
PHASE V	24 SPACES (INCLUDING 1 HANDICAP)
PHASE VI	27 SPACES (INCLUDING 2 HANDICAP)
PHASE VII	27 SPACES (NO HANDICAP)
<b>TOTAL</b>	<b>188 SPACES (INCLUDING 9 HANDICAP)</b>

NOTES:

- BUILDING CONTAINS 18 UNITS, THE TOTAL NUMBER OF UNITS COVERED BY THIS PLAT IS 18.
- LOCATIONS AND DIMENSIONS OF UNITS ARE FOUND ON SHEETS 2 THROUGH 9.
- TELEPHONE & ELECTRIC UTILITY EASEMENTS NOT SHOWN. REFERENCES AS FOLLOWS: D.B. 717, PG. 42-46, D.B. 770, PG. 46-50, D.B. 384, PG. 648, DB 701, PG 785-788, INSTRUMENT NO. 970006211.



5248 Olde Towne Road, Suite 1  
Williamsburg, Virginia 23188  
(804) 253-0040  
Fax (804) 220-8994

**EXHIBIT A-2**  
**PLAT OF CONDOMINIUM,**  
**MANOR CLUB**  
**AT FORD'S COLONY**  
**PHASE VII**  
OWNER/DEVELOPER: MARRIOTT OWNERSHIP RESORTS, INC.  
POWhatan DISTRICT JAMES CITY COUNTY VIRGINIA



No.	DATE	REVISION / COMMENT / NOTE	BY
1	11/97	ADDED UTILITY EASEMENT REFERENCES PER MARRIOTT	GTW

Designed ADS  
Scale 1"=100'  
Project No. 7739-CE  
Drawing No. 1 of 9

