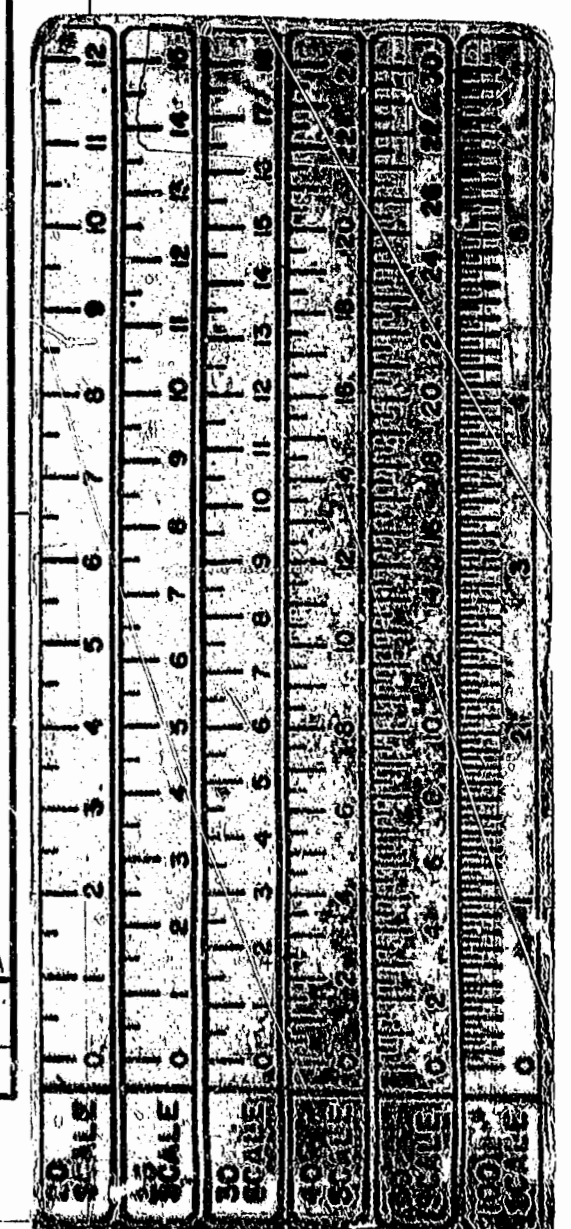
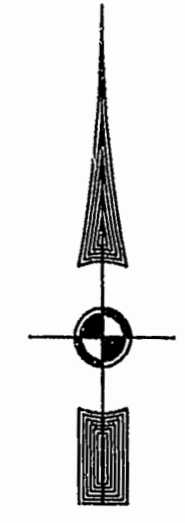
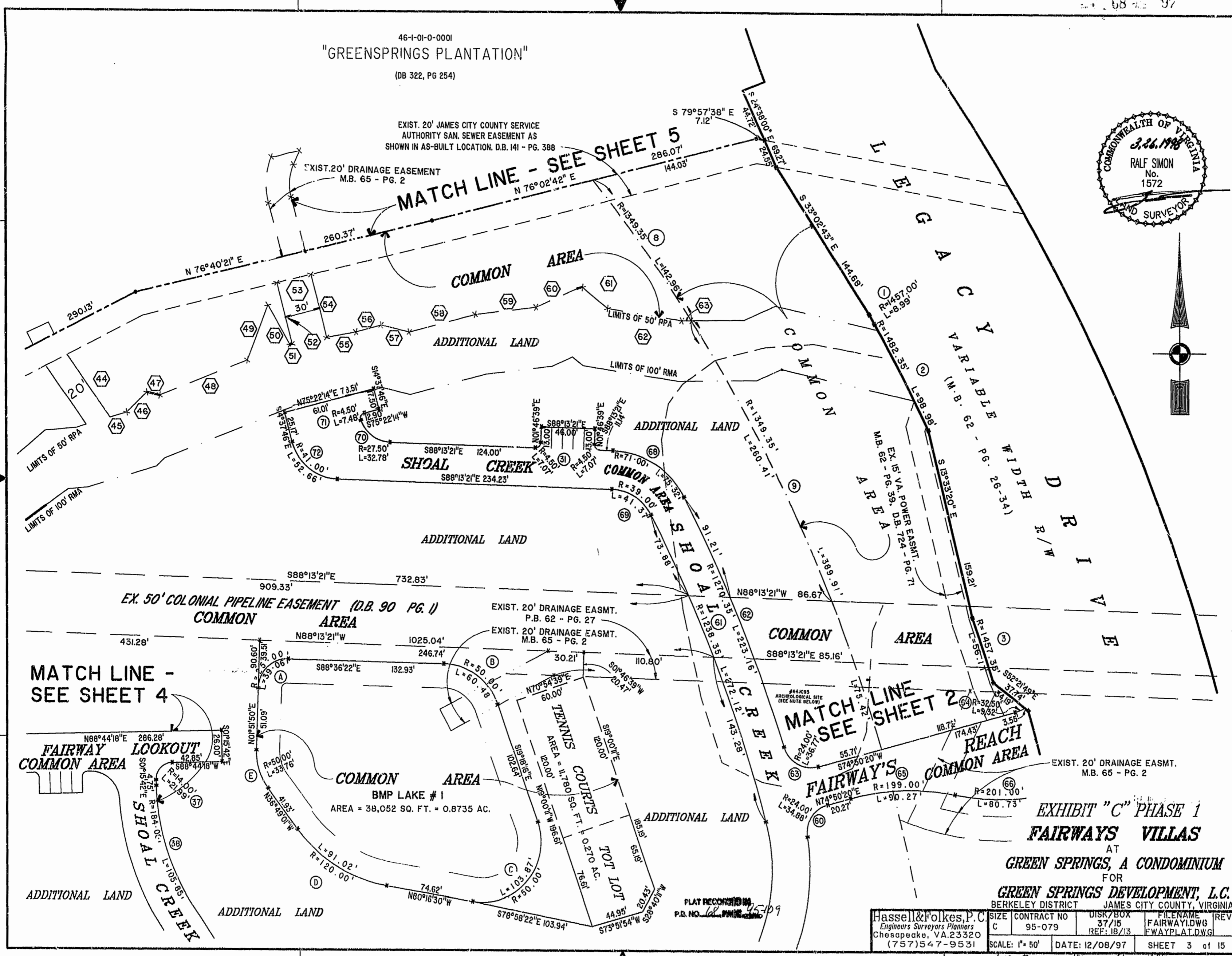


46-1-01-0-0001
"GREENSPRINGS PLANTATION"
(DB 322, PG 254)

EXIST. 20' JAMES CITY COUNTY SERVICE
AUTHORITY SAN. SEWER EASEMENT AS
SHOWN IN AS-BUILT LOCATION. D.B. 141 - PG. 388



EXIST. 20' DRAINAGE EASEMENT
M.B. 65 - PG. 2
MATCH LINE - SEE SHEET 5



**MATCH LINE -
SEE SHEET 4**

**MATCH LINE
SEE SHEET 2**

COMMON AREA
BMP LAKE # 1
AREA = 38,052 SQ. FT. = 0.8735 AC.

**EXHIBIT "C" PHASE 1
FAIRWAYS VILLAS**

AT
GREEN SPRINGS, A CONDOMINIUM
FOR
GREEN SPRINGS DEVELOPMENT, L.C.
BERKELEY DISTRICT JAMES CITY COUNTY, VIRGINIA

Hassell & Folkes, P.C. Engineers Surveyors Planners Chesapeake, VA 23320 (757) 547-9531	SIZE	CONTRACT NO	DISK/BOX	FILENAME	REV.
	C	95-079	REF: 18/13	FAIRWAY1.DWG FWAYPLAT.DWG	
SCALE: 1" = 50'		DATE: 12/08/97	SHEET 3 of 15		

139p.m. Recorded...
DOCUMENT # 980005806
W. L. ...