

RIGHT OF WAY CURVE TABLE						
NUMBER	DELTA	RADIUS	LENGTH	TANGENT	CHORD	CHORD BEARING
RW1	09°11'49"	603.69'	96.90'	48.56'	96.20'	N02°22'46"E
RW2	48°20'52"	340.00'	286.89'	152.62'	278.47'	S57°16'23"E

LOT CURVE TABLE						
NUMBER	DELTA	RADIUS	LENGTH	TANGENT	CHORD	CHORD BEARING
1A	09°31'07"	340.00'	56.48'	28.31'	56.42'	N76°41'15"W
1B	79°13'41"	25.00'	34.57'	20.69'	31.88'	N41°49'59"W
1C	18°01'30"	603.69'	189.92'	95.75'	189.14'	N11°13'54"W
2	17°45'28"	340.00'	126.38'	53.11'	104.96'	N63°02'58"W
3	06°46'42"	340.00'	40.22'	20.14'	40.20'	N47°24'37"W
4A	03°46'19"	250.00'	16.46'	8.23'	16.46'	S70°29'10"W
4B	82°07'35"	25.00'	35.83'	21.78'	32.84'	N70°20'12"W
4C	14°44'51"	340.00'	87.51'	44.00'	87.27'	N36°38'50"W
5	06°53'56"	250.00'	30.10'	15.07'	30.08'	S75°49'17"W
6	18°46'56"	250.00'	81.95'	41.35'	81.59'	S88°39'43"W
85A	13°02'34"	603.69'	137.42'	69.01'	137.13'	N13°29'57"E
85B	93°55'11"	25.00'	40.98'	26.77'	36.54'	N53°56'16"E
85C	46°06'12"	290.00'	232.84'	123.11'	226.64'	S56°06'03"E

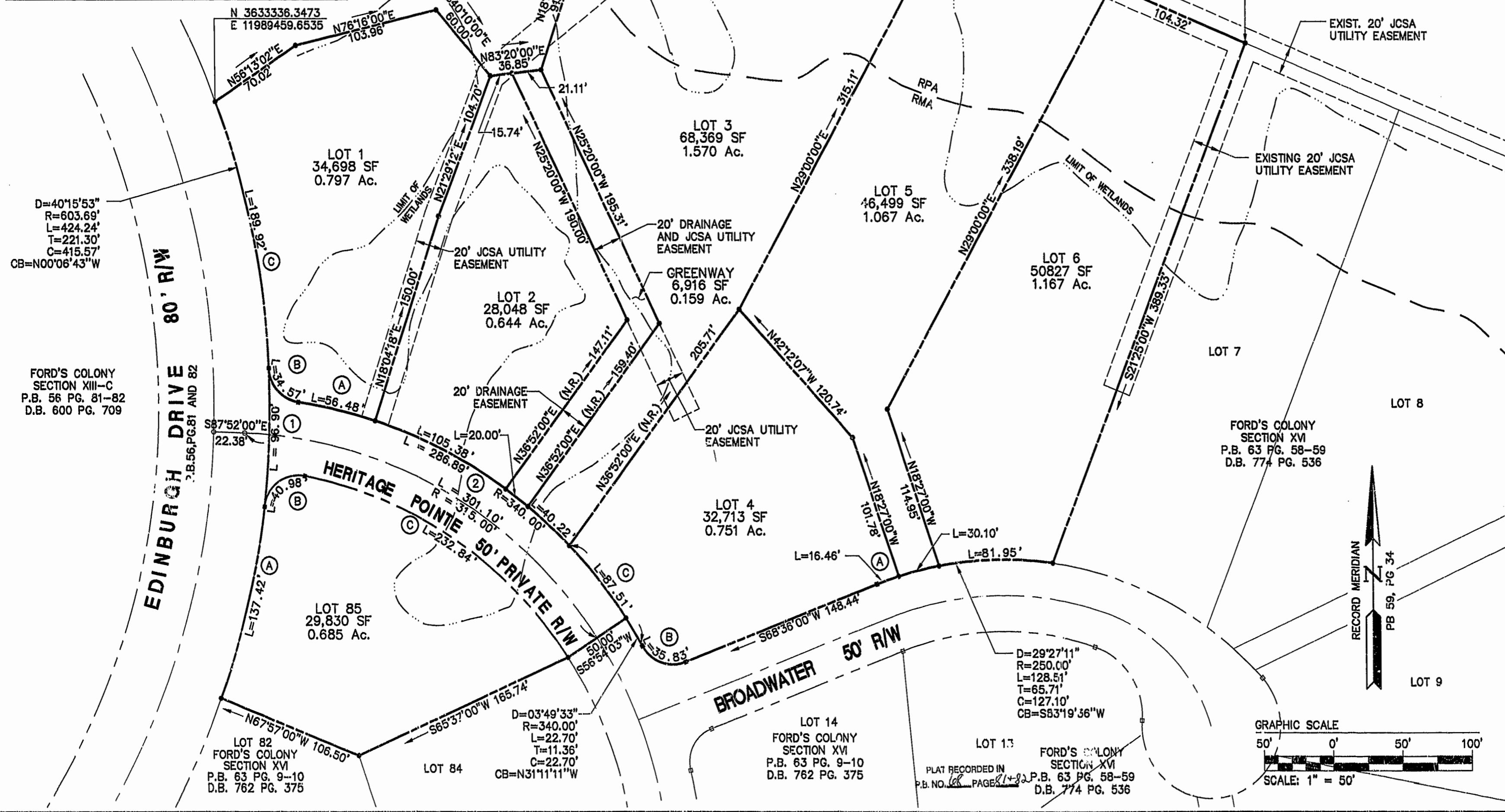
  

GREENWAY CURVE TABLE						
NUMBER	DELTA	RADIUS	LENGTH	TANGENT	CHORD	CHORD BEARING
GW	03°22'16"	340.00'	20.00'	10.01'	20.00'	N52°29'06"W

NOTES:  
 1. UNLESS OTHERWISE NOTED, ALL DRAINAGE EASEMENTS SHALL BE PRIVATE.  
 2. JAMES CITY COUNTY (JCC) GEODETIC COORDINATE REFERENCES ARE FOR GIS USE ONLY. METES AND BOUNDS ARE BASED ON FORD'S COLONY RECORD MERIDIAN.  
 3. ALL UTILITIES SHALL BE UNDERGROUND.

AREA TABULATION  
 FORD'S COLONY AT WILLIAMSBURG  
 SECTION XVI  
 LOTS 1-6, AND 85

AREA OF RESIDENTIAL LOTS	290,984 SF	6.680 AC.
AREA OF RIGHT OF WAY	14,425 SF	0.331 AC.
AREA OF GREEN WAY	6,916 SF	0.159 AC.
TOTAL AREA SUBDIVIDED	312,325 SF	7.170 AC.
NUMBER OF LOTS	7	
AVERAGE LOT SIZE	41,569 SF	0.954 AC.
SMALLEST LOT (LOT 2)	28,048 SF	0.644 AC.
LARGEST LOT (LOT 3)	68,369 SF	1.570 AC.
LOTS PER GROSS ACRE	0.976	



05.02.98-10.12. FC167P02

**CONSULTING ENGINEERS**  
 5248 Olde Towne Road, Suite 1  
 Williamsburg, Virginia 23188  
 (757) 253-0040  
 Fax (757) 220-8994

PLAT OF SUBDIVISION  
**FORD'S COLONY AT WILLIAMSBURG**  
 SECTION XVI  
 LOTS 1-6 AND 85  
 BERKELEY DISTRICT JAMES CITY COUNTY VIRGINIA



No.	DATE	REVISION / COMMENT / NOTE	BY

Recorded 18 day of March 1998  
 DOCUMENT # 980014752  
 G.T. Wilson, Jr.  
 Certified Land Surveyor

Designed SOW	Drawn SCL/EAW
Scale 1"=50'	Date 10/18/97
Project No. 5652-16	Drawing No. 2 OF 2

