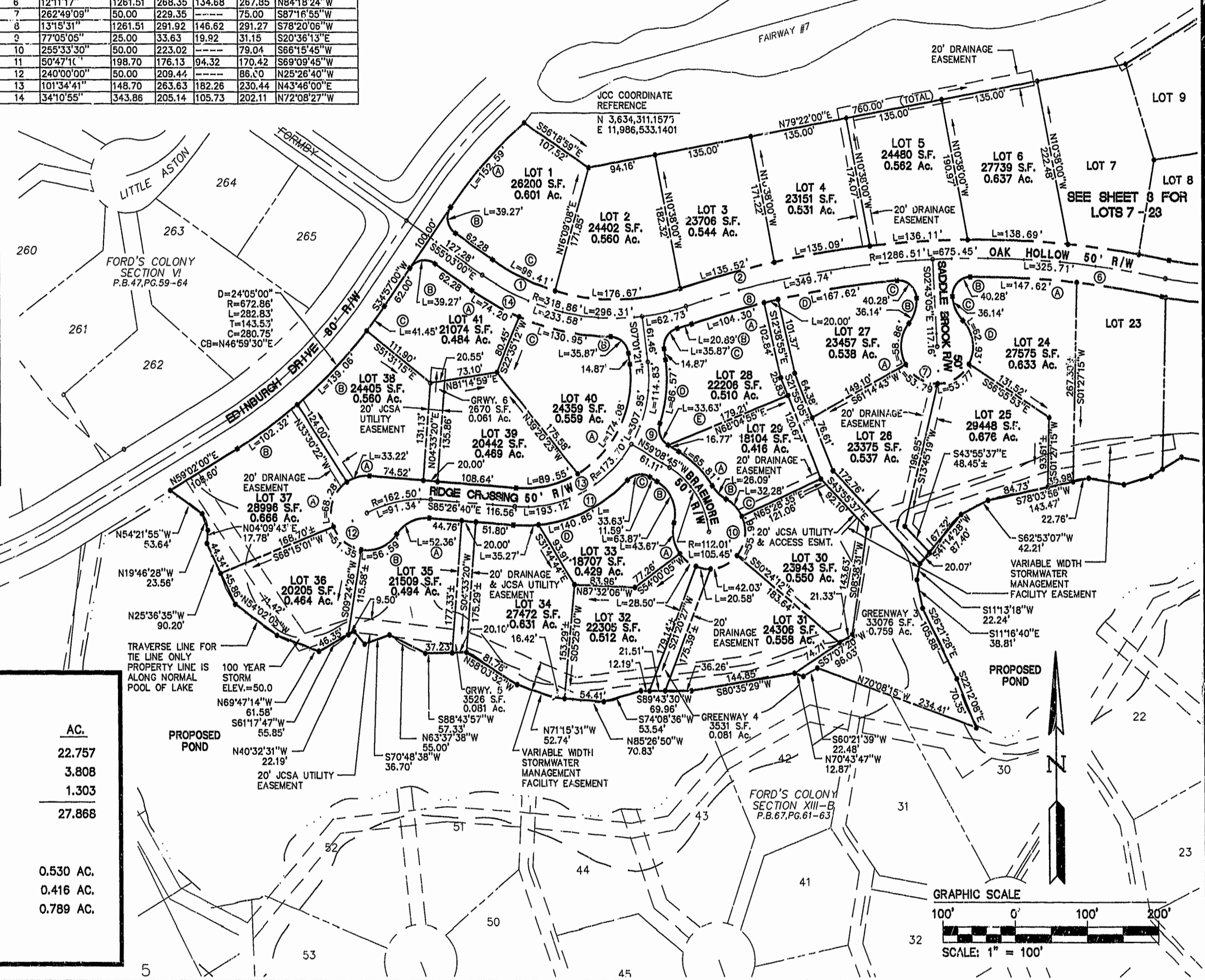


LOT CURVE TABLE						GREENWAY CURVE TABLE							
NUMBER	DELTA	RADIUS	LENGTH	TANGENT	CHORD	CHORD BEARING	NUMBER	DELTA	RADIUS	LENGTH	TANGENT	CHORD	CHORD BEARING
1A	14°24'54"	606.51	192.59	76.70	152.19	S42°09'27"W	GW3	00°54'30"	1261.51	20.00	10.00	20.00	S76°53'50"W
1B	90°00'00"	25.00	39.27	25.00	35.36	S10°03'00"E	GW4	23°34'41"	50.50	20.58	10.44	20.43	N80°26'53"W
1C	18°47'52"	293.86	96.41	48.64	95.98	S64°26'56"E	RIGHT OF WAY CURVE TABLE						
2	34°26'47"	293.86	176.67	91.10	174.02	N88°55'45"E							
3	05°55'13"	1311.51	135.52	67.82	135.46	N74°39'57"E							
4	05°54'06"	1311.51	135.09	67.60	135.03	N80°34'37"E							
5	05°56'47"	1311.51	136.11	68.12	136.05	N86°30'04"E							
6	06°03'33"	1311.51	138.69	69.41	138.63	S87°29'47"E							
24A	06°42'17"	1261.51	147.62	73.89	147.53	N87°02'54"W							
24B	92°19'03"	25.00	40.28	26.03	36.06	S43°26'26"W							
24C	41°24'35"	50.00	36.14	18.90	35.36	S23°25'23"E							
24D	72°07'05"	50.00	62.93	36.41	58.86	S08°04'08"E							
25	61°36'48"	50.00	53.77	29.81	51.21	S58°47'49"W							
26	61°38'30"	50.00	53.79	29.83	51.24	N59°34'32"W							
27A	67°26'47"	50.00	58.86	33.38	55.52	N04°58'06"E							
27B	41°24'35"	50.00	36.14	18.90	35.36	N17°59'12"E							
27C	92°19'03"	25.00	40.28	26.03	36.06	N48°52'37"W							
27D	07°36'47"	1261.51	167.62	83.93	167.50	S81°09'28"W							
28A	04°44'14"	1261.51	104.30	52.18	104.27	S74°04'28"W							
28B	03°28'52"	343.86	20.89	10.45	20.89	S73°26'47"W							
28C	82°12'34"	25.00	35.87	21.81	32.87	S34°04'56"W							
28D	24°57'40"	198.70	86.57	43.98	85.88	S05°27'29"W							
28E	77°05'05"	25.00	33.63	19.92	31.15	S20°36'13"E							
29A	27°31'15"	137.01	65.81	33.55	65.18	S45°23'08"E							
29B	29°53'30"	50.00	26.09	13.35	25.79	S46°34'15"E							
29C	36°59'35"	50.00	32.28	16.73	31.72	S43°01'13"E							
30	64°07'13"	50.00	55.96	31.32	53.08	S07°32'12"W							
31	48°09'58"	50.00	42.03	22.35	40.81	S63°40'47"W							
32	32°39'37"	50.00	28.50	14.65	28.12	N52°19'44"W							
33A	50°02'28"	50.00	43.67	23.34	42.29	N10°58'43"W							
33B	73°11'16"	50.00	63.87	37.12	59.61	N22°33'08"W							
33C	77°05'05"	25.00	33.63	19.92	31.15	S82°18'42"W							
33D	40°36'56"	198.70	140.85	73.53	137.92	S64°04'38"W							
34	10°10'15"	198.70	35.27	17.68	35.23	S89°28'13"W							
35A	50°00'00"	50.00	52.36	28.87	50.00	S64°33'20"W							
35B	64°51'06"	50.00	56.59	31.76	53.62	S68°56'53"W							
36	58°50'35"	50.00	51.35	28.20	49.12	N51°10'17"W							
37A	78°14'37"	50.00	68.28	40.67	63.10	N17°22'19"E							
37B	08°42'46"	672.86	102.32	51.26	102.22	S54°40'37"W							
38A	38°03'42"	50.00	33.22	17.25	32.61	N75°31'29"E							
38B	11°50'29"	672.86	139.06	69.78	138.81	S44°24'00"W							
39	34°30'13"	148.70	89.55	46.18	88.20	N77°18'13"E							
40A	67°04'28"	148.70	174.08	98.56	164.31	N26°30'53"E							
40B	82°12'34"	25.00	35.87	21.81	32.87	N48°07'38"W							
40C	21°49'07"	343.86	130.95	66.28	130.16	N78°19'21"W							
41A	12°21'47"	343.86	74.20	37.24	74.05	N61°13'54"W							
41B	90°00'00"	25.00	39.27	25.00	35.36	S79°57'00"W							
41C	03°31'45"	672.86	41.45	20.73	41.44	S36°42'53"W							

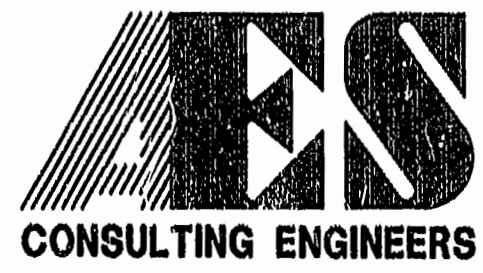
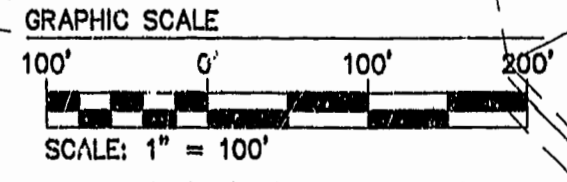
NOTE:
 1. UNLESS OTHERWISE NOTED, ALL DRAINAGE EASEMENTS SHALL BE PRIVATE.
 2. J.C.C. COORDINATES (BASED ON NAD 83) ARE FOR J.C.C. GIS SYSTEM ONLY. METES AND BOUNDS ARE BASED ON FORD'S COLONY RECORD MERIDIAN.

FORD'S COLONY COUNTRY CLUB GOLF COURSE D.B. 822, PG. 717 P.B. 65, PG. 88



AREA TABULATION

	S.F.	AC.
TOTAL AREA OF RESIDENTIAL LOTS	991,313	22.757
TOTAL AREA OF R/W	165,863	3.808
TOTAL AREA OF OPEN SPACE	56,762	1.303
TOTAL AREA SUBDIVIDED	1,213,938	27.868
TOTAL NUMBER OF LOTS	41	
AVERAGE LOT SIZE	23,070 S.F.	0.530 AC.
SMALLEST LOT (#29)	18,104 S.F.	0.416 AC.
LARGEST LOT (#20)	34,371 S.F.	0.789 AC.
GROSS LOTS PER ACRE	1.89 LOTS/ACRE	



5248 Olde Towne Road, Suite 1
 Williamsburg, Virginia 23188
 (757) 253-0040
 Fax (757) 220-8994

PLAT OF SUBDIVISION SECTION XIII-A LOTS 1-6, AND LOTS 24-41
FORD'S COLONY @ WILLIAMSBURG
 BERKELEY DISTRICT JAMES CITY COUNTY VIRGINIA



No.	DATE	REVISION / COMMENT / NOTE	BY

Designed SOW	Drawn KEG
Scale 1"=100'	Date 2/9/98
Project No. 5652-13A	
Drawing No. 2 OF 3	

02.16.98-07.52 FC13AP02