

BLDG. NUMBER	UNIT NUMBER	UNIT TYPE	ADDRESS	PARKING SPACE NO.
1100	11-1101	AR	1101 QUEENS CROSSING	251
1100	11-1102	B	1102 QUEENS CROSSING	248
1100	11-1103	A	1103 QUEENS CROSSING	246
1100	11-1104	E	1104 QUEENS CROSSING	242
1100	11-1105	C	1105 QUEENS CROSSING	240
1100	11-1106	D	1106 QUEENS CROSSING	238
1100	11-1107	F	1107 QUEENS CROSSING	236
1100	11-1108	DR	1108 QUEENS CROSSING	234
1100	11-1109	CR	1109 QUEENS CROSSING	255
1100	11-1110	ER	1110 QUEENS CROSSING	253

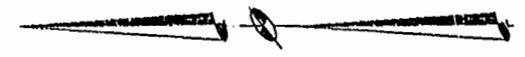
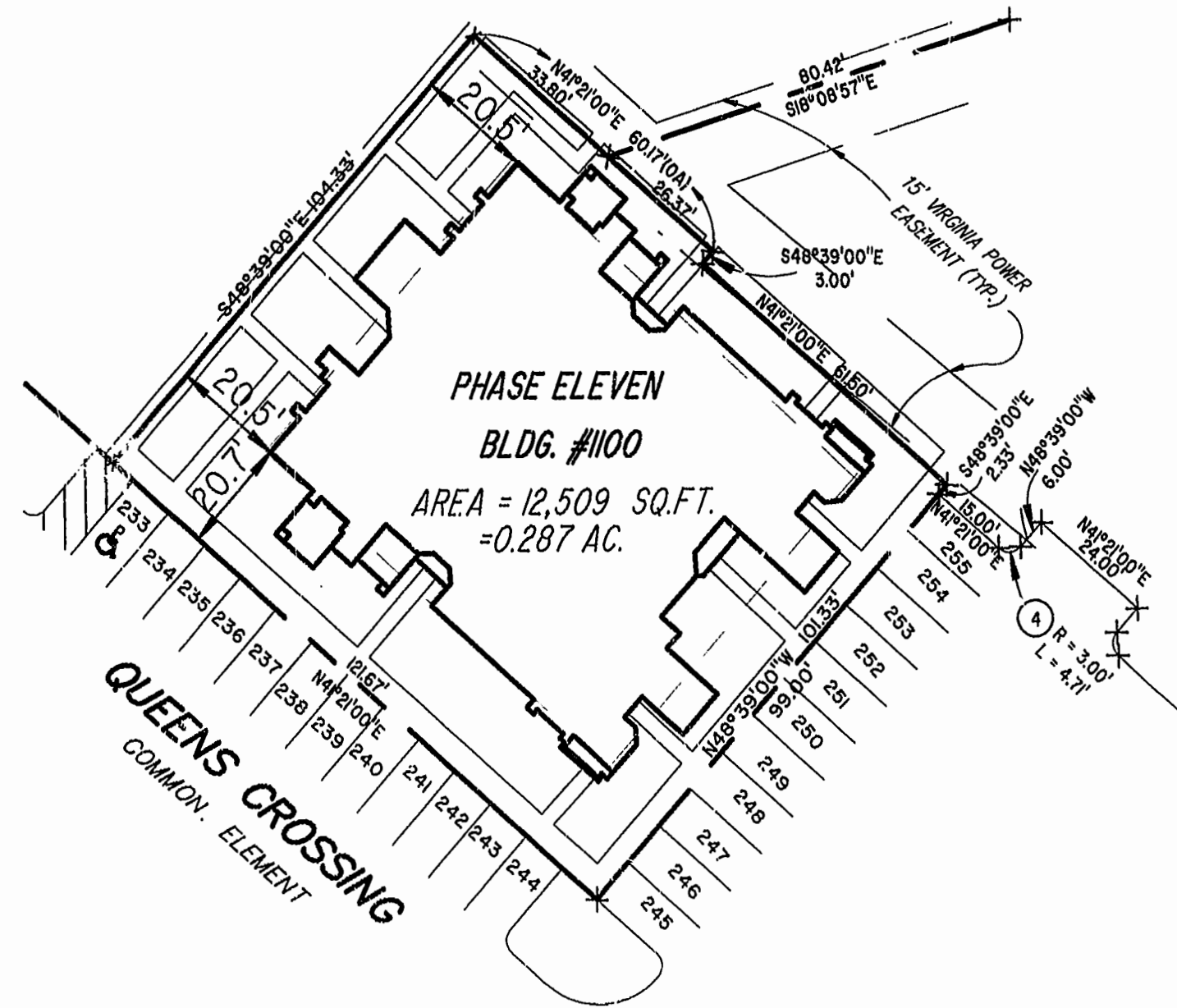


EXHIBIT # 1 PHASE ELEVEN
 LAFONTAINE CONDOMINIUMS
 AT
 WILLIAMSBURG CROSSING
PHASE ELEVEN

FOR
 UNIVERSITY SQUARE ASSOCIATES
 JAMESTOWN DISTRICT JAMES CITY COUNTY, VIRGINIA



Recorded 26 Feb 98
 DOCUMENT # GR 0013375
 Before S. Ward, Clerk of Circuit Court
 By Richard S. Martin Surveyor

Hassell & Folkes, P.C. Engineers Surveyors Planners Chesapeake, VA, 23320 (757)547-9531	SIZE: C	CONTRACT NO:	DISK/BOX: 49A/15	FILENAME: LF-P11.DWG	REV.
SCALE: 1" = 25'		DATE: 02/16/98		SHEET 4 of 4	

