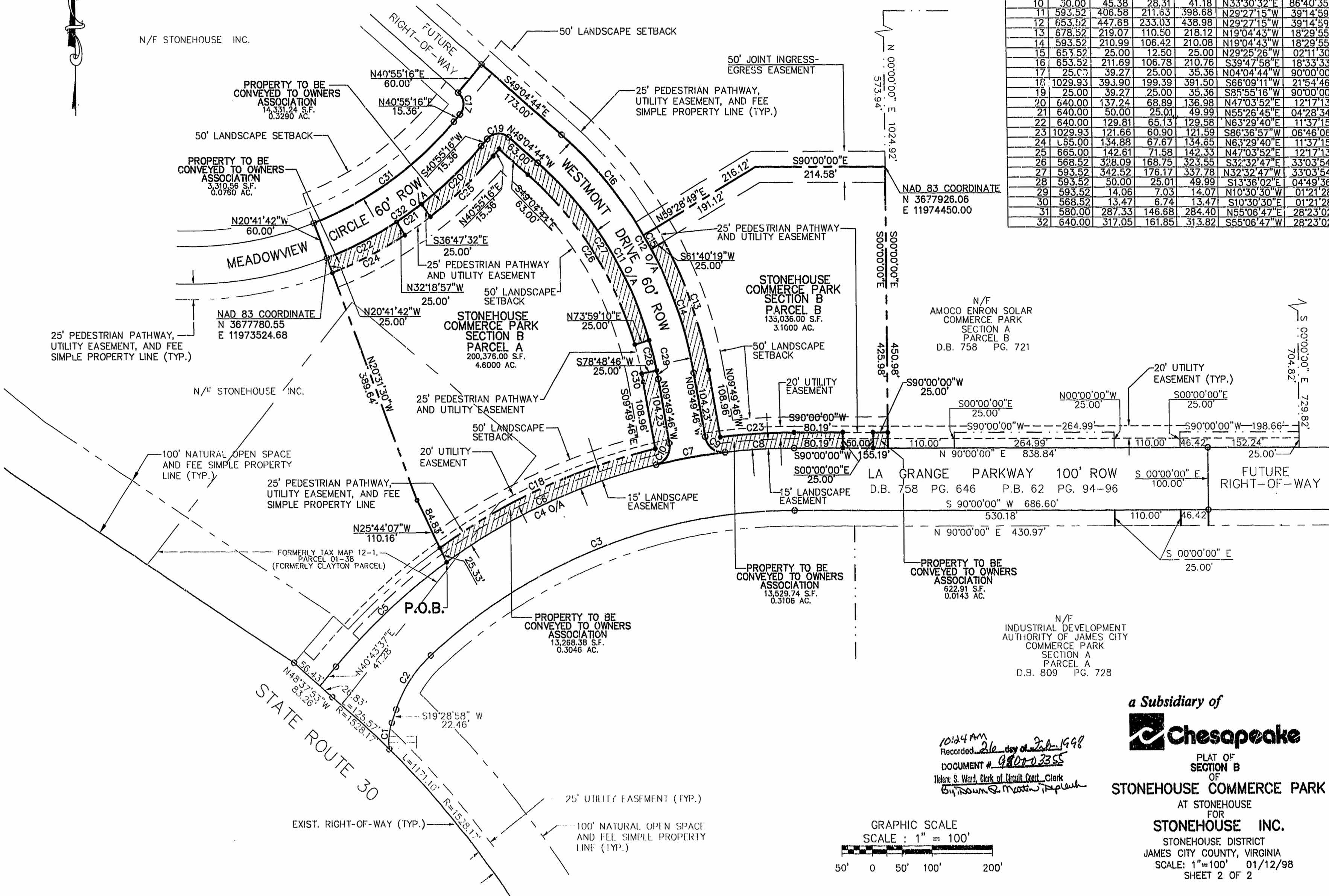


N/F STONEHOUSE INC.

N/F STONEHOUSE INC.



CURVE TABLE						
CURVE	RADIUS	LENGTH	TANGENT	CHORD	BEARING	DELTA
1	92.00	42.85	21.82	42.46	S06°08'24"W	26°41'08"
2	212.00	105.82	54.03	104.72	S33°48'54"W	28°35'53"
3	904.93	662.07	346.64	647.40	S69°02'25"W	4°55'09"
4	1004.93	864.22	460.87	837.83	S65°21'48"W	4°16'23"
5	1004.93	249.80	125.55	249.16	N47°50'53"E	14°14'32"
6	1004.93	383.72	194.23	381.40	S65°54'29"W	21°52'40"
7	1004.93	116.59	58.36	116.52	S80°10'14"W	06°38'50"
8	1004.93	114.11	57.11	114.05	S86°44'50"W	06°30'21"
9	30.00	45.38	28.31	41.18	S53°10'03"E	86°40'35"
10	30.00	45.38	28.31	41.18	N33°30'32"E	86°40'35"
11	593.52	406.58	211.63	398.68	N29°27'15"W	39°14'59"
12	653.52	447.68	233.03	438.98	N29°27'15"W	39°14'59"
13	678.52	219.07	110.50	218.12	N19°04'43"W	18°29'55"
14	593.52	210.99	106.42	210.08	N19°04'43"W	18°29'55"
15	653.52	25.00	12.50	25.00	N29°25'26"W	02°11'30"
16	653.52	211.69	106.78	210.76	S39°47'58"E	18°33'33"
17	25.00	39.27	25.00	35.36	N04°04'44"W	90°00'00"
18	1029.93	393.90	199.39	391.50	S66°09'11"W	21°54'46"
19	25.00	39.27	25.00	35.36	S85°55'16"W	90°00'00"
20	640.00	137.24	68.89	136.98	N47°03'52"E	12°17'13"
21	640.00	50.00	25.01	49.99	N55°26'45"E	04°28'34"
22	640.00	129.81	65.13	129.58	N63°29'40"E	11°37'15"
23	1029.93	121.66	60.90	121.59	S86°36'57"W	06°46'06"
24	655.00	134.88	67.67	134.85	N63°29'40"E	11°37'15"
25	665.00	142.61	71.58	142.33	N47°03'52"E	12°17'13"
26	568.52	328.09	168.75	323.55	S32°32'47"E	33°03'54"
27	593.52	342.52	176.17	337.78	N32°32'47"W	33°03'54"
28	593.52	50.00	25.01	49.99	S13°36'02"E	04°49'36"
29	593.52	14.06	7.03	14.07	N10°30'30"W	01°21'28"
30	568.52	13.47	6.74	13.47	S10°30'30"E	01°21'28"
31	580.00	287.33	146.68	284.40	N55°06'47"E	28°23'02"
32	640.00	317.05	161.85	313.82	S55°06'47"W	28°23'02"

NAD 83 COORDINATE  
N 3677926.06  
E 11974450.00

NAD 83 COORDINATE  
N 3677780.55  
E 11973524.68

LA GRANGE PARKWAY 100' ROW  
D.B. 758 PG. 646 P.B. 62 PG. 94-96  
S 90°00'00" W 686.60'  
530.18'

FUTURE RIGHT-OF-WAY  
S 00°00'00" E 100.00'  
110.00' 46.42' 152.24'

a Subsidiary of  
 Chesapeake  
 PLAT OF SECTION B OF STONEHOUSE COMMERCE PARK AT STONEHOUSE FOR STONEHOUSE INC. STONEHOUSE DISTRICT JAMES CITY COUNTY, VIRGINIA SCALE: 1"=100' 01/12/98 SHEET 2 OF 2

10:24 AM  
 Recorded 26 day of Feb 1998  
 DOCUMENT # 98070355  
 Helene S. Ward, Clerk of Circuit Court, Clerk  
 by Dawn R. Martin, Deputy Clerk

