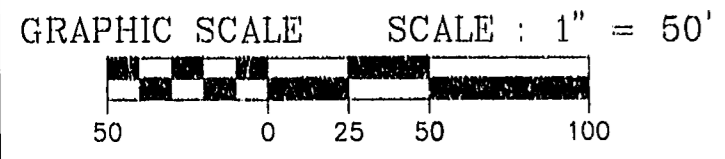
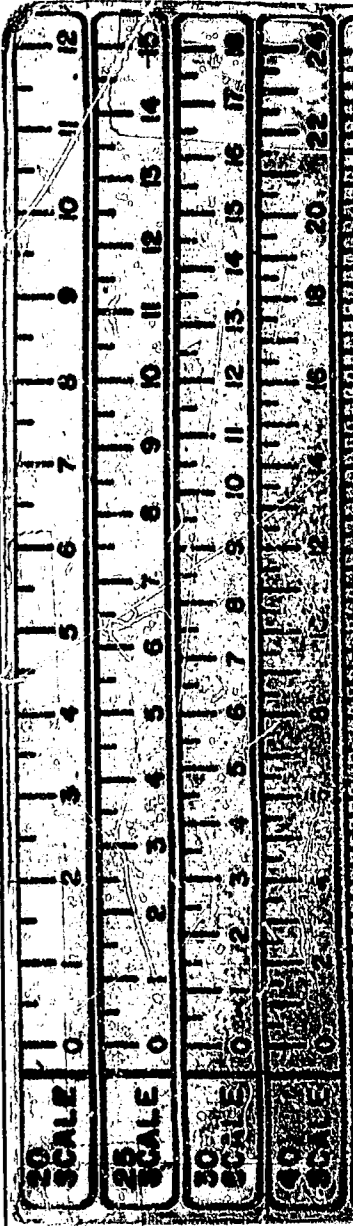
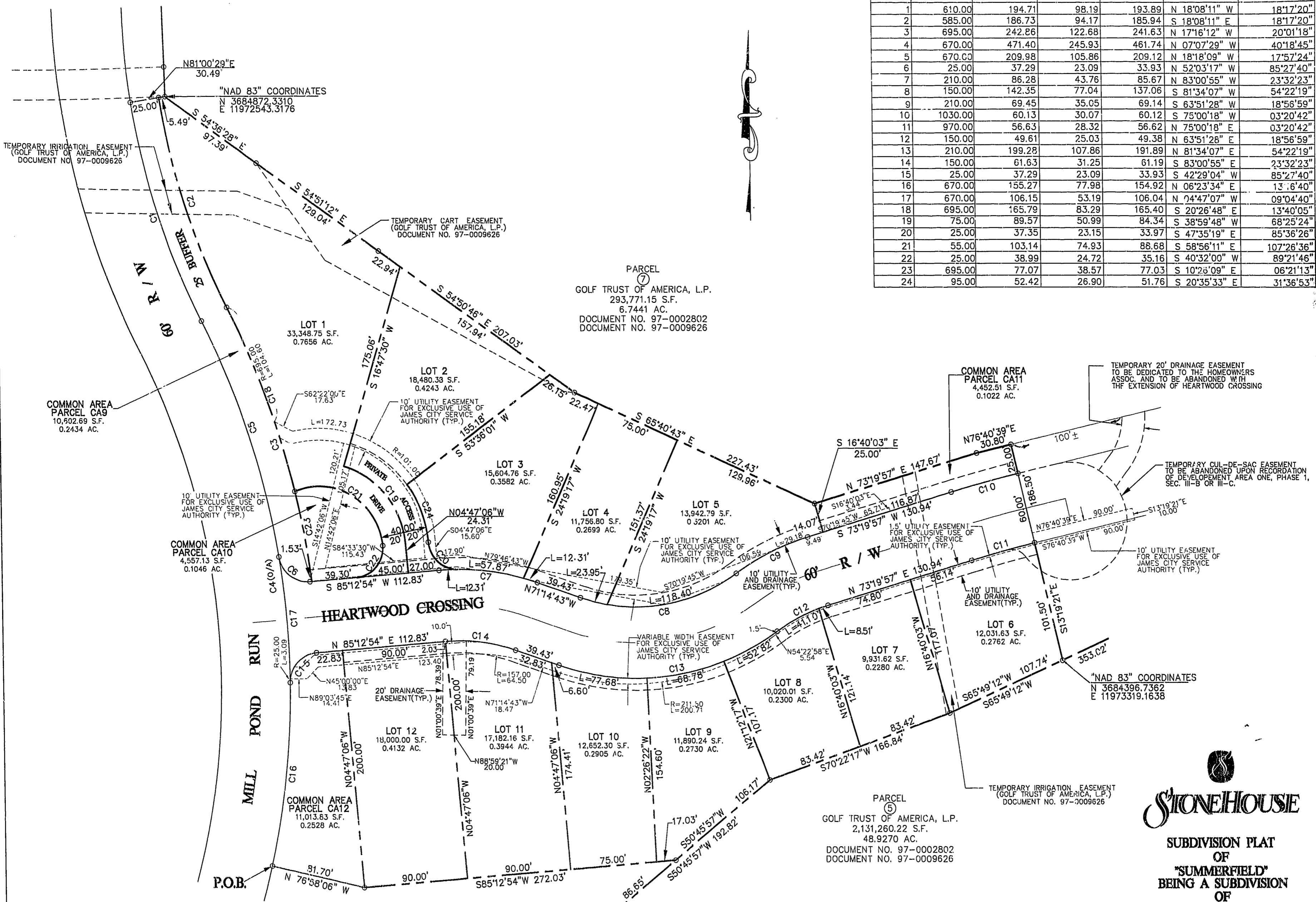


CURVE	RADIUS	LENGTH	TANGENT	CHORD	BEARING	DELTA
1	610.00	194.71	98.19	193.89	N 18°08'11" W	18°17'20"
2	585.00	186.73	94.17	185.94	S 18°08'11" E	18°17'20"
3	695.00	242.86	122.68	241.63	N 17°16'12" W	20°01'18"
4	670.00	471.40	245.93	461.74	N 07°07'29" W	40°18'45"
5	670.00	209.98	105.86	209.12	N 18°18'09" W	17°57'24"
6	25.00	37.29	23.09	33.93	N 52°03'17" W	85°27'40"
7	210.00	86.28	43.76	85.67	N 83°00'55" W	23°32'23"
8	150.00	142.35	77.04	137.06	S 81°34'07" W	54°22'19"
9	210.00	69.45	35.05	69.14	S 63°51'28" W	18°56'59"
10	1030.00	60.13	30.07	60.12	S 75°00'18" W	03°20'42"
11	970.00	56.63	28.32	56.62	N 75°00'18" E	03°20'42"
12	150.00	49.61	25.03	49.38	N 63°51'28" E	18°56'59"
13	210.00	199.28	107.86	191.89	N 81°34'07" E	54°22'19"
14	150.00	61.63	31.25	61.19	S 83°00'55" E	23°32'23"
15	25.00	37.29	23.09	33.93	S 42°29'04" W	85°27'40"
16	670.00	155.27	77.98	154.92	N 06°23'34" E	13°16'40"
17	670.00	106.15	53.19	106.04	N 04°47'07" W	09°04'40"
18	695.00	165.79	83.29	165.40	S 20°26'48" E	13°40'05"
19	75.00	89.57	50.99	84.34	S 38°59'48" W	68°25'24"
20	25.00	37.35	23.15	33.97	S 47°35'19" E	85°36'26"
21	55.00	103.14	74.93	86.68	S 58°56'11" E	107°26'36"
22	25.00	38.99	24.72	35.16	S 40°32'00" W	89°21'46"
23	695.00	77.07	38.57	77.03	S 10°26'09" E	06°21'13"
24	95.00	52.42	26.90	51.76	S 20°35'33" E	31°36'53"



PARCEL
 ⑤
 GOLF TRUST OF AMERICA, L.P.
 2,131,260.22 S.F.
 48.9270 AC.
 DOCUMENT NO. 97-0002802
 DOCUMENT NO. 97-0009626

8:59 Am
 Recorded 12 days of Feb. 1998
 DOCUMENT # 98002508
 Helen S. Ward, Clerk
 by Claudia H. Binkholz, Dep. Clerk

STONEHOUSE
 SUBDIVISION PLAT
 OF
 "SUMMERFIELD"
 BEING A SUBDIVISION
 OF
 STONEHOUSE LIMITED LIABILITY
 COMPANY
 STONEHOUSE DISTRICT, JAMES CITY COUNTY
 DATE: 12/08/97 SCALE: 1"=50'
 SHEET 2 OF 2