

PLAT OF SUBDIVISION  
**WATERFORD**  
AT  
**POWHATAN SECONDARY**  
PHASE ONE  
BERKELEY DISTRICT  
JAMES CITY COUNTY, VIRGINIA

DATE: 9/25/97  
REVISED: 11/24/97

SHEET 4 OF 4

SCALE: 1"=40'

PROJECT NO: 97-008

DRAWN BY: PAUL MICHAEL



**SLEDD & ASSOCIATES, P.C.**  
ENGINEERS PLANNERS SURVEYORS  
11832 ROCK LANDING DRIVE, SUITE 203  
NEWPORT NEWS, VIRGINIA 23606  
(757) 873-3386

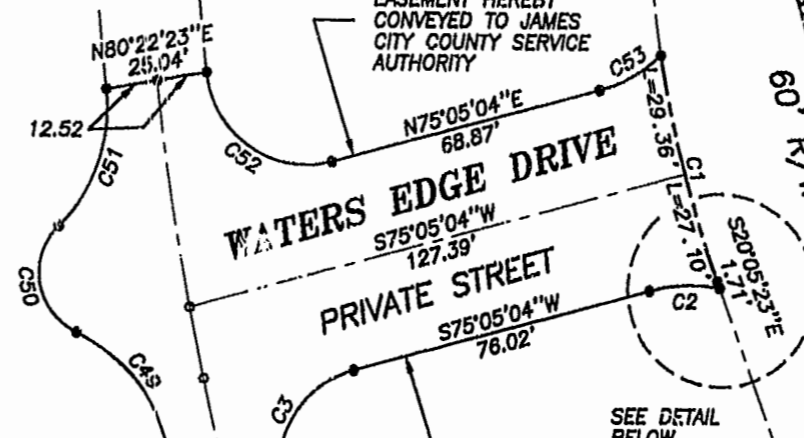
PLAT BOOK 66, PAGE 70



25' UTILITY  
EASEMENT HEREBY  
CONVEYED TO JAMES  
CITY COUNTY SERVICE  
AUTHORITY  
SEE SHEET 2

VARIABLE WIDTH UTILITY  
EASEMENT HEREBY  
CONVEYED TO JAMES  
CITY COUNTY SERVICE  
AUTHORITY

POWHATAN SECONDARY  
60' R/W

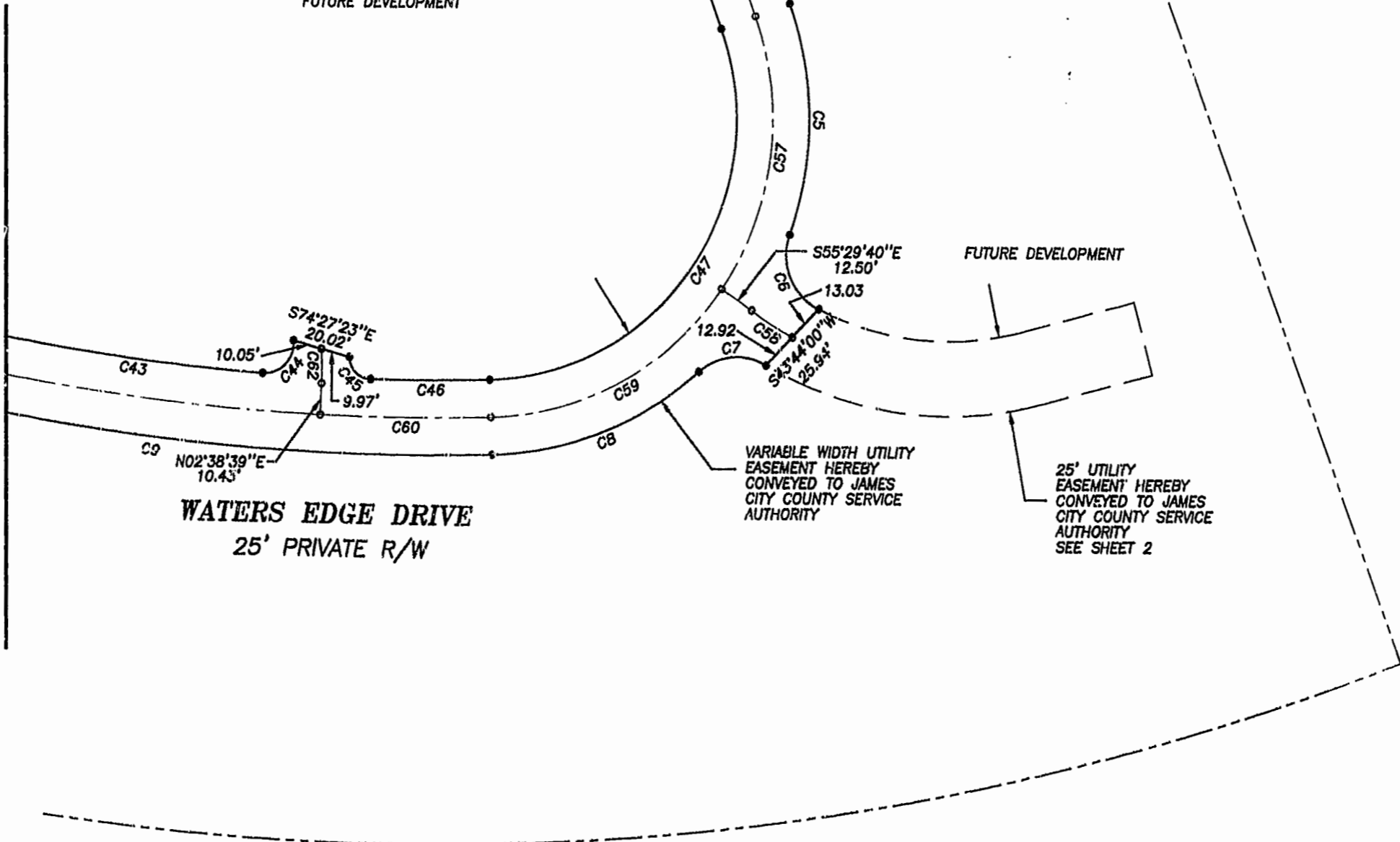


SEE DETAIL  
BELOW

FUTURE DEVELOPMENT

FUTURE DEVELOPMENT

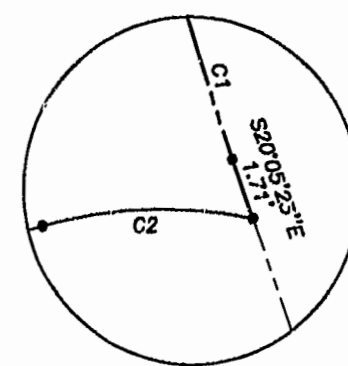
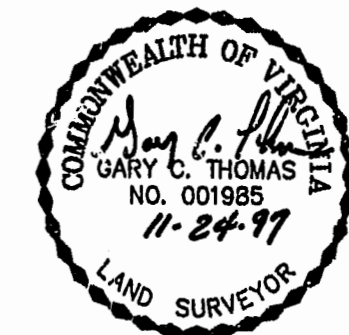
MATCH LINE - SEE SHEET 2



**WATERS EDGE DRIVE**  
25' PRIVATE R/W

VARIABLE WIDTH UTILITY  
EASEMENT HEREBY  
CONVEYED TO JAMES  
CITY COUNTY SERVICE  
AUTHORITY

25' UTILITY  
EASEMENT HEREBY  
CONVEYED TO JAMES  
CITY COUNTY SERVICE  
AUTHORITY  
SEE SHEET 2



DETAIL-N.T.S.

RECORDED  
INDEXED

Recorded 18 day of December 1997  
DOCUMENT # 27001998d 12/85  
L. J. ...

GRAPHIC SCALE



SCALE: 1"= 40'