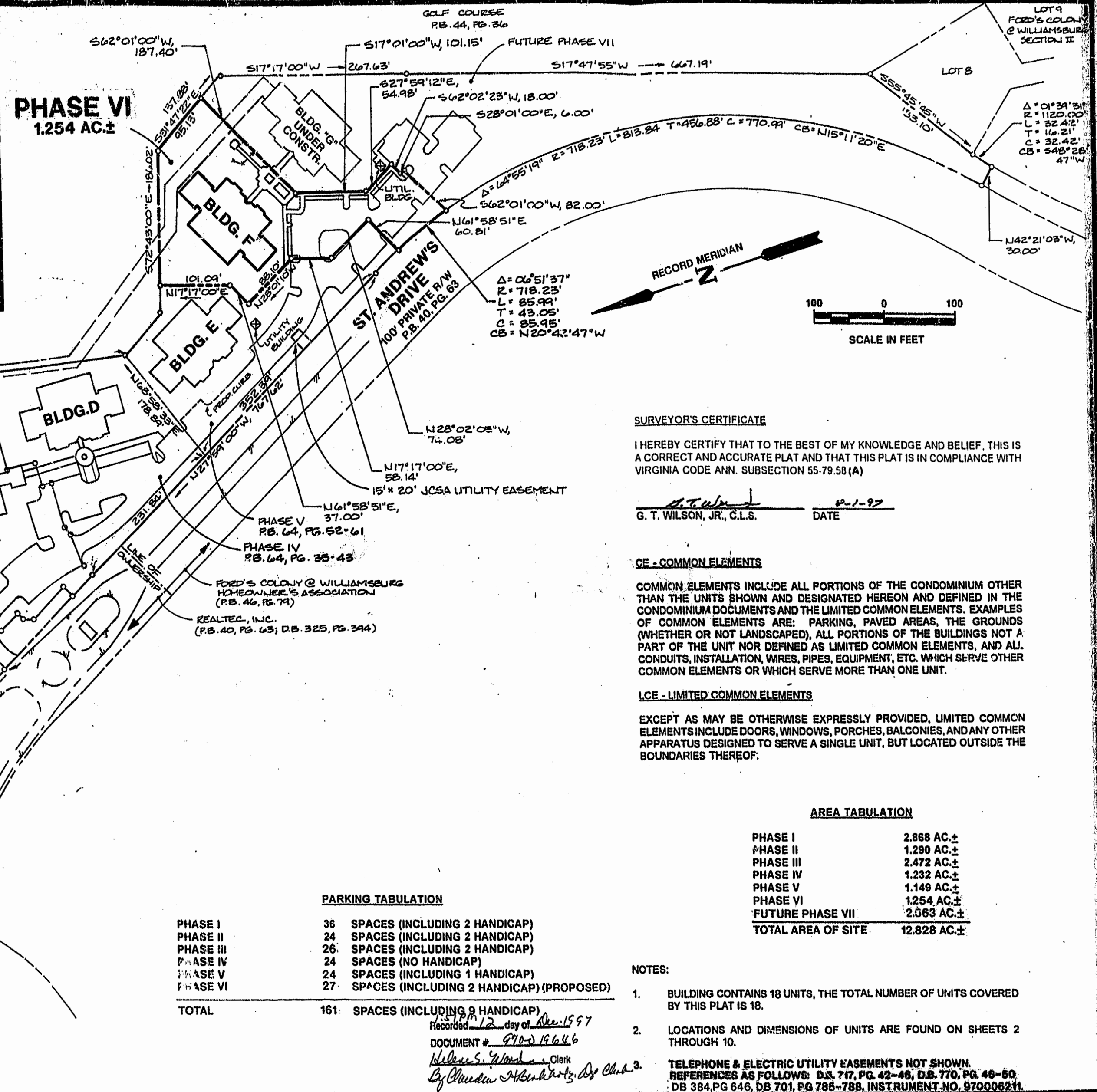


LOCATION MAP: SCALE: 1" = 2000'



**SURVEYOR'S CERTIFICATE**

I HEREBY CERTIFY THAT TO THE BEST OF MY KNOWLEDGE AND BELIEF, THIS IS A CORRECT AND ACCURATE PLAT AND THAT THIS PLAT IS IN COMPLIANCE WITH VIRGINIA CODE ANN. SUBSECTION 55-79.58 (A)

*G. T. Wilson, Jr.*  
 G. T. WILSON, JR., C.L.S. DATE 8-1-97

**CE - COMMON ELEMENTS**

COMMON ELEMENTS INCLUDE ALL PORTIONS OF THE CONDOMINIUM OTHER THAN THE UNITS SHOWN AND DESIGNATED HEREON AND DEFINED IN THE CONDOMINIUM DOCUMENTS AND THE LIMITED COMMON ELEMENTS. EXAMPLES OF COMMON ELEMENTS ARE: PARKING, PAVED AREAS, THE GROUNDS (WHETHER OR NOT LANDSCAPED), ALL PORTIONS OF THE BUILDINGS NOT A PART OF THE UNIT NOR DEFINED AS LIMITED COMMON ELEMENTS, AND ALL CONDUITS, INSTALLATION, WIRES, PIPES, EQUIPMENT, ETC. WHICH SERVE OTHER COMMON ELEMENTS OR WHICH SERVE MORE THAN ONE UNIT.

**LCE - LIMITED COMMON ELEMENTS**

EXCEPT AS MAY BE OTHERWISE EXPRESSLY PROVIDED, LIMITED COMMON ELEMENTS INCLUDE DOORS, WINDOWS, PORCHES, BALCONIES, AND ANY OTHER APPARATUS DESIGNED TO SERVE A SINGLE UNIT, BUT LOCATED OUTSIDE THE BOUNDARIES THEREOF.

**AREA TABULATION**

PHASE I	2.868 AC.±
PHASE II	1.290 AC.±
PHASE III	2.472 AC.±
PHASE IV	1.232 AC.±
PHASE V	1.149 AC.±
PHASE VI	1.254 AC.±
FUTURE PHASE VII	2.563 AC.±
<b>TOTAL AREA OF SITE</b>	<b>12.828 AC.±</b>

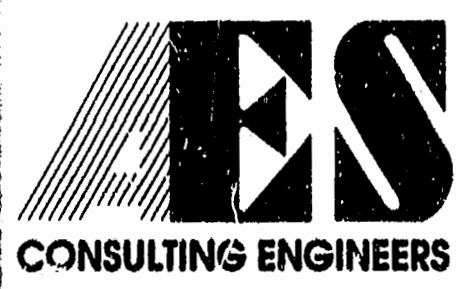
**PARKING TABULATION**

PHASE I	36 SPACES (INCLUDING 2 HANDICAP)
PHASE II	24 SPACES (INCLUDING 2 HANDICAP)
PHASE III	26 SPACES (INCLUDING 2 HANDICAP)
PHASE IV	24 SPACES (NO HANDICAP)
PHASE V	24 SPACES (INCLUDING 1 HANDICAP)
PHASE VI	27 SPACES (INCLUDING 2 HANDICAP) (PROPOSED)
<b>TOTAL</b>	<b>161 SPACES (INCLUDING 8 HANDICAP)</b>

**NOTES:**

- BUILDING CONTAINS 18 UNITS, THE TOTAL NUMBER OF UNITS COVERED BY THIS PLAT IS 18.
  - LOCATIONS AND DIMENSIONS OF UNITS ARE FOUND ON SHEETS 2 THROUGH 10.
- TELEPHONE & ELECTRIC UTILITY EASEMENTS NOT SHOWN. REFERENCES AS FOLLOWS: D.B. 717, PG. 42-46, D.B. 770, PG. 46-50, DB 384, PG. 646, DB 701, PG. 785-788, INSTRUMENT NO. 970006211.

Recorded 12 day of Dec 1997  
 DOCUMENT # 970-19646  
 William S. Wilson, Clerk  
 By *Chadwick H. ...* D. Club 3.



5248 Olde Towne Road, Suite 1  
 Williamsburg, Virginia 23188  
 (804) 253-0040  
 Fax (804) 220-8994

**EXHIBIT A-2**

**PLAT OF CONDOMINIUM,  
 MANOR CLUB  
 AT FORD'S COLONY  
 PHASE VI**

OWNER/DEVELOPER: MARRIOTT OWNERSHIP RESORTS, INC.  
 POWHATAN DISTRICT JAMES CITY COUNTY VIRGINIA



PLAT RECORDED IN	
P.B. NO. 68 PAGE 10-19	
1	11/97 ADDED UTILITY EASEMENT REFERENCES PER MARRIOTT
No.	DATE REVISION / COMMENT / NOTE BY

Designed ADS	Drawn MMM/RMJ
Scale 1"=100'	Date 8/1/97
Project No. 7739-CE	
Drawing No. 1 of 10	