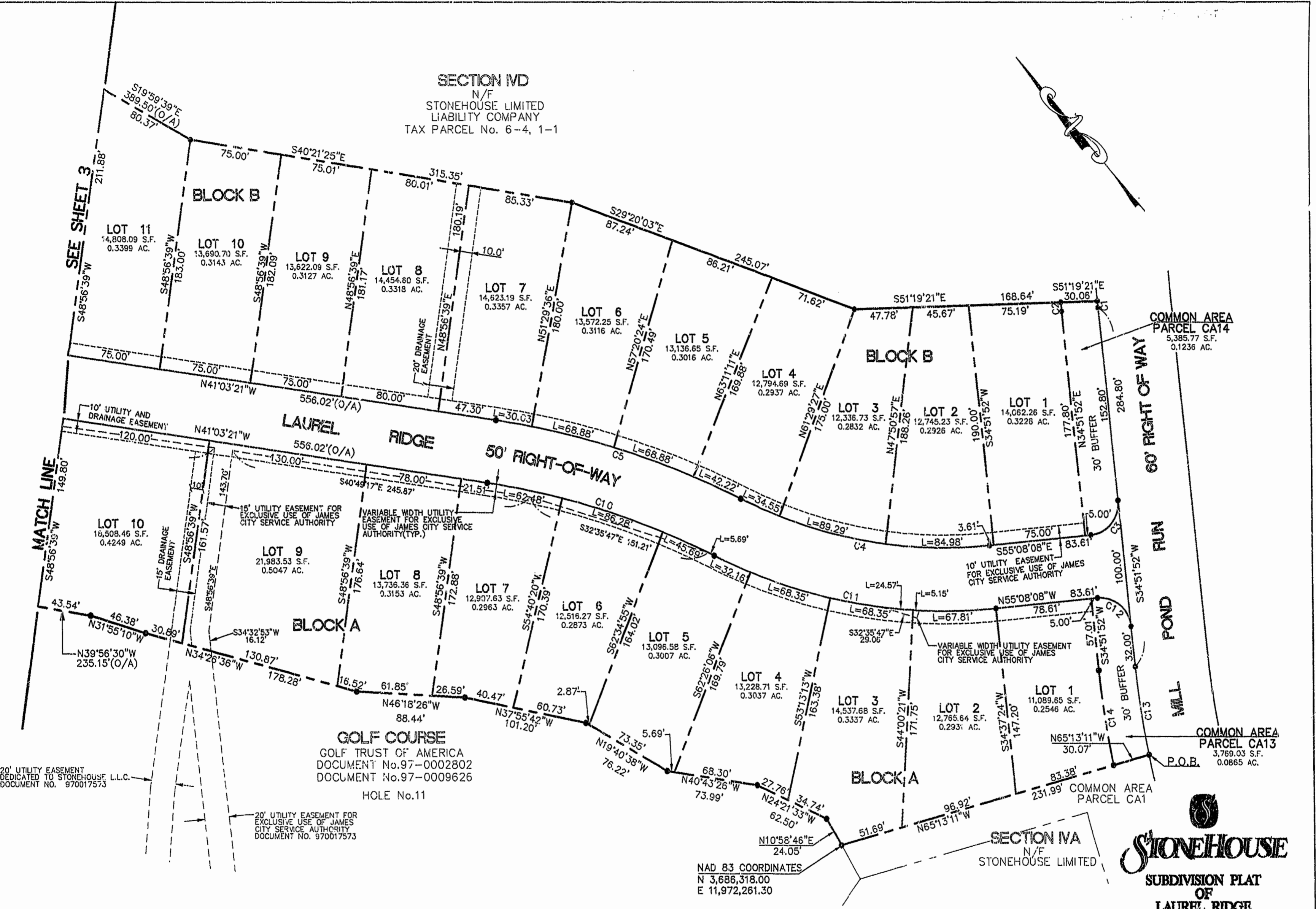
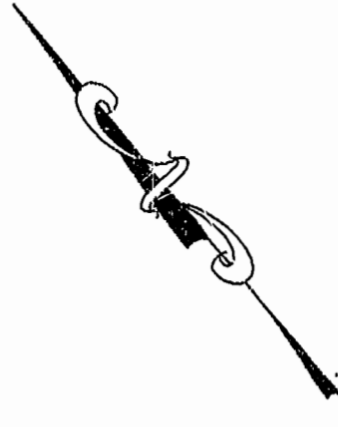


SECTION IV D
N/F
STONEHOUSE LIMITED
LIABILITY COMPANY
TAX PARCEL No. 6-4, 1-1



20' UTILITY EASEMENT
DEDICATED TO STONEHOUSE L.L.C.
DOCUMENT NO. 970017573

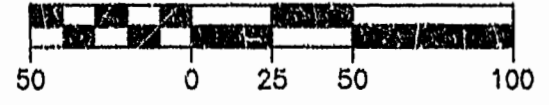
20' UTILITY EASEMENT FOR
EXCLUSIVE USE OF JAMES
CITY SERVICE AUTHORITY
DOCUMENT NO. 970017573

GOLF COURSE
GOLF TRUST OF AMERICA
DOCUMENT No.97-0002802
DOCUMENT No.97-0009626
HOLE No.11

NAD 83 COORDINATES
N 3,686,318.00
E 11,972,261.30

SECTION IV A
N/F
STONEHOUSE LIMITED

GRAPHIC SCALE SCALE : 1" = 50'



111.34 AM
Recorded _____ of Dec. 1997
DOCUMENT 970019058
W. S. Ward Clerk
By Claudia A. Bickelitz De Clerk



STONEHOUSE
SUBDIVISION PLAT
OF
LAUREL RIDGE
BEING A SUBDIVISION
OF
STONEHOUSE LIMITED LIABILITY
COMPANY
STONEHOUSE DISTRICT, JAMES CITY COUNTY
DATE: 09/29/97 SCALE: 1" = 50'
SHEET 2 OF 3

