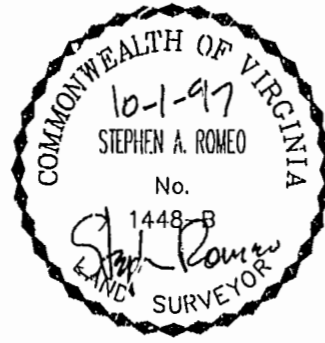
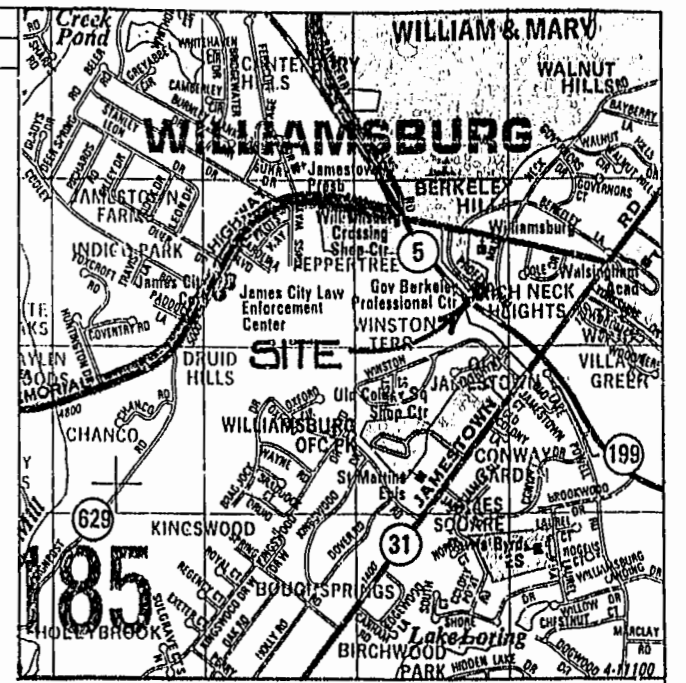


I CERTIFY THAT THIS PLAT IS ACCURATE AND COMPLIES WITH THE PROVISIONS OF SECTION 55 - 79.58(A) AND (B) OF THE CODE OF VIRGINIA 1950 AS AMENDED AND THAT ALL UNITS DEPICTED HEREON HAVE BEEN SUBSTANTIALLY COMPLETED.



CURVE	RADIUS	LENGTH	TANGENT	CHORD	BEARING	DELTA
C1	25.00'	4.48'	2.25'	4.48'	S62°00'35"E	10°16'35"



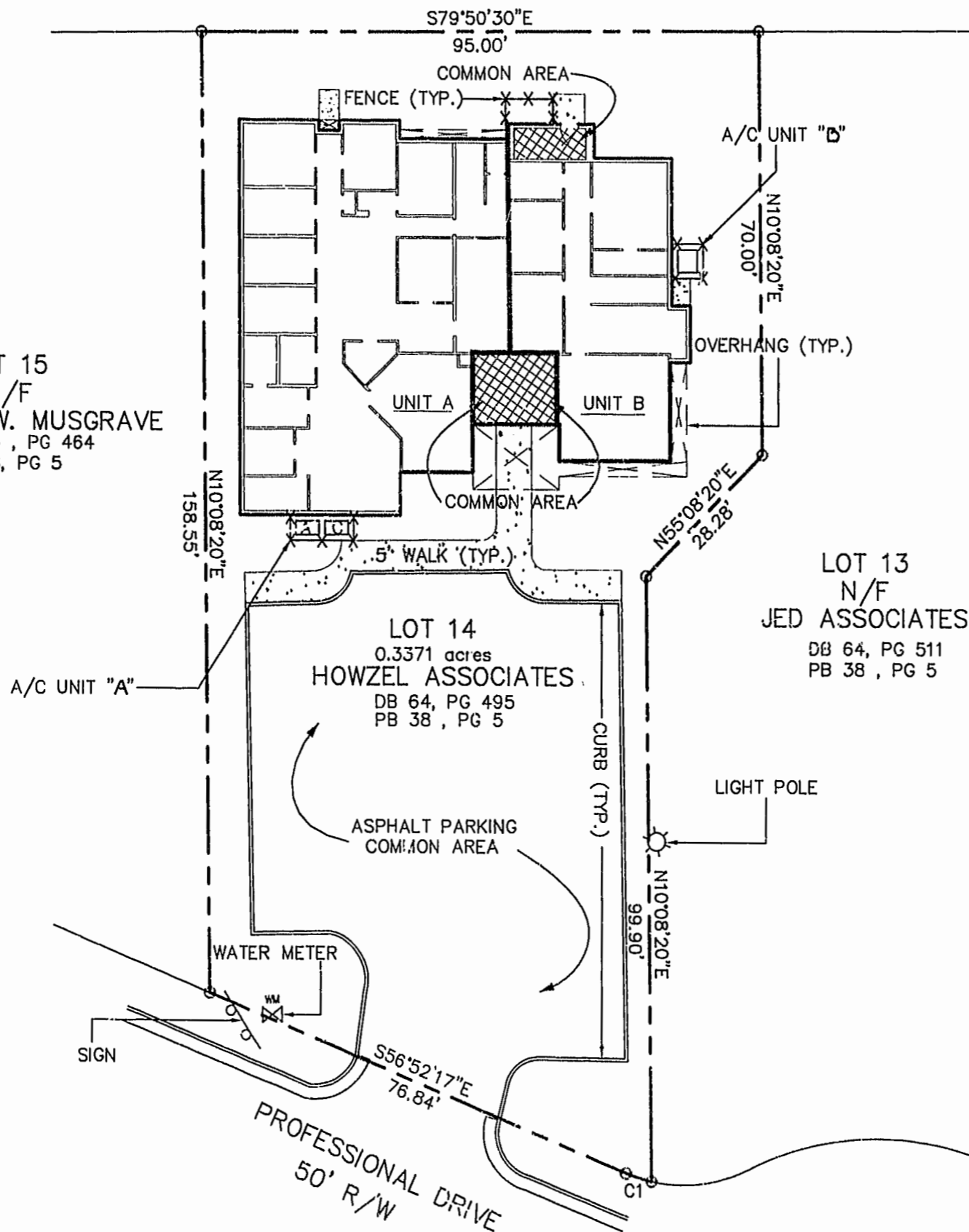
VICINITY MAP
COPYRIGHT ADC THE MAP PEOPLE
PERMITTED USE NO. 20197473

N/F
WILLIAMSBURG CHRISTAIN
CHURCH
DB 43, PG 153
J.C.C.
DB 114, PG 548

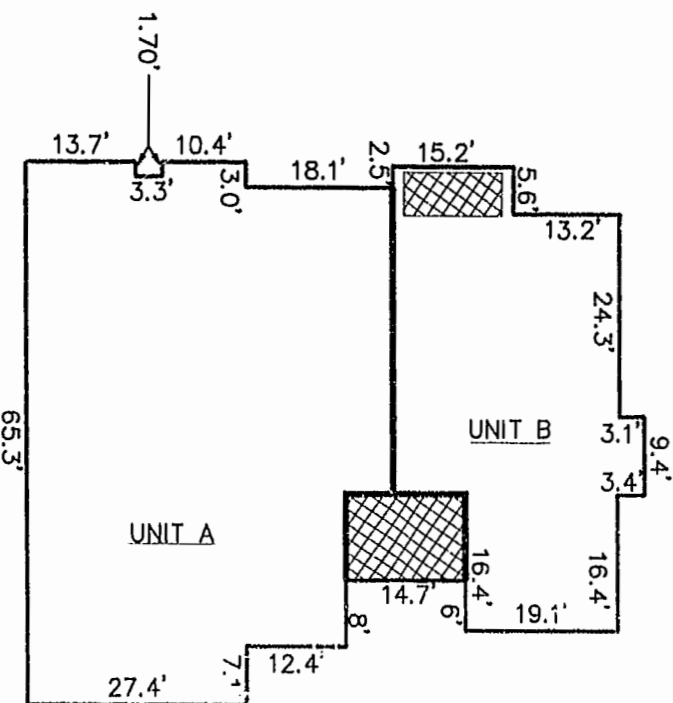
LOT 15
N/F
JOSEPH W. MUSGRAVE
DB 63, PG 464
PB 38, PG 5

LOT 13
N/F
JED ASSOCIATES
DB 64, PG 511
PB 38, PG 5

LOT 14
0.3371 acres
HOWZEL ASSOCIATES
DB 64, PG 495
PB 38, PG 5

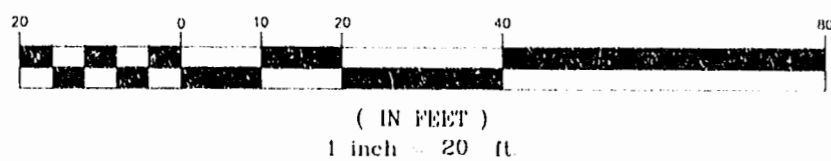


BUILDING AREA
UNIT A 2,551 sq. ft.
UNIT B 1,202 sq. ft.
COMMON AREA 221 sq. ft.



1 STORY BRICK BUILDING
HORIZONTAL BOUNDARY DETAIL

GRAPHIC SCALE



NOTE:
VERTICAL BOUNDARY EXTENDS
FROM SUB-FLOOR TO BOTTOM OF
ROOF FRAMING

3:34 pm
29
OCT 1997
978-0031
M. S. ...

PLAT NO. 67 PAGE 27

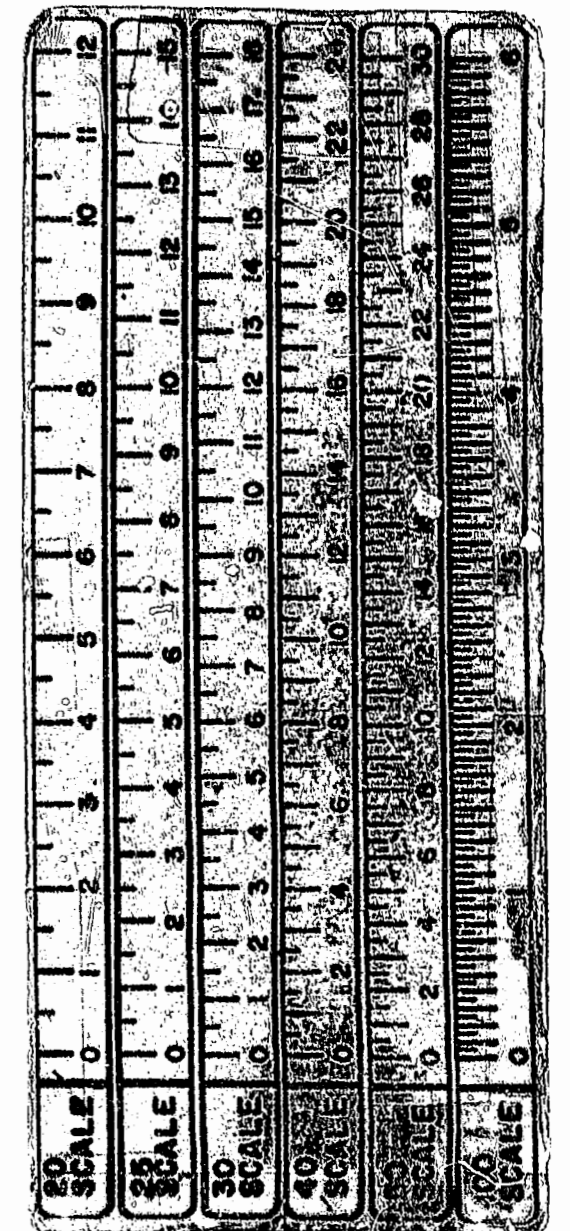
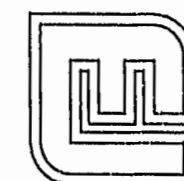


EXHIBIT B
TO THE DECLARATION OF
BERKELEY MEDICAL CONDOMINIUM
STANDING IN THE NAME OF
HOWZEL ASSOCIATES

DATE: SEPTEMBER 29, 1997

SCALE: 1" = 20'



Langley and McDonald, P.C.

Engineers - Surveyors - Planners
Landscape Architects - Environmental Consultants

VIRGINIA BEACH

WILLIAMSBURG