



BLDG. NUMBER	UNIT NUMBER	UNIT TYPE	ADDRESS	PARKING SPACE NO.
1500	15-1501	AR	1501 QUEENS WAY	339
1500	15-1502	B	1502 QUEENS WAY	337
1500	15-1503	A	1503 QUEENS WAY	335
1500	15-1504	E	1504 QUEENS CROSSING	333
1500	15-1505	C	1505 QUEENS CROSSING	331
1500	15-1506	D	1506 QUEENS CROSSING	329
1500	15-1507	F	1507 QUEENS CROSSING	327
1500	15-1508	DR	1508 QUEENS CROSSING	325
1500	15-1509	CR	1509 QUEENS CROSSING	343
1500	15-1510	ER	1510 QUEENS WAY	341

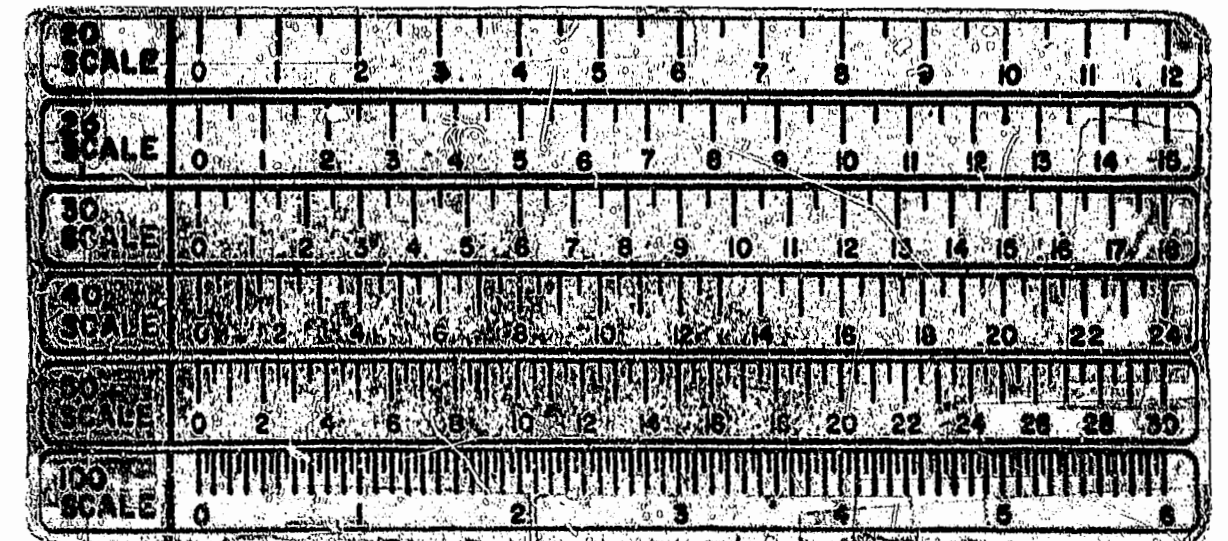
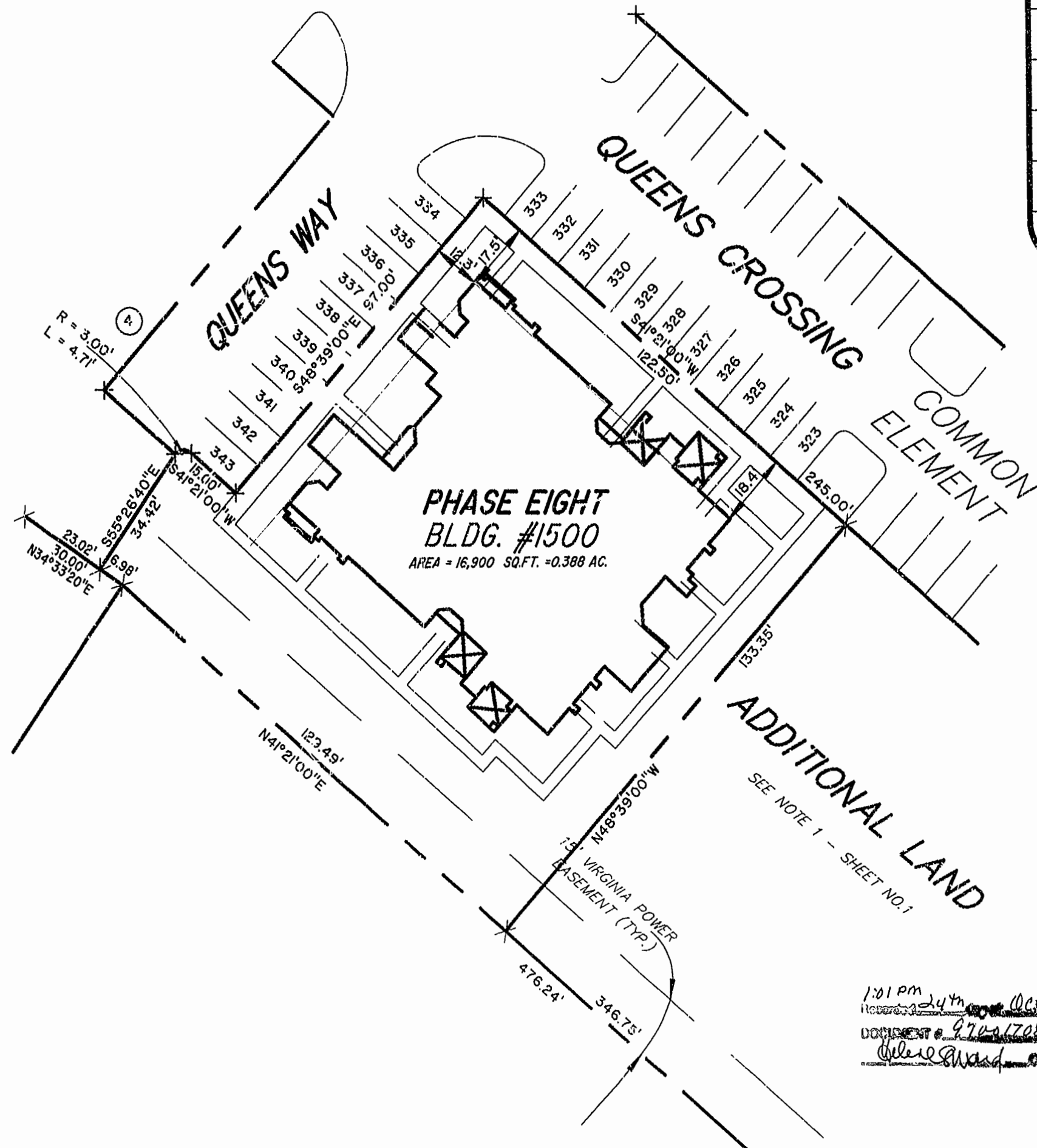
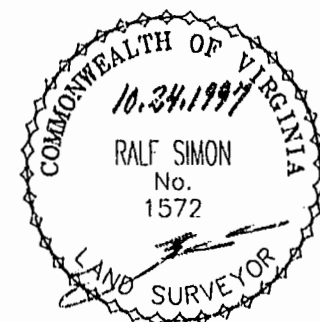


EXHIBIT # 1 PHASE EIGHT
 LAFONTAINE CONDOMINIUMS
 AT
 WILLIAMSBURG CROSSING
PHASE EIGHT
 FOR
 UNIVERSITY SQUARE ASSOCIATES
 JAMESTOWN DISTRICT JAMES CITY COUNTY, VIRGINIA

1:01 PM
 Received 24th Oct 1997
 DOCUMENT # 970-1708
 [Signature]



Hassell & Folkes, P.C. Engineers Surveyors Planners Chesapeake, VA. 23320 (757) 547-9531	SIZE C	CONTRACT NO.	DISK/BOX 18/15	FILENAME LF-P8.DWG	REV.
SCALE: 1" = 25'		DATE: 10/16/97		SHEET 4 of 4	