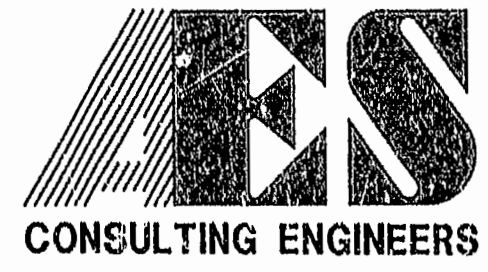
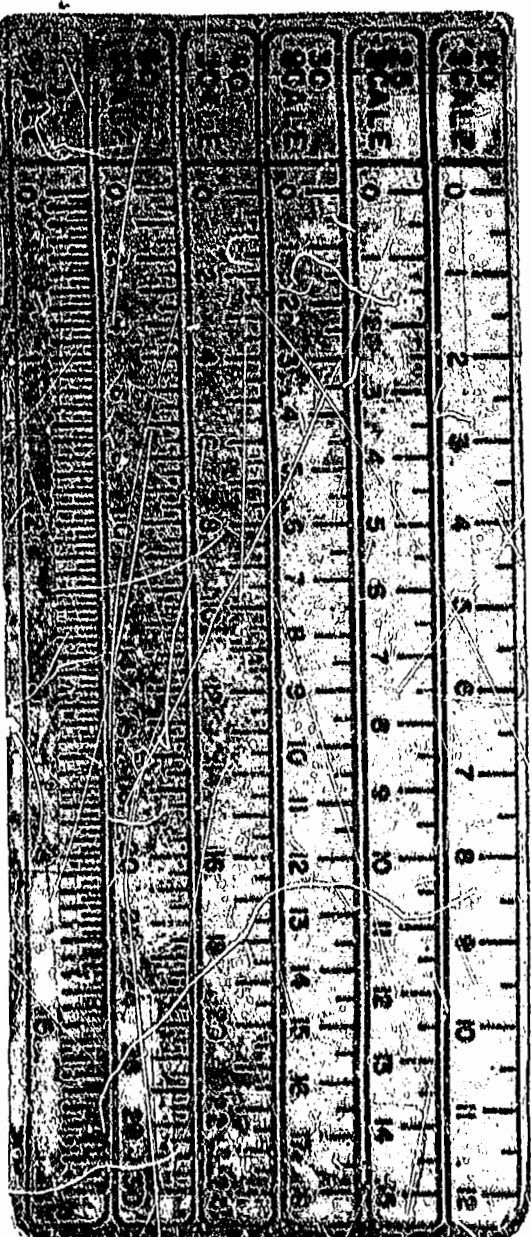
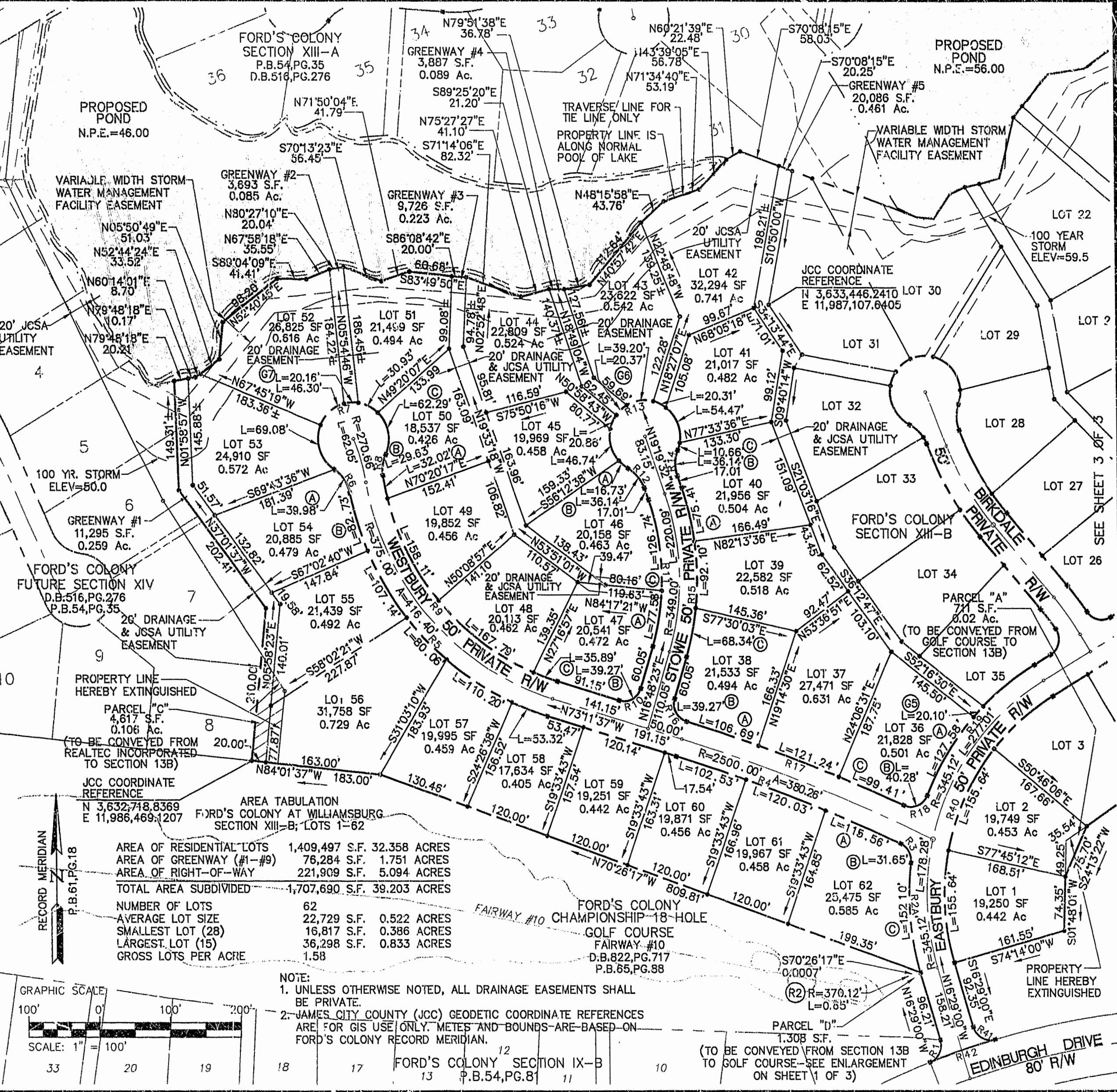


LOT CURVE TABLE						
NUMBER	DELTA	RADIUS	LENGTH	TANGENT	CHORD	CHORD BEARING
1	27°51'26"	320.12	155.64	79.39	154.11	N02°33'16"W
2	27°51'26"	320.12	155.64	79.39	154.11	N25°18'11"E
G5	03°06'39"	370.12	20.10	10.05	20.09	S43°13'45"W
36A	19°44'59"	370.12	127.58	64.43	126.95	S31°47'56"W
36B	92°18'37"	25.00	40.28	26.03	36.06	S68°04'45"W
36C	02°15'20"	2525.00	99.41	49.71	99.40	N66°53'37"W
37	02°45'04"	2525.00	121.24	60.63	121.23	N69°23'49"W
38A	02°25'15"	2525.00	106.69	53.35	106.68	N71°58'59"W
38B	90°00'00"	25.00	39.27	25.00	35.36	N28°11'37"W
38C	10°28'11"	374.00	68.34	34.27	68.25	N11°34'18"E
39	14°06'36"	374.00	92.10	46.29	91.87	N00°43'06"W
40A	11°33'08"	374.00	75.41	37.83	75.28	N13°32'58"W
40B	41°24'35"	50.00	36.14	18.90	35.36	N01°22'45"E
40C	12°13'16"	50.00	10.66	5.35	10.64	N15°58'25"E
41	62°25'09"	50.00	54.47	30.29	51.82	N21°20'47"W
42	23°16'05"	50.00	20.31	10.29	20.17	N64°11'25"W
43	44°55'31"	50.00	39.20	20.67	38.21	N81°42'47"W
G6	23°20'15"	50.00	20.37	10.33	20.23	S47°34'55"W
44	23°54'24"	50.00	20.86	10.59	20.71	S23°57'35"W
45	53°33'55"	50.00	46.74	25.24	45.06	S14°46'35"E
46A	19°10'35"	50.00	16.73	8.45	16.66	S51°08'49"E
46B	41°24'35"	50.00	36.14	18.90	35.36	S40°01'49"E
46C	22°24'48"	324.00	126.74	64.19	125.94	S08°07'08"E
47A	13°43'07"	324.00	77.58	38.98	77.39	S09°56'50"W
47B	90°00'00"	25.00	39.27	25.00	35.36	S61°48'23"W
47C	05°52'33"	350.00	35.89	17.96	35.88	N70°15'20"W
48	27°28'01"	350.00	167.79	85.54	166.18	N53°35'03"W
49	25°53'00"	350.00	158.11	80.43	156.77	N26°54'33"W
50A	05°14'32"	350.00	32.02	16.02	32.01	N11°20'47"W
50B	33°57'15"	50.00	29.63	15.26	29.20	N08°15'07"E
50C	71°22'50"	50.00	62.29	35.92	58.34	N10°27'40"W
51	35°26'55"	50.00	30.93	15.98	30.44	N63°52'33"W
G7	23°06'04"	50.00	20.16	10.22	20.02	S86°50'58"W
52	53°03'15"	50.00	46.30	24.96	44.66	S48°46'18"W
53	79°09'43"	50.00	69.08	41.34	63.72	S17°20'11"E
54A	45°48'44"	50.00	39.98	21.13	38.92	S34°00'40"E
54B	11°51'03"	400.00	82.73	41.51	82.59	S17°01'49"E
55	15°20'49"	400.00	107.14	53.89	106.82	S30°37'45"E
56	11°28'05"	400.00	80.06	40.16	79.93	S44°02'12"E
57	15°47'08"	400.00	110.20	55.45	109.86	S57°39'48"E
58	07°38'15"	400.00	53.32	26.70	53.28	S69°22'29"E
60	02°22'25"	2475.00	102.53	51.27	102.52	S72°00'24"E
61	02°46'43"	2475.00	120.03	60.03	120.02	S69°25'50"E
62A	C2°40'30"	2475.00	115.56	57.79	115.55	S66°42'13"E
62B	72°31'47"	25.00	31.65	18.34	29.58	S29°06'05"E
62C	23°32'45"	370.12	152.10	77.14	151.03	S04°36'33"E

RIGHT-OF-WAY CURVE TABLE						
NUMBER	DELTA	RADIUS	LENGTH	TANGENT	CHORD	CHORD BEARING
R1	85°13'42"	25.00	37.19	23.00	33.85	N26°07'51"E
R2	00°06'04"	370.12	0.65	0.33	0.65	N16°25'59"W
R2A	23°32'45"	370.12	152.10	77.14	151.03	N04°36'33"W
R3	72°31'47"	25.00	31.65	18.34	29.58	N29°06'05"W
R4	07°49'38"	2475.00	338.12	169.32	337.85	N69°16'47"W
R5	62°05'19"	400.00	433.46	240.77	412.56	N42°08'57"W
R6	45°48'44"	50.00	39.98	21.13	38.92	N34°00'40"W
R7	26°20'47"	50.00	228.77	114.38	228.77	N74°09'21"E
R8	33°57'15"	50.00	29.63	15.26	29.20	S08°15'07"W
R9	64°28'06"	350.00	393.81	220.70	373.37	S40°57'34"E
R10	90°00'00"	25.00	39.27	25.00	35.36	N61°48'23"E
R11	36°07'56"	324.00	204.32	105.69	200.95	N01°15'34"W
R12	41°24'35"	50.00	36.14	18.90	35.36	N40°01'49"W
R13	26°24'09"	50.00	229.35	114.67	229.35	N70°40'28"E
R14	41°24'35"	50.00	36.14	18.90	35.36	S01°22'45"W
R15	36°07'56"	374.00	235.85	122.00	231.96	S01°15'34"E
R16	90°00'00"	25.00	39.27	25.00	35.36	S28°11'37"E
R17	07°25'40"	2525.00	327.34	163.90	327.11	S69°28'47"E
R18	92°18'37"	25.00	40.28	26.03	36.06	N68°04'45"E
R19	37°10'48"	370.12	240.17	124.49	235.98	N40°30'51"E
R40	75°35'15"	320.12	422.31	248.25	392.35	S21°18'37"W
R41	89°39'06"	25.00	39.12	24.85	35.23	S61°18'33"E
R42	05°07'02"	1095.55	97.85	48.96	97.81	S71°18'17"W



5248 Olde Towne Road, Suite 1
 Williamsburg, Virginia 23188
 (757) 253-0040
 Fax (757) 220-8994

PLAT OF SUBDIVISION AND BOUNDARY LINE
 ADJUSTMENT
**FORD'S COLONY
 AT WILLIAMSBURG**
 SECTION XIII-B
 LOTS 1-2, AND 36-62

BERKELEY DISTRICT JAMES CITY COUNTY VIRGINIA



Recorded	10 day of Oct 1997
Document #	91012397
Lat Recorded In	U.S. Survey
By	Claudia A. ...
Date	
Revision / Comment / Note	

Designed	SOW/TTB
Drawn	GG/EAW
Scale	1"=100'
Date	7/1/97
Project No.	5652-13B
Drawing No.	2 OF 3