

NOW OR FORMERLY  
BALL METAL BEVERAGE  
CONTAINER CORP.  
(D.B. 773, P.340)  
(P.R. 28, P.59-60)

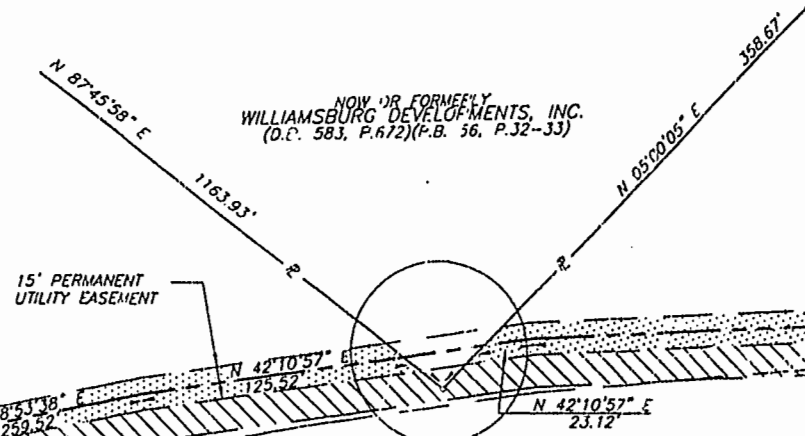
VARIABLE WIDTH  
VEPCO GAS  
LINE EASEMENT  
(D.B. 77, P.47)

NOW OR FORMERLY  
INDUSTRIAL DEVELOPMENT AUTHORITY  
OF JAMES CITY COUNTY, VIRGINIA  
(D.B. 586, P.454)(P.E. 55, P.43)

INSERT "C"  
NOT TO SCALE

SEE  
INSERT "C"

NOW OR FORMERLY  
WILLIAMSBURG DEVELOPMENTS, INC.  
(D.P. 583, P.672)(P.B. 56, P.32-33)



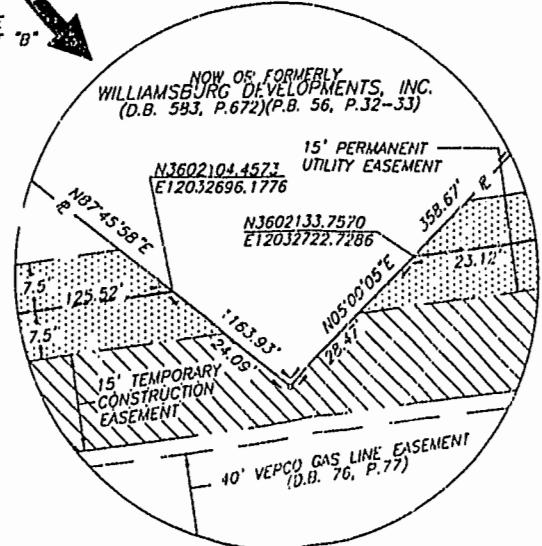
MATCH LINE - SEE SHEET 1

N 350°55'53.1525  
E: 20333227.0074

15' TEMPORARY  
CONSTRUCTION  
EASEMENT

NOW OR FORMERLY  
BASF CORPORATION  
(D.B. 456, P. 624)  
(D.B. 682, P. 229)  
(P.B. 695, P. 318)

NOW OR FORMERLY  
INDUSTRIAL DEVELOPMENT AUTHORITY  
OF JAMES CITY COUNTY, VIRGINIA  
(D.B. 586, P.454)(P.B. 55, P.43)



INSERT "B"  
NOT TO SCALE

11:14 AM  
Recorded 9 day of Oct. 1997  
DOCUMENT # 97-0-16326

Clerk

PLAT RECORDED IN  
P.B. NO. 67, PAGE 58-60

LEGEND

- DENOTES AREA OF TEMPORARY CONSTRUCTION EASEMENT
- DENOTES AREA OF PERMANENT EASEMENT

SEE SHEET 1 OF 2 FOR NOTES AND AREA

SHEET 2 OF 2  
PLAT SHOWING  
EASEMENT TO BE CONVEYED  
FROM  
INDUSTRIAL DEVELOPMENT AUTHORITY  
OF JAMES CITY COUNTY, VIRGINIA  
ROBERTS DISTRICT - JAMES CITY COUNTY, VIRGINIA  
SCALE: 1"=50' MARCH 13, 1997  
ROUSE-SIRINE ASSOCIATES, LTD.  
SURVEYORS AND MAPPING CONSULTANTS  
333 OFFICE SQUARE LANE  
VIRGINIA BEACH, VIRGINIA 23462  
50 0 50 100 FEET  
GRAPHIC SCALE