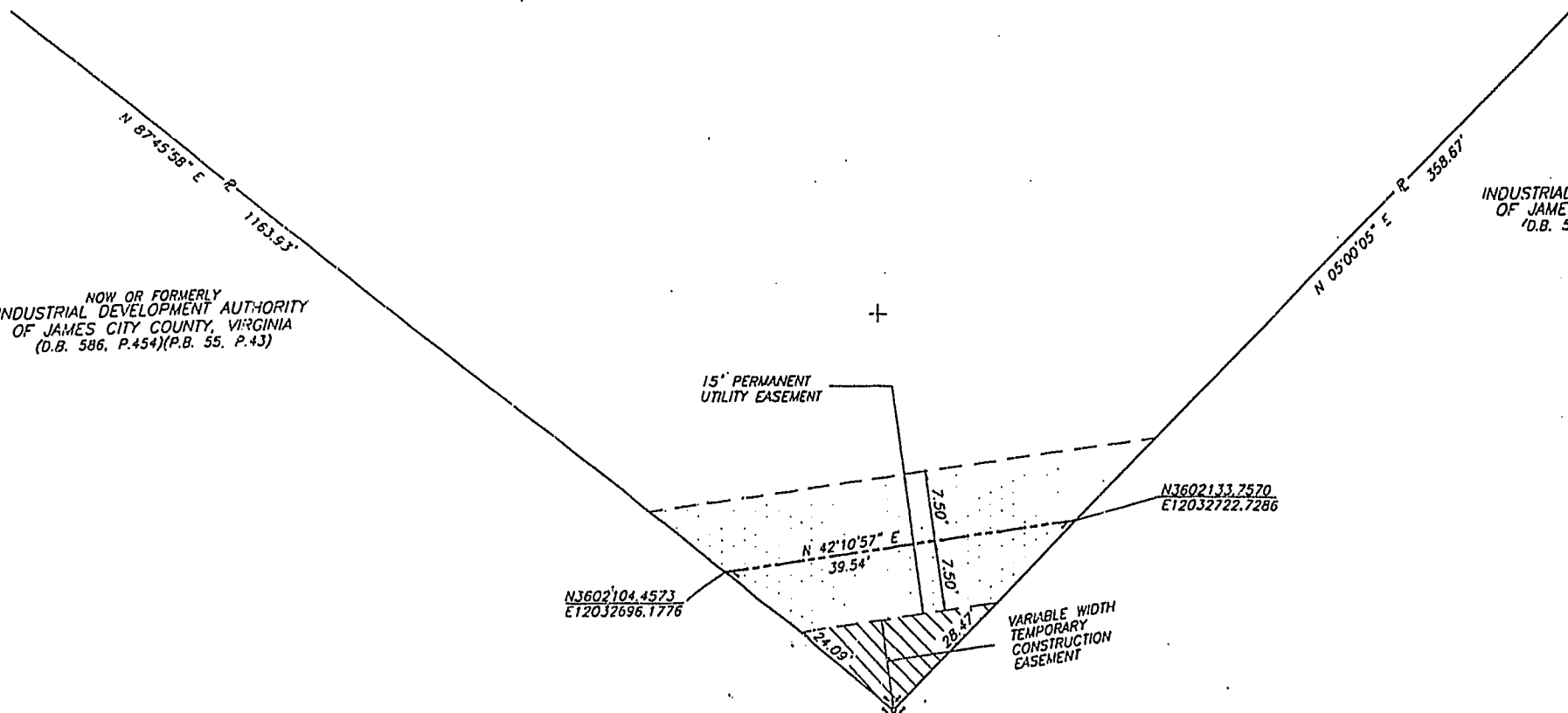


- NOTES:
1. BEARINGS AND COORDINATE VALUES DENOTED HEREON ARE BASED ON THE VIRGINIA COORDINATE SYSTEM OF 1983-SOUTH ZONE AND WERE ESTABLISHED FROM PUBLISHED VALUES FOR JAMES CITY COUNTY PRIMARY SERVICE AREA GEODETIC GROUND CONTROL MONUMENTS J26 AND J26RM3 AZIMUTH.
 2. TAX MAP IDENTIFICATION: SECTION 59-2 D 17
 3. THIS PLAT IS NOT INTENDED TO SHOW ALL EASEMENTS THAT AFFECT THIS PROPERTY.
 4. AREA OF PERMANENT UTILITY EASEMENT = 0.014 ACRE (593 SQ. FT.)
AREA OF TEMPORARY CONSTRUCTION EASEMENT = 0.002 ACRE (108 SQ. FT.)

NOW OR FORMERLY
WILLIAMSBURG DEVELOPMENTS, INC.
(D.B. 583, P.672)(P.B. 56, P.32-33)

NOW OR FORMERLY
INDUSTRIAL DEVELOPMENT AUTHORITY
OF JAMES CITY COUNTY, VIRGINIA
(D.B. 586, P.454)(P.B. 55, P.43)

NOW OR FORMERLY
INDUSTRIAL DEVELOPMENT AUTHORITY
OF JAMES CITY COUNTY, VIRGINIA
(D.B. 586, P.454)(P.B. 55, P.43)



11:14 AM
Recorded 9 day of Oct, 1997
DOCUMENT # 990216326
Wylene S. Wood Clerk



PLAT RECORDED IN
P.B. NO. 67 PAGE 58-60

- DENOTES AREA OF TEMPORARY CONSTRUCTION EASEMENT
- DENOTES AREA OF PERMANENT EASEMENT

PLAT SHOWING
EASEMENT TO BE CONVEYED
FROM
WILLIAMSBURG DEVELOPMENTS, INC.
ROBERTS DISTRICT - JAMES CITY COUNTY, VIRGINIA
SCALE: 1"=10' MARCH 19, 1997
ROUSE-SIRINE ASSOCIATES, LTD.
SURVEYORS AND MAPPING CONSULTANTS
333 OFFICE SQUARE LANE
VIRGINIA BEACH, VIRGINIA 23462
0 10 20 FEET
GRAPHIC SCALE

