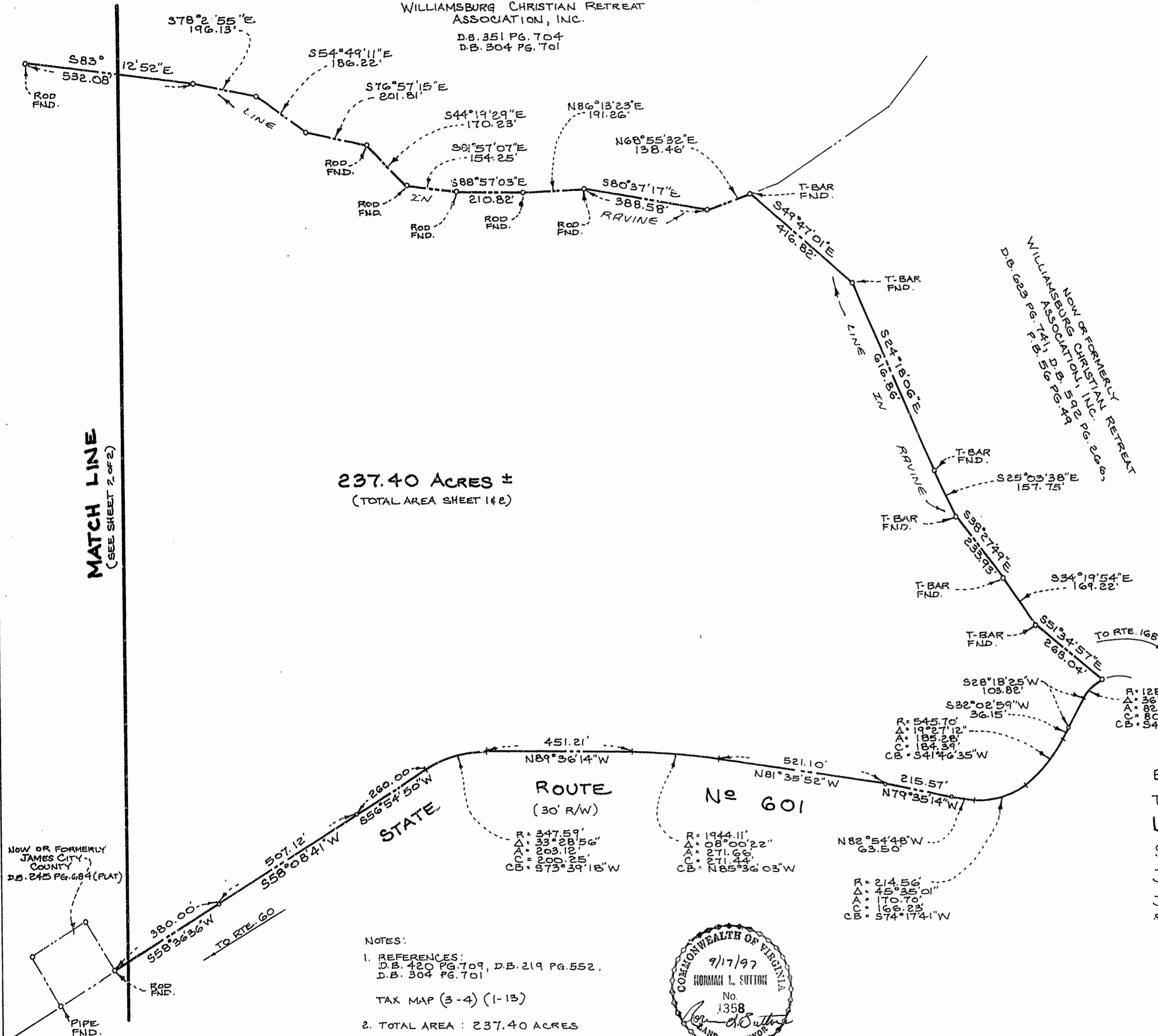


NOW OR FORMERLY
WILLIAMSBURG CHRISTIAN RETREAT
ASSOCIATION, INC.
D.B. 351 PG. 704
D.B. 304 PG. 701

NOW OR FORMERLY
WILLIAMSBURG CHRISTIAN RETREAT
ASSOCIATION, INC.
D.B. 625 PG. 741, D.B. 592 PG. 266,
P.B. 56 PG. 49

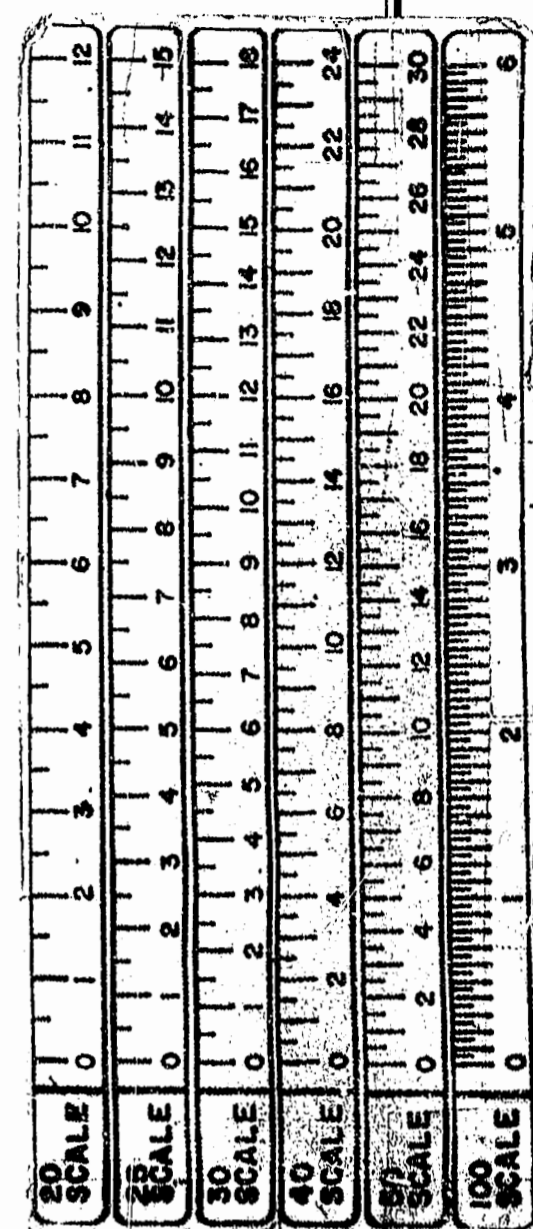


237.40 ACRES ±
(TOTAL AREA SHEET 1 & 2)

MATCH LINE
(SEE SHEET 2 OF 2)

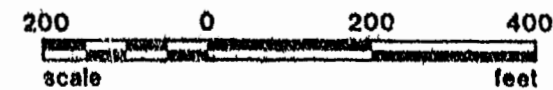
NOW OR FORMERLY
JAMES CITY
COUNTY
D.B. 245 PG. 684 (PLAT)

- NOTES:
- REFERENCES:
D.B. 420 PG. 709, D.B. 219 PG. 552,
D.B. 304 PG. 701
TAX MAP (3-4) (1-13)
 - TOTAL AREA : 237.40 ACRES



RECORDED
9/22/97
3:14pm
Recorded 244 on September 1997
DOCUMENT # 210015579
W. Sutton

BOUNDARY SURVEY OF LAND
TO BE ACQUIRED BY
LHIW-3, LLC
STONEHOUSE DISTRICT
JAMES CITY COUNTY, VIRGINIA
JANUARY 27, 1997 SCALE: 1" = 200'
REVISED SEPT. 17, 1997 TO CHANGE NAME



SUTTON & JAMES, P.C.
Land Surveying & Civil Engineering
P.O. Box 1596
Gloucester, VA 23061
PH: (804) 693-4450