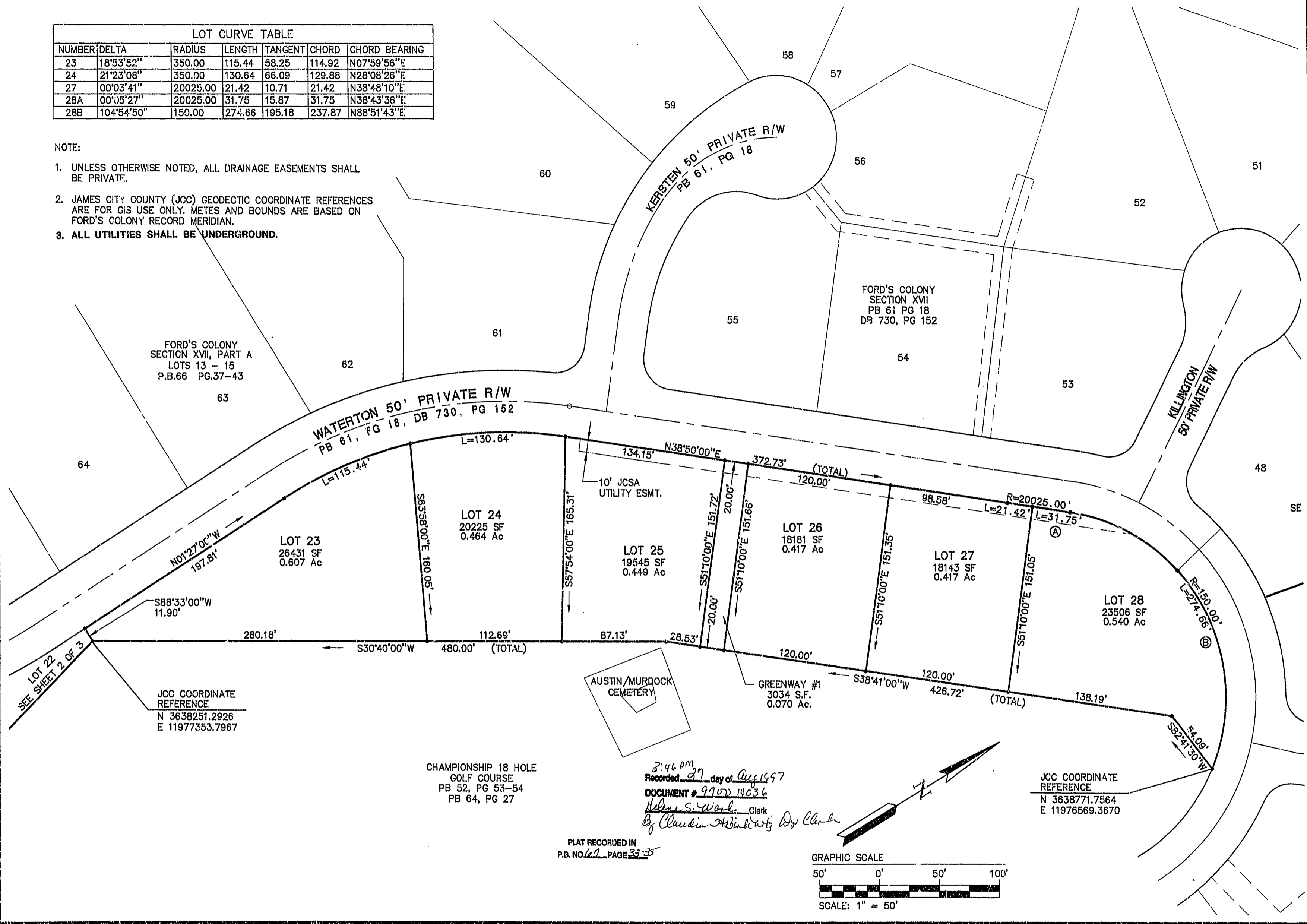


LOT CURVE TABLE						
NUMBER	DELTA	RADIUS	LENGTH	TANGENT	CHORD	CHORD BEARING
23	18°53'52"	350.00	115.44	58.25	114.92	N07°59'56"E
24	21°23'08"	350.00	130.64	66.09	129.88	N28°08'26"E
27	00°03'41"	20025.00	21.42	10.71	21.42	N38°48'10"E
28A	00°05'27"	20025.00	31.75	15.87	31.75	N38°43'36"E
28B	104°54'50"	150.00	274.66	195.18	237.87	N88°51'43"E

NOTE:

- UNLESS OTHERWISE NOTED, ALL DRAINAGE EASEMENTS SHALL BE PRIVATE.
- JAMES CITY COUNTY (JCC) GEODECTIC COORDINATE REFERENCES ARE FOR GIS USE ONLY. METES AND BOUNDS ARE BASED ON FORD'S COLONY RECORD MERIDIAN.
- ALL UTILITIES SHALL BE UNDERGROUND.



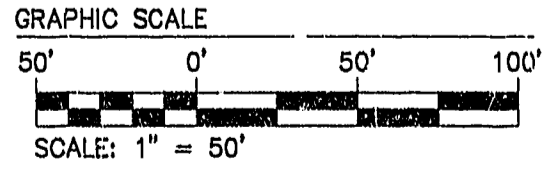
07.17.97-16:12 FC170P02

JCC COORDINATE REFERENCE
N 3638251.2926
E 11977353.7967

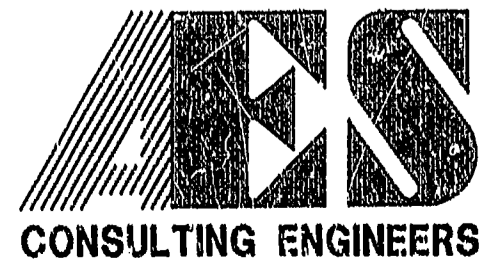
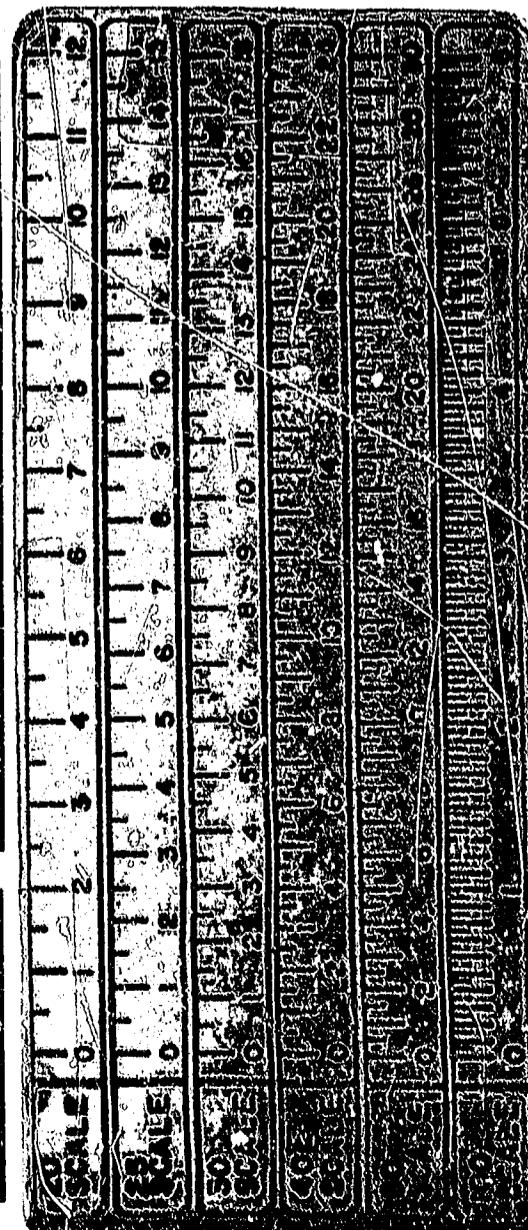
CHAMPIONSHIP 18 HOLE
GOLF COURSE
PB 52, PG 53-54
PB 64, PG 27

3:46 PM
Recorded 27 day of Aug 1997
DOCUMENT # 970014036
Helen S. Ward, Clerk
By Claudia Hinkley D. Clark

PLAT RECORDED IN
P.B. NO. 62 PAGE 33-35



JCC COORDINATE REFERENCE
N 3638771.7564
E 11976569.3670



5248 Olde Towne Road, Suite 1
Williamsburg, Virginia 23188
(804) 253-0040
Fax (804) 220-8994

PLAT OF SUBDIVISION
**FORD'S COLONY
AT WILLIAMSBURG**
SECTION XVII
LOTS 16-20, 22-28
POWHATAN DISTRICT JAMES CITY COUNTY VIRGINIA



No.	DATE	REVISION / COMMENT / NOTE	BY

Designed CAH	Drawn KEG
Scale 1"=50'	Date 7/17/97
Project No. 5652-17	
Drawing No. 3 OF 3	