

SEE SHEET
3 OF 3

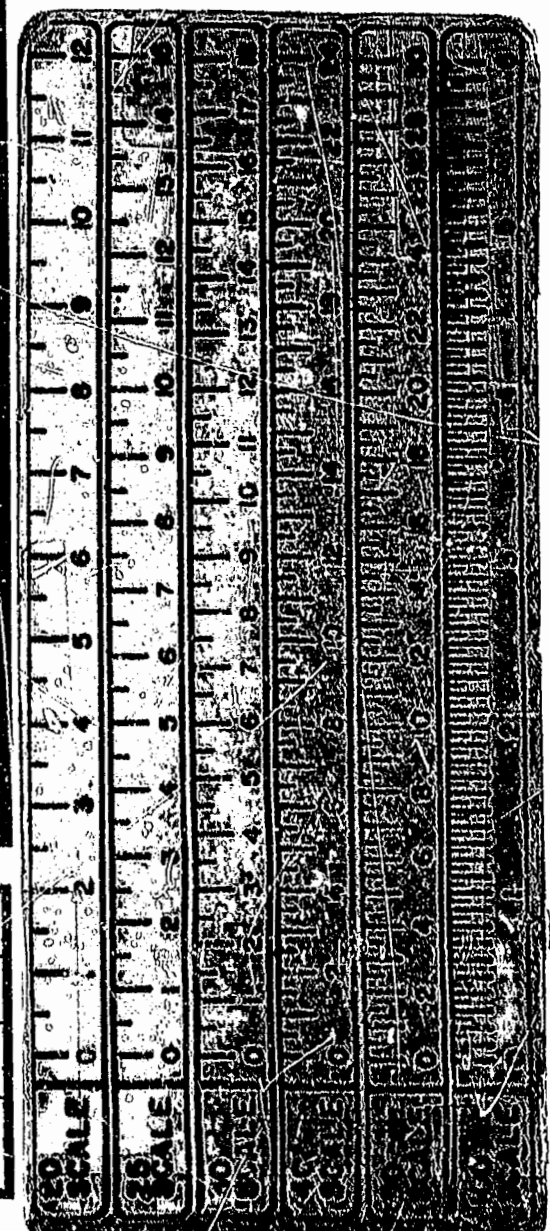
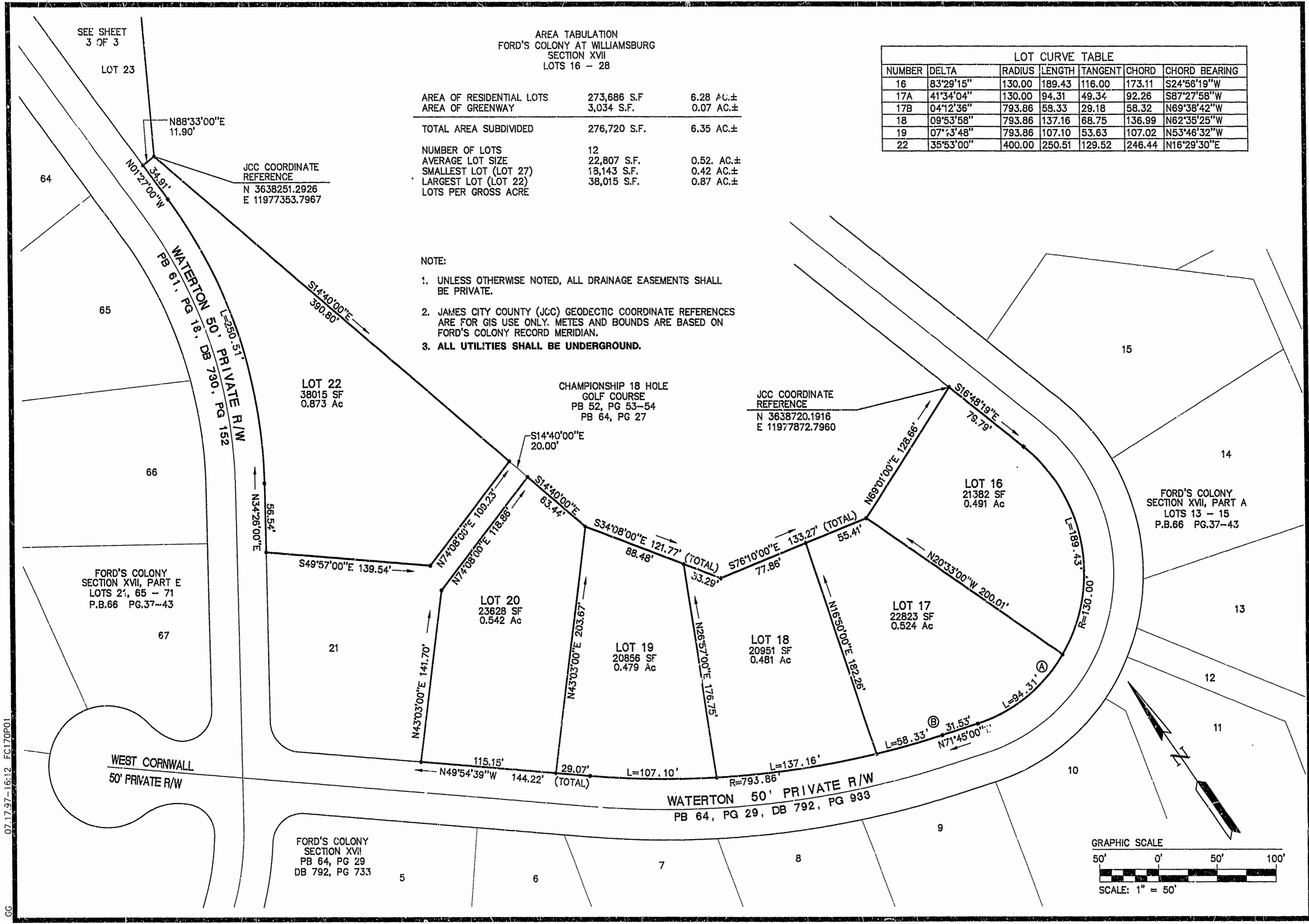
AREA TABULATION
FORD'S COLONY AT WILLIAMSBURG
SECTION XVII
LOTS 16 - 28

AREA OF RESIDENTIAL LOTS	273,686 S.F.	6.28 AC.±
AREA OF GREENWAY	3,034 S.F.	0.07 AC.±
TOTAL AREA SUBDIVIDED	276,720 S.F.	6.35 AC.±
NUMBER OF LOTS	12	
AVERAGE LOT SIZE	22,807 S.F.	0.52 AC.±
SMALLEST LOT (LOT 27)	13,143 S.F.	0.42 AC.±
LARGEST LOT (LOT 22)	38,015 S.F.	0.87 AC.±
LOTS PER GROSS ACRE		

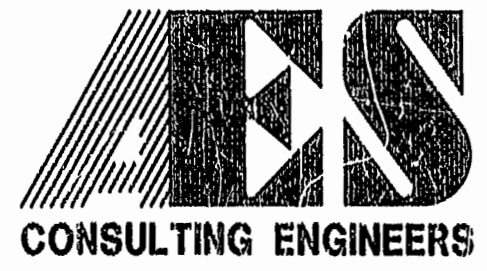
NUMBER	DELTA	RADIUS	LENGTH	TANGENT	CHORD	CHORD BEARING
16	83°29'15"	130.00	189.43	116.00	173.11	S24°56'19"W
17A	41°34'04"	130.00	94.31	49.34	92.26	S87°27'58"W
17B	04°12'36"	793.86	58.33	29.18	58.32	N69°38'42"W
18	09°53'58"	793.86	137.16	68.75	136.99	N62°35'25"W
19	07°3'48"	793.86	107.10	53.63	107.02	N53°46'32"W
22	35°53'00"	400.00	250.51	129.52	246.44	N16°29'30"E

JCC COORDINATE
REFERENCE
N 3638251.2926
E 11977353.7967

- NOTE:
- UNLESS OTHERWISE NOTED, ALL DRAINAGE EASEMENTS SHALL BE PRIVATE.
 - JAMES CITY COUNTY (JCC) GEODETIC COORDINATE REFERENCES ARE FOR GIS USE ONLY. METES AND BOUNDS ARE BASED ON FORD'S COLONY RECORD MERIDIAN.
 - ALL UTILITIES SHALL BE UNDERGROUND.



07.17.97-16.12 FC170P01



5248 Olde Towne Road, Suite 1
Williamsburg, Virginia 23188
(804) 253-0040
Fax (804) 220-8994

PLAT OF SUBDIVISION
**FORD'S COLONY
AT WILLIAMSBURG**
SECTION XVII
LOTS 16-20, 22-28
POWhatan DISTRICT JAMES CITY COUNTY VIRGINIA



PLAT RECORDED IN	24609		
P.B. NO. 67 PAGE 33-35	Recorded 27 day of August 1997		
DOCUMENT #	97014036		
By	G.T. Wilson, Jr. Clerk		
By	Chadwick B. Blythe, Jr. Clerk		
No.	DATE	REVISION / COMMENT / NOTE	BY

Designed CAH	Drawn KEG
Scale 1"=50'	Date 7/17/97
Project No. 5652-17	
Drawing No. 2 OF 3	