

LOT CURVE TABLE

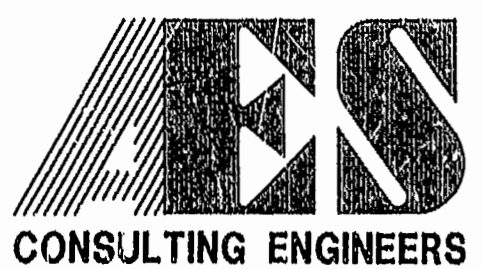
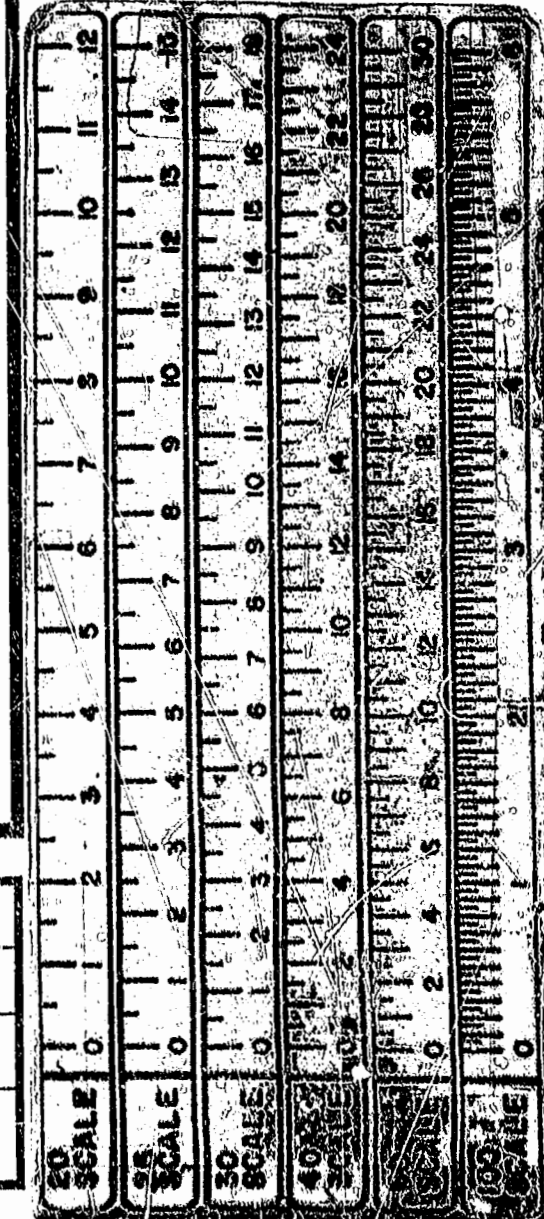
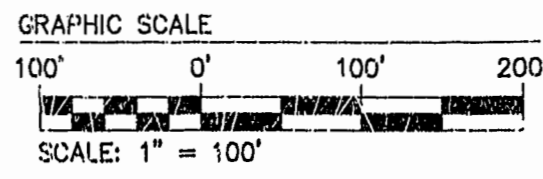
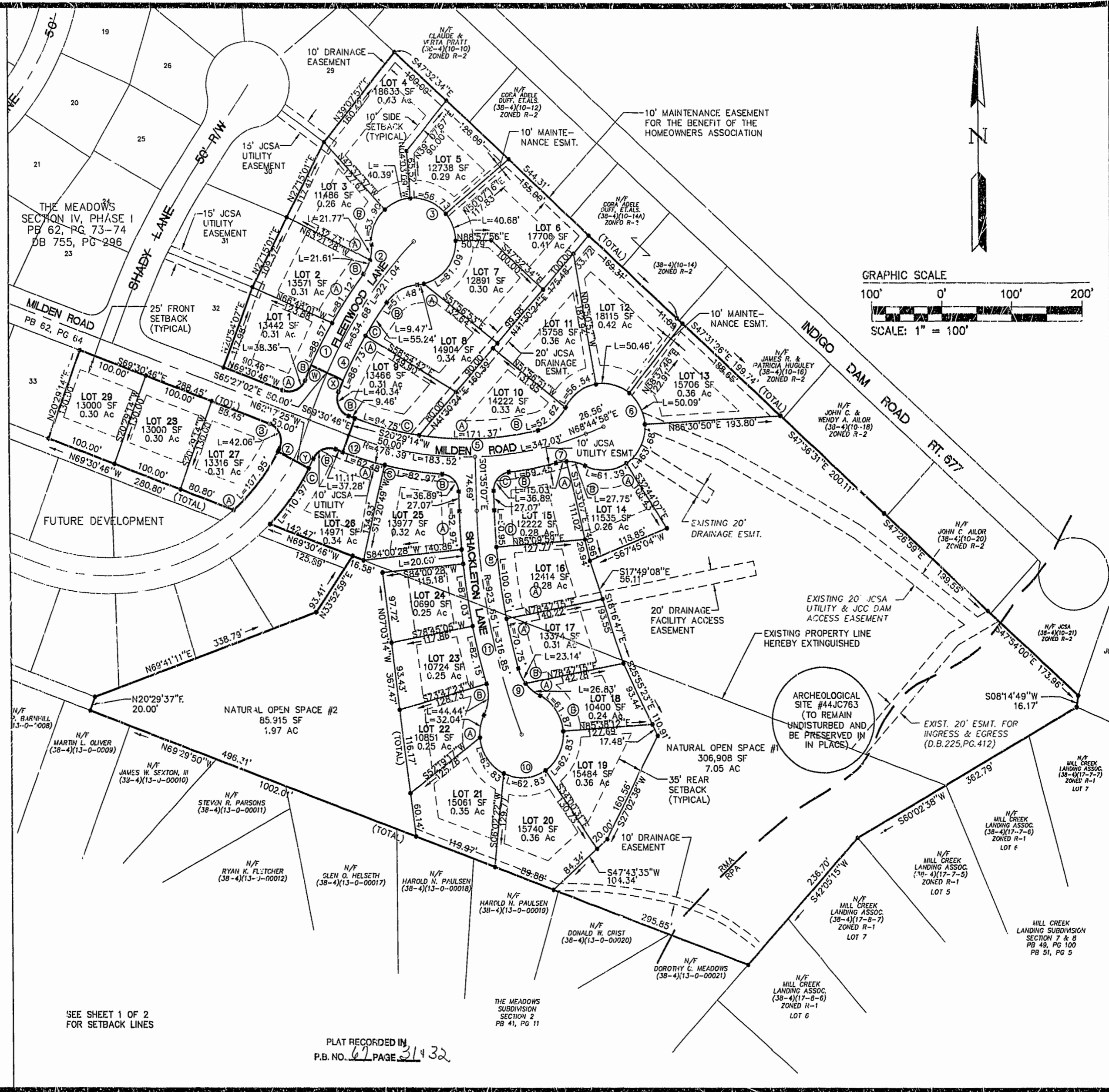
NUMBER	DELTA	RADIUS	LENGTH	TANGENT	CHORD	CHORD BEARING
1A	87°54'27"	25.00	38.36	24.10	34.70	N66°32'01"E
1B	07°41'35"	659.68	88.57	44.35	88.51	N26°25'34"E
2A	07°02'44"	659.68	81.12	40.61	81.07	N33°47'44"E
2B	20°37'54"	60.00	21.61	10.92	21.49	N27°00'09"E
3A	20°47'20"	60.00	21.77	11.01	21.65	N06°17'32"E
3B	51°28'32"	60.00	53.90	28.92	52.11	N21°38'08"E
4	38°34'27"	60.00	40.39	21.00	39.64	N66°39'37"E
5	54°10'26"	60.00	56.73	30.69	54.64	S66°57'57"E
6	38°50'40"	60.00	40.68	21.16	39.90	S20°27'25"E
7	77°26'00"	60.00	81.09	48.10	75.06	S37°40'56"W
8A	09°02'29"	60.00	9.47	4.74	9.46	S80°55'12"W
8B	49°09'40"	60.00	51.48	27.45	49.92	S60°51'37"W
8C	05°11'30"	609.68	55.24	27.64	55.23	S33°41'03"W
9A	08°09'02"	609.68	86.73	43.44	86.66	S27°00'47"W
9B	92°27'02"	25.00	40.34	26.09	36.10	S23°17'14"E
9C	12°01'37"	451.39	94.75	47.55	94.58	S75°31'35"E
10A	21°45'09"	451.39	171.37	86.73	170.34	N87°35'03"E
10B	50°14'55"	60.00	52.62	28.14	50.95	N51°35'01"E
11	53°59'14"	60.00	56.54	30.56	54.47	N53°27'10"E
12	48°10'59"	60.00	50.46	26.83	48.98	S75°27'44"E
13	47°49'39"	60.00	50.08	26.61	48.64	S27°27'24"E
O.S.1	60°48'28"	60.00	63.68	35.21	60.73	S26°51'39"W
14A	58°37'12"	60.00	61.39	33.68	58.74	N86°34'29"E
14B	26°29'57"	60.00	27.75	14.13	27.50	N77°21'53"W
15A	14°21'26"	60.00	15.03	7.56	15.00	S82°12'26"W
15B	07°56'09"	501.39	69.45	34.78	69.39	S78°59'47"W
15C	84°32'59"	25.00	36.89	22.73	33.63	S40°41'22"W
15D	03°14'54"	898.65	50.95	25.48	50.94	S03°12'34"E
16	06°22'45"	898.65	100.05	50.08	100.00	S08°01'23"E
17A	04°30'40"	898.65	70.75	35.40	70.74	S13°28'06"E
17B	22°06'01"	60.00	23.14	11.72	23.00	S26°46'26"E
18A	5°37'31"	60.00	26.83	13.65	26.61	S50°35'12"E
18B	59°05'09"	60.00	61.87	34.01	59.17	S33°54'22"E
19	60°00'00"	60.00	62.83	34.64	60.00	S25°38'12"W
20	60°00'00"	60.00	62.83	34.64	60.00	S08°01'23"E
21	60°00'00"	60.00	62.83	34.64	60.00	N34°21'48"W
22A	30°35'38"	60.00	32.04	16.41	31.65	N10°56'01"E
22B	42°26'28"	60.00	44.44	23.30	43.43	N05°00'36"E
23	04°57'42"	948.65	82.15	41.10	82.13	N13°43'46"W
24	05°15'23"	948.65	87.03	43.55	87.00	N08°37'14"W
O.S.2	01°12'29"	948.65	20.00	10.00	20.00	S05°23'18"E
25A	03°11'56"	948.65	52.97	26.49	52.96	N03°11'05"W
25B	84°32'53"	25.00	36.89	22.73	33.63	N43°51'36"W
25C	09°28'54"	501.39	82.97	41.58	82.88	N81°23'38"W
26A	07°08'25"	501.39	62.48	31.28	62.44	N73°04'59"W
26B	85°26'28"	25.00	37.28	23.09	33.92	S67°46'00"W
26C	19°33'46"	325.00	110.97	56.03	110.43	N34°49'39"E
27A	22°29'29"	275.00	107.95	54.65	107.26	N38°07'18"E
27B	96°23'20"	25.00	42.06	27.96	37.27	N21°19'06"W

RIGHT-OF-WAY CURVE TABLE

NUMBER	DELTA	RADIUS	LENGTH	TANGENT	CHORD	CHORD BEARING
1	12°45'07"	659.68	147.01	73.81	146.71	N30°56'02"E
2	41°25'21"	60.00	43.38	22.68	42.44	N16°36'28"E
3	269°32'34"	60.00	282.27	-----	85.19	S49°19'51"E
4	11°43'50"	609.68	124.82	62.63	124.61	N30°24'53"E
5	33°46'46"	451.39	266.12	137.05	262.29	N86°24'09"W
6	269°25'32"	60.00	282.14	-----	85.23	S18°49'41"E
7	40°51'23"	60.00	42.78	22.35	41.88	S84°32'36"E
8	14°08'19"	898.65	221.76	111.44	221.19	S08°39'16"E
9	47°43'31"	60.00	49.98	26.54	48.55	S39°35'11"W
10	269°40'47"	60.00	282.41	-----	85.09	S71°23'27"W
11	14°37'31"	948.65	242.15	121.74	241.49	N08°53'52"W
12	16°37'19"	501.39	145.46	73.24	144.95	N77°49'25"W

EXISTING RIGHT-OF-WAY CURVE TABLE

NUMBER	DELTA	RADIUS	LENGTH	TANGENT	CHORD	CHORD BEARING
W	01°58'11"	659.68	22.68	11.34	22.68	N23°33'53"E
X	01°36'42"	609.68	17.15	8.58	17.15	S23°44'37"W
Y	02°39'48"	325.00	15.11	7.56	15.11	S26°22'40"W
Z	00°50'00"	275.00	4.00	2.00	4.00	N27°17'34"E



5248 Olde Towne Road, Suite 1
Williamsburg, Virginia 23188
(757) 253-0040
Fax (757) 220-8994

PLAT OF SUBDIVISION
THE MEADOWS
SECTION IV, PHASE II

OWNER/DEVELOPER: MEADOWS II LIMITED PARTNERSHIP
BERKELEY DISTRICT JAMES CITY COUNTY VIRGINIA



No.	DATE	REVISION / COMMENT / NOTE	BY

Designed SOW/DPW	KEG
Drawn	KEG
Scale	1"=100'
Date	7/25/97
Project No.	7820-2
Drawing No.	2 OF 2